

Dust in the Wind

LAKE COUNTRY PASTEL SOCIETY

From our President...

Board of Directors



TRY IT FOR TWENTY

If you are like me, I have difficulty getting started on my artwork. I'll head to my home studio, which is in a separate room in my home, with good intentions to work on a new piece or finish a piece. But I find myself getting distracted with other tasks: organizing supplies, checking out upcoming deadlines, making or checking lists, inventorying frames, and fretting over the various unfinished artworks that line the wall and counter. I find it difficult to get started with putting pastel to paper. That feeling of what exactly the piece needs and how to accomplish my intentions paralyzes me. I've ruined perfectly good artworks

many times by finishing them off rather than letting the art shine through. My tendency towards micro managing the details seems to shine through when I'm in the studio. My hesitancy results in spending time on distracting tasks rather than creating art. Particularly when my time is limited, the other tasks end up becoming my priority by default.

My good friend, Michelle Wegler (our publicity chair), has given me very good advice on how to get started. Rather than over thinking, she suggests that I paint first, even if only for twenty minutes. Hey, I can paint for twenty minutes – surely I can't over work a piece in that amount of time. She even suggests that I use a timer to limit the time to just twenty minutes. In my mind, all the other necessary tasks can wait for this short period of time. By the end of twenty minutes, the creative juices flow and the creative part of the brain takes over. Then I take a short break – this time is used to evaluate where the piece is headed and how I plan to get there. By this time, I'm no longer thinking about those other tasks in the studio and spend time creating art rather than organizing around the artwork. This method also works when only a small window of time is available. Perhaps you can try this method to help get your creative juices flowing. It works for me when I actually discipline myself to do it.

The LCPS board has two announcements. Our website will be remodeled and will include interactive features, as was discussed briefly at the last members' meeting. A more detailed description of the website will be available at a later date.

In addition, the LCPS will award two scholarships of \$250 each to LCPS members who have not previously attended an LCPS sponsored workshop. The award will be used to offset tuition to attend the Color of Light I workshop with Sally Strand held May 8-11, 2012. We are trying to encourage LCPS members, who have been unable to attend in the past, to attend our workshops. Please see the article in this newsletter for more details.

Happy Holidays!

Cheryl LeClair-Sommer

LCPS President

Cheryl LeClair-Sommer,
 President, 651-481-9290

Kathy Kobs, Secretary,
 651-633-4182

Rene Ellis, Treasurer,
 651-690-5671

Bonnie Featherstone,
 Program Chair,
 612-823-8898

Kathy Fleming, Exhibits
 Chair, 612-839-4439

Lisa Stauffer, Workshop
 Chair, 218-728-6046

Michelle Wegler, Public
 Relations, 218-343-6887

Karen Stombaugh,
 Membership Chair,
 952-473-2344

Barb Björnson, Historian,
 651-636-1427

Elizabeth Strootman,
 Newsletter Editor,
 763-427-0860



Member Awards



Fred Somers'...

"Prairie Rainbows", a 10 x 20" oil, was awarded first prize in The Artist's Magazine 2011 Annual competition. The winners are featured in the latest issue of the magazine.



"New Beginnings II", an 18 x 24" pastel won the Pastel Journal Award and a purchase award in "Pastels Only", the annual exhibit of The Pastel Society of America.

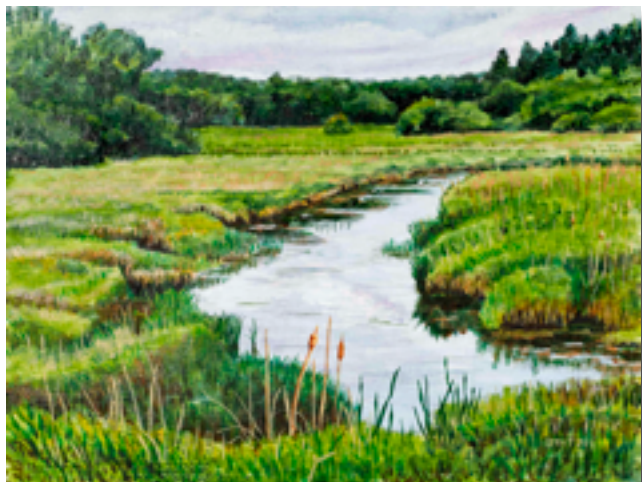


Judy Lieber's...

"Scene on the Beach #1", a watercolor & pastel on Wallis paper, won an award of excellence in the MN Artists Association exhibit at Colonial Church. This is not the one that was in our last show. That was #2.

She also had 3 paintings accepted into the Extremely MN exhibit held at the Robbin Gallery. One was a pastel entitled, "Breakfast at Curran s."

Member Awards



David Bratzel's...

"Itasca Creek Bend" received a Special Recognition Award in the Light, Space & Time, on line gallery's November show: "Countryside Art Competition."

Upcoming Classes Taught by LCPS Members

Fred Somers

Six Tuesday Evenings:
January 10-February 21
(No class on Valentine's Day)

Email:

studio@fredericksomers.com
for more information. We
would like to arrange
carpools from the cities.

Judy Lieber

Will be offering:
a watercolor & pastel
class entitled, "Pastels:
A 3-Step Process" at the
Edina Art Center
beginning Jan. 24th.
and another class...
"QuickDraw: Faces"
...If you like to laugh,
this one is the class for
you!

Member Exhibitions

Bonnie Featherstone ...

The Metroscapes Watercolor Consortium

A Member's Exhibition
Featuring: *Bonnie Dyer Featherstone*

December 11 to January 29, 2012



Opening Reception

**Sunday, December 11
6:00 - 8:00 pm
Recent paintings and
refreshments**

at the

**Patisserie Margo
284 Water Street
Excelsior, MN
(952)746-2232**

Lisa Stauffer...



Lisa Stauffer will have her show "Seven by Seven" up at The MacRostie Art Center for the month of January, 2012. The opening is Friday, January 6, 4-8 p.m. at the MacRostie in downtown Grand Rapids, MN. If you are up north for some ice fishing or skiing, do drop in to visit!

January Program

Is It Done Yet?...Is This Worthy of Entering into a Competitive Show?

Contemplation...Completion... and Competitions-

Developing Our Own Inner Critical Skills

.....

Please join us as Lisa Stauffer, our own LCPS member and a nationally recognized pastel artist, presents this program. Using examples of her own paintings, Lisa will lead us through the process of critiquing your own work. She will share insights she obtained from discussions of this topic with Elizabeth Mowry and Richard McKinley.

This is a unique opportunity for us to develop the ability to judge our own work.



Lisa Stauffer received her Master's in Design (University Of Minnesota, Minneapolis) and studied Illustration at Parson's School of Design (NYC). She continues her education by taking workshops from nationally recognized painters whose work inspire her. She has worked and taught in a wide variety of media, now primarily painting in soft pastel with a special focus on painting en plein air to indulge her fascination with light and color in Minnesota's beautiful north shore landscape.

Lisa was awarded Master Circle status by the International Association Of Pastel Societies in 2009. She was awarded the H.K. Holbein Award at the Pastel Society Of America Show at the National Arts Club in New York City, September 2010, and her painting was one of twenty chosen by the Director of the Butler Institute Of American Art, Youngstown, Ohio, to travel to the exhibit "American Pastels-2010" on display December 2010-January 2011 at the museum. This summer she won the "Paint The Town" award at the Red Wing plein air competition in June.

Elizabeth Mowry chose her painting, "October's Arrival" as Best In Show at the LCPS show this August, and she won "People's Choice" at the Grand Marais Plein Air competition this August.

FUTURE PROGRAMS

*March Meeting Program - A Member Presenter Demo

*May Meeting Program - Sally Strand, LCPS Workshop Presenter

Bonnie Featherstone, Program Chair

Art enables us to find ourselves and lose ourselves
at the same time. Thomas Merton

Greetings from Sally Strand, our spring workshop instructor ...



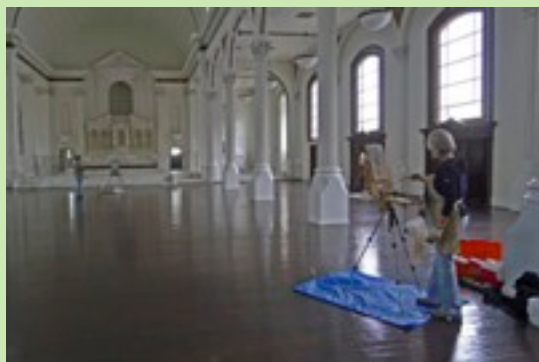
Bedside, AM
18 x 27", pastel

Happy Holidays to Everyone!

I'm pleased to announce that my painting "Bedside, AM" has been chosen by the Butler Institute of American Art in Ohio for inclusion in the Legacy Collection -- part of the museum's permanent collection.

The Pastel Society of America Legacy Collection will be comprised of works by PSA "Hall of Fame" artists. I was very honored to be inducted in 2007.

This fall my paintings were exhibited in New York, at PSA's 39th Annual Open Exhibition, National Arts Club and in Denver at the Abend Gallery Pastel Invitational.



Recently, I was oil painting in this fascinating, historic, and empty cathedral, St. Vibiana, downtown Los Angeles. This was part of a class I have been taking through the Laguna College of Art and Design, MFA program.

UPCOMING EVENT

Check out my work at this Denver holiday exhibit:
21st Annual Miniatures Show
December 2-January 7, 2012
Abend Gallery, Denver, Colorado

*Wishing everyone a safe and happy holiday season
and the joy of art!*

Sally

www.sallystrand.com
info@sallystrand.com
Studio: 949.493.6892

"I sincerely can't remember a more powerful learning experience in my 30 years of painting. You have inspired me and lit a fire."

—Janeen Schissler, student

Check the website for updates:
[Workshop description/schedule](#)

For more information:
www.sallystrand.com
[News and events](#)

Read [Sally Strand, A New Day, A New Vision](#) in the *Pastel Journal*.

2012 Workshop Report

Sally Strand Workshop

Tuesday, May 8 through Friday, May 11, 2012

Sponsored by the Lake Country Pastel Society

Held at the New Brighton Family Center

400 Tenth Street N.W., New Brighton, MN

55112



by Sally Strand

THE COLOR OF LIGHT

The principles taught in this class are basic to all mediums. Color and light are the focus of the workshop, along with essential elements of strong composition. Students explore color by working from costumed models and/or still life. Optical mixing of layered color, as well as the analysis of the effect of light and substructure of values and temperature are stressed. Each student receives individual attention and critiques. Demonstrations, lectures and a slide show are designed to give students tools to achieve intensely beautiful color.

- Pastel primarily, all mediums welcome
- Beginner to professional
- Instructor demonstrations in pastel
- Individual instruction, critiques

Tuition is \$545 for the 4-day course. Applications must be submitted with a deposit of \$150. Balance must be received by March 25, 2012. Prompt registration preferred to guarantee your space in the workshop (participants limited to 18) and confirm our commitment to this artist. For cancellations on or before March 25, 2012, a \$100 cancellation fee will be assessed. Cancellation after March 25, 2012 will result in forfeiture of the entire fee unless the space can be filled with a student from the waiting list, in which case a \$150 cancellation fee will be assessed.

Registrants will be notified of their acceptance and details upon receipt of the registration form and deposit. For questions, contact Lisa Stauffer at lksart@aol.com or call 218-728-6046.

INITIAL REGISTRATION FORM - Sally Strand Workshop

Tuesday May 8-Friday, May 11, 2012

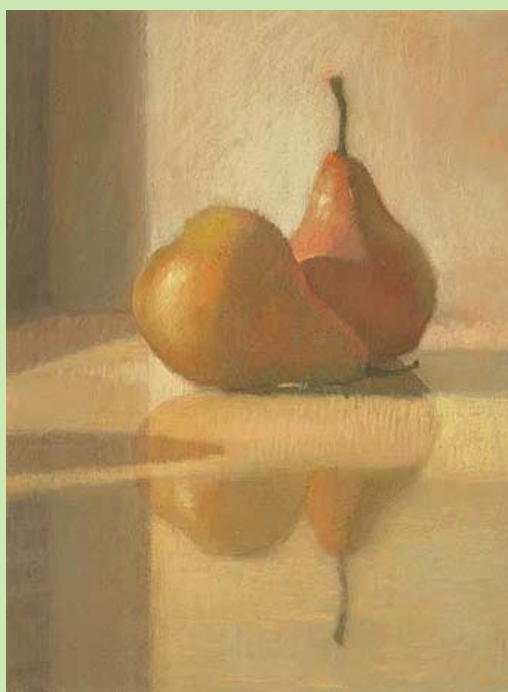
Name: _____

Address: _____

Phone: _____ E-mail _____

Amount enclosed: _____ \$150 Down Payment OR _____ \$545 Full Payment. Balance Due 3-25-2012

Mail check payable to LCPS to: Lisa Stauffer, 1831 E 3rd St., #5, Duluth, MN, 55812.



Sally Strand Workshop

Monday, May 14 through Wednesday, May 16, 2012

Sponsored by the Lake Country Pastel Society

Held at the New Brighton Family Center

400 Tenth Street N.W., New Brighton, MN 55112

THE COLOR OF LIGHT 2 - THE NEXT LEVEL

A continuation of The Color of Light, this new class will progress to a higher level of painting, beginning with an in- depth look at creative compositional devices and how they apply to emotional content. We will focus on the later stages of painting, learning to harmonize color masses while developing the ability to really see and mix color, especially those that are nuanced and subtle. Finally, we will explore the finishing touches that turn paintings into personal statements.

Students will paint from costumed models and still life. Demonstrations, lectures and a slide show are designed to give students tools to achieve intensely beautiful color and light. Previous workshop or intermediate / advanced level recommended.

Tuition is \$400 for the 3-day course. Applications must be submitted with a deposit of \$150. Balance must be received by March 25, 2012. Prompt registration preferred to guarantee your space in the workshop (participants limited to 18) and confirm our commitment to this artist. For cancellations on or before March 25, 2012, a \$100 cancellation fee will be assessed. Cancellation after March 25, 2012 will result in forfeiture of the entire fee unless the space can be filled with a student from the waiting list, in which case a \$150 cancellation fee will be assessed.

Registrants will be notified of their acceptance and details upon receipt of the registration form and deposit. For questions, contact Lisa Stauffer at lksart@aol.com or call 218-728-6046.

INITIAL REGISTRATION FORM - Sally Strand Workshop

Monday May 14-Wednesday, May 16, 2012 Name: _____

Address: _____ Phone: _____

E-mail _____

Amount enclosed: _____ \$150 Down Payment OR _____ \$400 Full Payment. Balance Due 3-25-2012 Mail check payable to LCPS to: Lisa Stauffer, 1831 E 3rd St., #5, Duluth, MN, 55812.

APPLICATION FOR A (PARTIAL) TUITION WAIVER SCHOLARSHIP
TO ATTEND THE LCPS WORKSHOP WITH SALLY STRAND MAY 8 - May 11, 2012

Two scholarships valued at \$250 each are available to help defray tuition to attend the LCPS sponsored workshop with Sally Strand (The Color of Light) to be held from May 8 through May 11, 2012.

The cost of the workshop is \$545 – the recipient is responsible for payment of the balance of tuition of \$295. If awarded the scholarship, the recipient will owe the deposit of \$150 by February 28, 2012 and the remainder of the tuition (\$145) is due by March 25, 2012. No cash value. Recipient must attend the stated workshop – not transferable. Recipients must be current LCPS members who have never taken a prior LCPS sponsored workshop.

Cancellation provisions of the workshop apply to the scholarship recipient (for cancellations on or before March 25, 2012, a \$100 cancellation fee will be assessed – cancellation after March 25, 2012 will result in forfeiture of the entire fee unless the space can be filled with a student from the waiting list, in which case a \$150 cancellation fee will be assessed.) If the recipient decides not to attend the workshop, no refund will be made of the \$250 scholarship tuition waiver and any cancellation fees will be deducted from the recipient's tuition payments.

Sally Strand is a wonderful instructor for beginner to advanced students. For more information on the workshop, please see the workshop description in this newsletter.

Applications must be RECEIVED by February 11, 2012. Should more than two people apply for the scholarships, two recipients will be drawn at random at the LCPS members' meeting held on February 14, 2012. To apply, please fill out the form below:

Name _____ Phone _____

Address _____

City _____ State _____ Zip _____

Email address _____

By signing this form, I agree that I am a 2012 member of LCPS, have not previously attended a LCPS sponsored workshop, and agree to abide by the above terms.

Signature

Mail to: Cheryl LeClair-Sommer, 285 Twin Lake Trail, Little Canada, MN 55127. If you have questions, please email Cheryl at tcaw1@msn.com or call 651-481-9290.

LCPS UPCOMING EXHIBITS

The dates for the upcoming exhibit have been changed to July 25 - August 23, 2012 to be held at the Elk River Arts Alliance Gallery. We are currently seeking a judge for this show – if you have a suggestion for a judge, please contact Kathy Fleming or Cheryl LeClair-Sommer.

Another exhibit is scheduled through the Phipps Center for the Arts Healing Arts Program to be held at Hudson Hospital from Oct. 17, 2012 - Jan. 13, 2013.

More details about these exhibits will be available in future newsletters.



...LEND A HAND

VOLUNTEERS NEEDED

Volunteers are needed for the following positions:

Exhibit Committee

(one or two people preferred - ask a friend and volunteer together)

Secretary

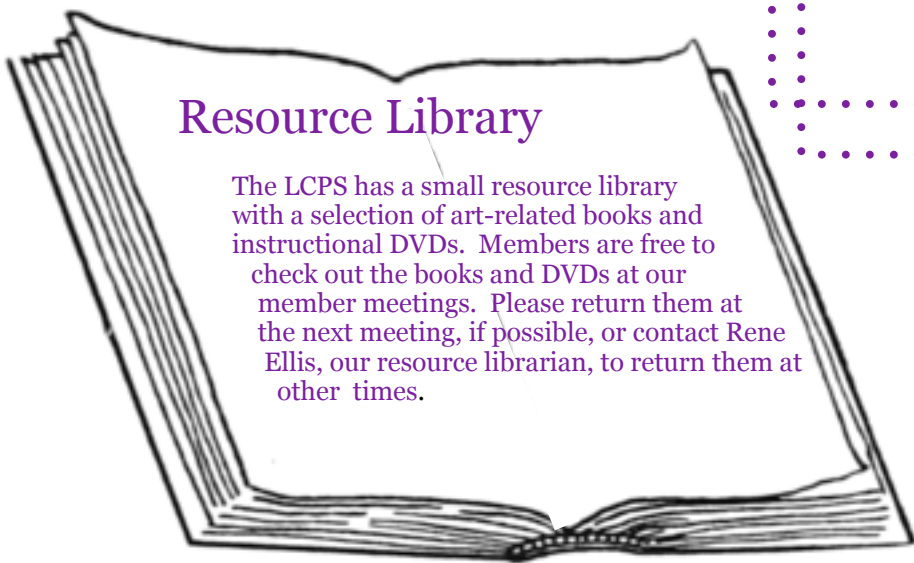
(Kathy Kobs is currently in this position temporarily)

Program Committee

LCPS depends upon our volunteers to run our wonderful organization. Please volunteer your time to help us out - you will make longstanding friendships and help us run our great society!

Resource Library

The LCPS has a small resource library with a selection of art-related books and instructional DVDs. Members are free to check out the books and DVDs at our member meetings. Please return them at the next meeting, if possible, or contact Rene Ellis, our resource librarian, to return them at other times.



What's happening out there?

Send me your Stuff! Paintings, Drawings, Photos, Quotes, Tips, Articles....

Preferred method is email:

elizabeth.strootman@hotmail.com

or

Mail to:

LCPS Newsletter

% Elizabeth Strootman

4907 Marystone Blvd NW

Andover, MN 55304

LAKE COUNTRY PASTEL SOCIETY
Membership Application 2012

Name: _____ Phone: _____

Email Address: _____ My Website: _____

Address: _____ City _____ State _____ Zip _____

I would like to see the LCPS provide the following programs or events: _____

I would like to volunteer to assist with the following:

☐ Exhibit Committee (assist with creating the prospectus, labels, accepting paintings at exhibits, bringing food or beverages, assist to find prospective exhibit venues)☐ Newsletter (contributing articles, editing/correcting)☐ Program Committee at LCPS Meetings (assist to arrange for speakers, coordinate audiovisuals, submit newsletter articles on content)☐ Website (assist to coordinate the LCPS website, work with the Webmaster)☐ Workshops (assist to plan & coordinate with workshop chair, assist to coordinate facility and member questions during workshops)☐ Ad Hoc Board Member☐ Special Programs (organize and coordinate special programs such as short workshops or events, museum tours, etc.)☐ Other: I'm interested in helping – assign me to a task.☐ Other: I have a skill in _____ and I'm willing to share.Please initial below **only** if you opt out:☐ I opt out of granting LCPS permission to use my name, photographs of my artwork, and website information on the LCPS website.☐ I opt out of allowing the LCPS to provide my email address and mailing address to vendors who provide art supplies to the LCPS for prizes and awards.

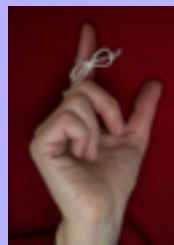
Dues: \$30, check payable to Lake Country Pastel Society.

Mail to: Karen Stombaugh

3565 Deephaven Ave.

Deephaven, Minnesota 55391

Questions, call Karen at: 952-473-2344

or email: k.stombaugh@mchsi.com.

*Just a reminder...
If you haven't
already, please
pay your dues as
soon as possible.*

*The membership list will be
finalized by February 2012.
Thank You!
Karen Stombaugh,
Membership Chair*

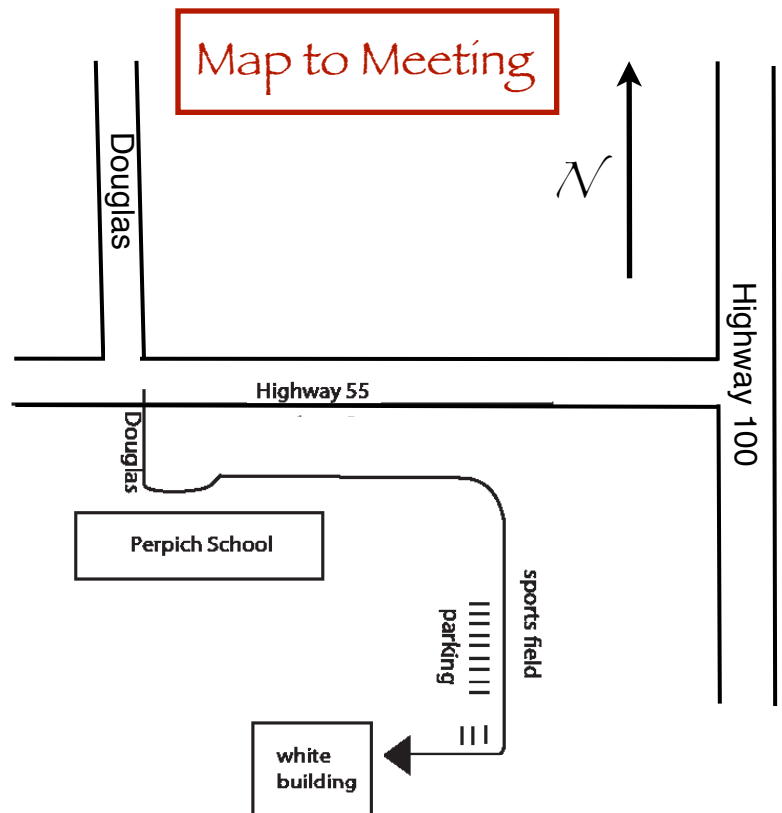
LCPS 2012 Calendar

TIMES: 6:30 if you want to socialize
7:00 meeting begins

JAN 10	LCPS meeting
FEB 14	LCPS board meeting-- all are welcome
FEB 15	<u>DEADLINE for newsletter</u>
MAR 13	LCPS meeting
APR 10	LCPS board meeting-- all are welcome
APR 15	<u>DEADLINE for newsletter</u>
MAY 8-11	Sally Strand Workshop
MAY 14-16	Sally Strand Workshop
MAY 15	Sally Strand Demo
JUN 12	LCPS board meeting-- all are welcome
JUN 15	<u>DEADLINE for newsletter</u>
JUL 10	LCPS meeting
JUL 25-AUG 23	LCPS Exhibition
AUG 14	LCPS board meeting
AUG 15	<u>DEADLINE for newsletter</u>
SEPT 11	LCPS meeting
OCT 9	LCPS board meeting-- all are welcome
OCT 15	<u>DEADLINE for newsletter</u>
OCT 17	LCPS Exhibition
NOV 13	LCPS meeting
DEC 11	LCPS board meeting-- all are welcome

All Meetings held at:

Perpich Arts Center
6125 Olson Memorial Highway (Highway 55)
Golden Valley, MN 55422



In case of bad weather

LCPS will email members by noon the day of the meeting and will contact people who don't have email. If you have questions, call Cheryl LeClair-Sommers at 651-481-9290 or email her at: tcawl@msn.com

Mission Statement: We seek to unite artists interested in the pastel medium and to serve their needs by encouraging artistic growth and development through education and sharing. We also work to create public awareness of pastel as a unique and beautiful art form.