

Dust in the Wind

LAKE COUNTRY PASTEL SOCIETY

From our President...



I've been contemplating the history of our newsletter, in particular the name. I happen to have been the first newsletter editor of the LCPS, performing that duty over a couple of years over a decade ago. The board of the newly formed LCPS needed to create a name for our newsletter. Among others, which I cannot now recall, "Dust in the Wind" was offered and selected as the name. That name is still a clever name, in my opinion, for our bimonthly newsletter with a play on words using both soft pastel and a well used phrase.

While wind has many meanings, it normally evokes the idea of the moving, ever changing flow of air that is present around the planet. The currents in the art world both reflect and shape our cultures. Over history, the creation of art and the artworks themselves has been and continues to reflect the identity and core of different cultures worldwide. As artists we are shaped by the currents of the art world, sometimes flowing with the current trends and sometimes fighting those winds. At times, we may reflect, adapt, and interpret ideas from other cultures that happen our way.

Dust certainly can infer many things, one of which is the dust that soft pastel makes when putting soft pastel stick to paper. That dust settles upon the objects of our lives – the tin foil trough that is constructed to gather the dust (so it doesn't move around the studio) or perhaps the pastels sitting below the painting or even the floor of our studio. But like that dust, a painter's love of art and, in particular, soft pastel permeates our lives. We try to spend as much time as possible painting, learning, and thinking about art, or hanging out with other artists, who seem to understand and sympathize with our fixation.

Dust also evokes a sort of ethereal, fleeting concept – one that is present one minute and may not be present the next. Certainly, the sort of creative concepts that artists bring to their easel may be fleeting and change over time. Some artists enjoy trying new ways to create, letting new products or techniques steer their muse. Other artists create artwork based upon a concept, which can be clear and concrete or elusive and ambiguous leaving the viewer to decide the meaning rather than the artist.

Over time, the newsletter "Dust in the Wind" certainly has evolved – from a black and white four-page newsletter, to a multicolor, multi-page newsletter, and on to a digital format delivered by email. Our editors have continued to raise the bar to produce quality newsletters with great content. Members that contribute information continue to provide rich content. I regularly get emails from our members that describe the wonderful content of our newsletters – thank you to our editors and those who contribute to our content. Keep it coming – you, our members, are a valuable asset to our organization.

In addition, the medium of soft pastel continues to evolve and has become a very popular medium. Artists continue to stretch the boundaries of the medium. We, as artists, make our mark (whether quietly or vocally) to influence the art world. This is an exciting time in the art world when no medium or style is favored on a global scale. What style do you think will be favored in twenty years? My plan is to keep on painting, still trying to develop a style, and let the dust settle where it may.

Cheryl LeClair-Sommer

Board of Directors

Cheryl LeClair-Sommer,
President, 651-481-9290

Rene Ellis, Treasurer,
651-690-5671

Bonnie Featherstone,
Program Chair,
612-823-8898

Kathy Fleming, Exhibits
Chair, 612-839-4439

Lisa Stauffer, Workshop
Chair, 218-728-6046

Michelle Wegler, Public
Relations, 218-343-6887

Karen Stombaugh,
Membership Chair,
952-473-2344

Barb Björnson, Historian,
651-636-1427

Elizabeth Strootman,
Newsletter Editor,
763-427-0860



Upcoming Classes Taught by LCPS Members

Ron Wilson

A Pastel Class:

*Mondays, 7-9 PM
and*

A Drawing Class:

*Wednesdays, 7-9 PM
at*

*Richfield Continuing
Education*

*For more information,
call 612-243-3000.*

GRAND MARAIS ART COLONY WORKSHOPS



Instructor:
[Lisa Stauffer](#)
Location:
[Founders Hall](#)
Tuition:
\$150.00
Class Size: 8



STILL LIFE IN PASTEL

March 10 - 11 & 12; 2 or 3 days;
9 am - 4 pm

This class focuses on still life painting in the versatile medium of soft pastel as we explore pastel brands, papers and techniques. Topics covered include painting fundamentals, choosing your subject and design and compositional considerations. We will paint still life indoors and learn how these lessons apply to all subject matter. Class time will include demonstrations, personal assistance at your easel, group critiques, and fun! A variety of pastels and paper will be available for purchase from your instructor.

You can choose to take this class for 2 days at \$150 or 3 days at \$225

[Register Now](#)

Member Exhibitions



"Jackson's Joy"

Sandra Dowd...

had a solo exhibit at the Owatonna Art Center in Owatonna, MN during the month of February. She exhibited her, "Origins" Series as well as recent children's portraits, including, "Jackson's Joy", a portrait of her grandson.



"Ellen"

Michelle Wegler...

is pleased to announce she will have an exhibit of paintings:

"Portraits - Fair to Fiery".

The exhibit, featuring primarily red-heads, will be at the North Shore Bank of Commerce, 131 W Superior St, Duluth, MN, in May and June, 2012. Opening reception will be May 9th.

Michelle has started a series on her blog about the project:

www.michelleweglerart.blogspot.com

Check it out!

Member Exhibitions



Lisa Stauffer...

had one piece, Old Blue Barge, juried into the Elk River Area Arts Alliance National Show, "Arts in Harmony". This will be displayed at the Elk River Government Center through March 28. It is a very interesting show...drop in to look it over if you have a chance.

"Old Blue Barge"

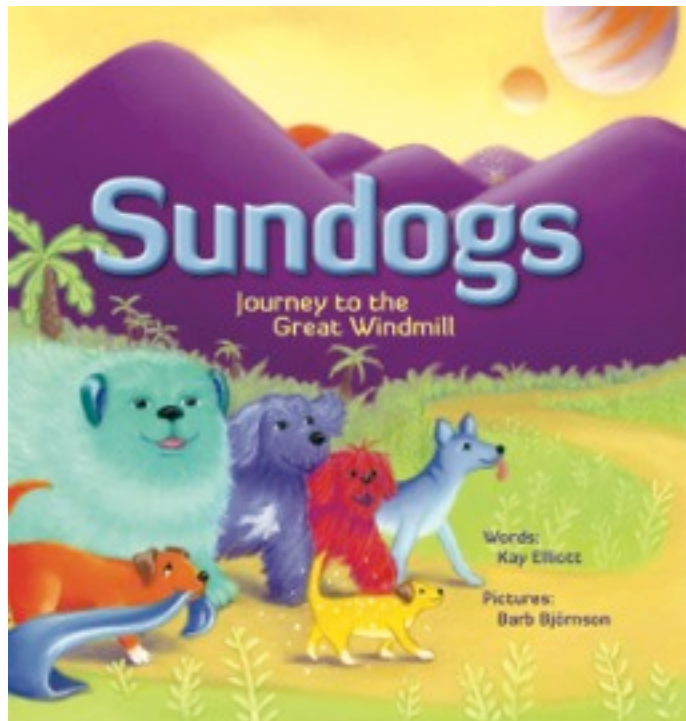
LCPS UPCOMING EXHIBITS

The dates for the upcoming exhibit are July 25 - August 23, 2012 to be held at the Elk River Arts Alliance Gallery. We have tentatively secured Richard McKinley as judge for this show.

Another exhibit is scheduled through the Phipps Center for the Arts Healing Arts Program to be held at Hudson Hospital from Oct. 17, 2012 - Jan. 13, 2013.

More details about these exhibits will be available in future newsletters.

Member Announcements



Barb Björnson

This is the cover for the new children's book Barb has illustrated.

It is a sweet magical story about the journey 6 dogs take to find their home. It begins on the planet Sundog where everything is very colorful including the dogs, Susu, Yogi, Harley, Bo, Zeke and Juno.

The book is at the printers and will be released in early spring. A book launching is planned for April 3rd. Location to be announced later.

Sundog

by Kay Elliott, illustrated by Barb Björnson

Congratulations!

Michelle Wegler

is pleased to announce that she is a FY 2011 recipient of a Career Development Grant from the Arrowhead Regional Arts Council, which is funded in part with money from the MN Arts and Cultural Heritage Fund as appropriated by the MN State Legislature from a vote of the people of MN on November 4, 2008; and the McKnight Foundation. This grant will assist with financing her exhibit "Portraits - Fair to Fiery".



Preparing to have your paintings judged - a few more thoughts...

I just want to say thanks to all the members who came to my presentation at the January meeting on critiquing your own work. We ran out of time before we ran out of both topics and work to critique! I did have a few thoughts about entering your work into juried shows that will be judged at the National level. Sometimes you are aware of who the judge will be, sometimes you will have no idea. Sometimes you may agree with the judge's choices; sometimes you may wonder if

that person was observing the same work that you are, because you do not seem to understand why a single choice was made by the judge! It is nice when you are able to hear some words from the judges about their choices and process because often that at least gives you some ideas about what they went through to choose both the work and the awards.

Both Elizabeth Mowry and Anita Louise West gave us a lot of information about their process while they judged our LCPS shows. Since I shared Elizabeth's thoughts about critiquing during the last meeting- I will include a few of my notes from Anita's talk during the judging of our show in 2009. Her list is similar to the points we discussed that we could judge our own work by.

Anita says that some of the things she considers seriously when judging a show or painting are:

1. Concept/Unity- What is the artist trying to say/ what do they say? Is it unified, with variety. Does it show- a thoughtful approach, experience with the subject, unique viewpoint; does it show the artist's personality?
2. Design - shape, line, color, etc. Does it read from a distance, is it exciting at all distances? Is the area of interest well placed. Is it balanced, with a sense of weight, distance...

Are there unexpected elements, pops of interest? Are all areas equally considered, even if played down?

3. Technique- shape, line, texture, value. etc. Is the color harmonious, check use of warm and cool. Is there good use of the medium, does it look like a pastel painting?

Many judges give a lot of thought to the elements and principles of design and the execution of the paintings that they are judging. Some seem to shoot from the hip, or use opinion only in making their choices. To give an illustration of another approach, this is paraphrased from an article by Daniel Keyes and the painter quoted is said to be William Merritt Chase.

About a woman's landscape as she is painting-

WMC- "Why is this painting purple?"

She responds- "Because that is how I feel."

WMC- "Please promise me, the next time you feel this way, you won't paint!"

Just know that both of these personalities will be judging your paintings when you send them out to the competitions. Grow a thick skin, live and learn, paint and grow, and enjoy the ride!

Lisa Stauffer



Self Portrait by Kathryn Kobs

March Program

We are in for a SPECIAL March Meeting. Our own Award Winning LCPS artist, Kathryn Kobs will present her first public demo for us!

Even though shy, she has been an active LCPS member in multiple ways. She has served as a diligent Board member, Secretary, author of informative art reviews for our newsletter and as photographer she has recorded our activities with outstanding photographs.

Kathryn has been on our program wish list for a long time.

DON'T MISS THIS ONE!

.....

A lifelong resident of St. Paul, I attended the University of Minnesota, graduating with a major in psychology and a minor in art history. In my early twenties, I worked as the secretary to the Minnesota Jaycees proximal to Jerome F. Ryan's studio. Mr. Ryan, the artist responsible for the portrait of Gov. Rudy Perpich that hangs in the State Capital as well as innumerable private portraits throughout the Twin Cities area, granted me on occasion the privilege of sitting quietly on a stool to watch him paint. I was allowed neither comment nor question. Now and then he would look at one of my paintings and rip it to shreds. For both the silent lessons and the brutal critiques, I remain grateful.

The remainder of my education as an artist came from a very large waste basket, having never benefited from art school or workshops (the later which I never knew existed) and of course the wonder before my eyes as I studied art history. I would wander about MIA wondering how anyone could accomplish such things. I would look at a Norman Rockwell painting on a Post cover (that dates me) and wonder the same. Time just kept going by and I kept painting and filling my waste basket. Failure is a hard but effective teacher and it keeps on teaching me to this day. It's always the next painting that will, hopefully, get it right.

Early on I switched to pastels for economy reasons---and Rembrandt pastels were the only game in art stores way back then. Of course, Canson Mi Tientes paper was the most logical option for pastel use, especially for someone fascinated by the ability of the artist capable of capturing a true likeness of another human being in 2 dimensions. I began with pearl grey and have rarely deviated from that color choice because of its neutrality. Recently I purchased a few other pastel brands, but, probably simply due to decades of familiarity, I prefer the old and tried.

During all the ensuing years since observing and wondering in awe at what Mr. Ryan could do, there were long stretches when I painted nothing. Years could go by and I didn't paint. But usually I felt an irresistible push to return to the easel. However, it was my granddaughter who urged me to paint again, which I did in 2005, after many, many years of not working. I am grateful to my granddaughter for her encouragement and to LCPS for giving me the experience of winning ribbons in juried exhibits. And my studio waste basket has plenty of use as I continue to try for the next one--the one that gets it right--- maybe the one to which Mr. Ryan might give a positive nod.

2012 Workshop Update

***** We still have openings! *****

Sally Strand Workshop

Tuesday, May 8 through Friday, May 11, 2012

Learn to See and Paint The Color of Light!

Light and its effects on color make the commonplace beautiful



Still Life with Tangerines (Ocean Series)
by Sally Strand
14 x 18" , pastel

.....

BALANCE DUE REGISTRATION FORM - Sally Strand - The Color of Light Workshop
Tuesday, May 8 - Friday, May 11, 2012

Downpayment of \$150, balance of \$395 is due 3/25/2012.

Name: _____

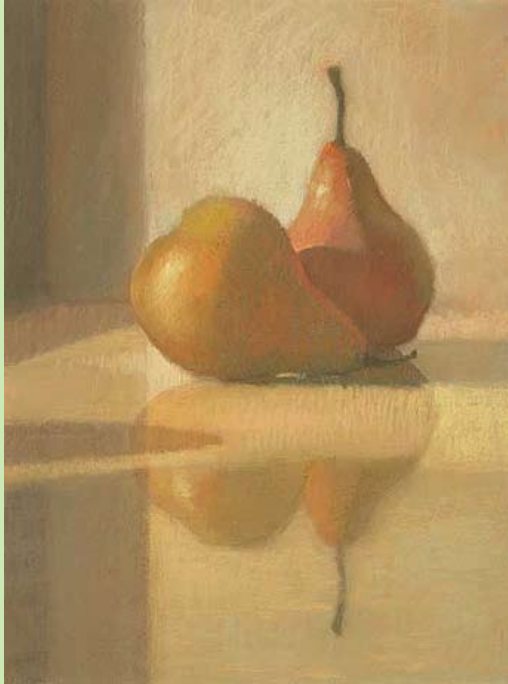
Address: _____

Phone: _____ E-mail _____

Amount Enclosed: _____

Mail check payable to LCPS to: Lisa Stauffer, 1831 E. 3rd St., #5, Duluth, MN, 55812

Balance due March 25, 2012



Sally Strand Workshop

Monday, May 14 through Wednesday, May 16, 2012

THE COLOR OF LIGHT 2 - THE NEXT LEVEL

A continuation of The Color of Light, this new class will progress to a higher level of painting, beginning with an in-depth look at creative compositional devices and how they apply to emotional content. We will focus on the later stages of painting, learning to harmonize color masses while developing the ability to really see and mix color, especially those that are nuanced and subtle. Finally, we will explore the finishing touches that turn paintings into personal statements.

Students will paint from costumed models and still life. Demonstrations, lectures and a slide show are designed to give students tools to achieve intensely beautiful color and light. Previous workshop or intermediate / advanced level recommended.

Learn how to infuse your paintings with
“the magical interactions of color and light”.

.....

BALANCE DUE REGISTRATION FORM - Sally Strand - The Color of Light 2 Workshop
Monday, May 14 through Wednesday, May 16, 2012

Downpayment of \$150, balance of \$250 is due 3/25/2012.

Name: _____

Address: _____

Phone: _____ E-mail _____

Amount Enclosed: _____

Mail check payable to LCPS to: Lisa Stauffer, 1831 E. 3rd St., #5, Duluth, MN, 55812

Balance due March 25, 2012

As we say goodbye to winter and march into spring...
here are three views of a winter moment from our PALS trio (Plein Air Lake Superior).



"Snow Dunes"

Cheryl LeClair-Sommer



"Snow and Dunes"

Lisa Stauffer



"Winter Moon"

Michelle Wegler

There is something about the snow-laden sky in winter...
in the late afternoon... that brings to the heart elation
and the lovely meaninglessness of time.

- Mary Oliver

Southeastern Pastel Society



OPEN FOR ENTRIES

THE SOUTHEASTERN PASTEL
SOCIETY'S
15TH JURIED INTERNATIONAL OPEN
EXHIBITION

May 17 through June 24, 2012
Oglethorpe University Museum of Art,
Atlanta, Georgia

Juror: Fred Somers

Approximately \$5,000 in Awards

**Deadline For Submissions: February 28,
2012**

Visit <http://www.southeasternpastel.org>



What's happening out
there?

Send me your Stuff! Paintings,
Drawings, Photos, Quotes, Tips,
Articles....

Preferred method is email:
elizabeth.strootman@hotmail.com
or

PLEIN AIR IN WINTER

LCPS 2012 Calendar

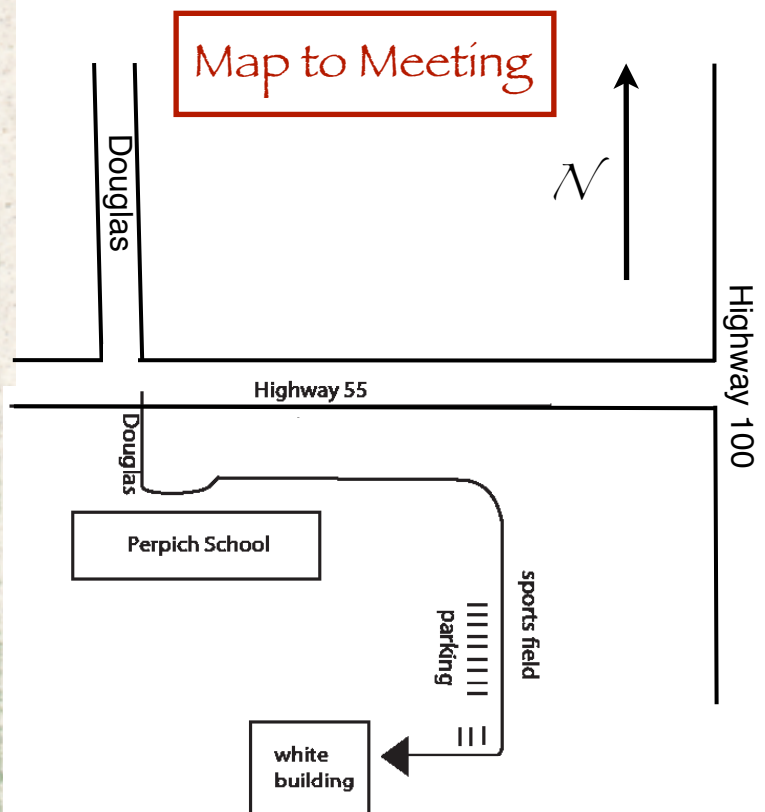
TIMES: 6:30 if you want to socialize
7:00 meeting begins

.....

MAR 13	LCPS meeting
APR 10	LCPS board meeting-- all are welcome
APR 15	<u>DEADLINE for newsletter</u>
MAY 8-11	Sally Strand Workshop
MAY 14-16	Sally Strand Workshop
MAY 15	Sally Strand Demo
JUN 12	LCPS board meeting-- all are welcome
JUN 15	<u>DEADLINE for newsletter</u>
JUL 10	LCPS meeting
AUG 14	LCPS board meeting
AUG 15	<u>DEADLINE for newsletter</u>
SEPT 11	LCPS meeting
OCT 9	LCPS board meeting-- all are welcome
OCT 15	<u>DEADLINE for newsletter</u>
NOV 13	LCPS meeting
DEC 11	LCPS board meeting-- all are welcome
DEC 15	<u>DEADLINE for newsletter</u>

All Meetings held at:

Perpich Arts Center
6125 Olson Memorial Highway (Highway 55)
Golden Valley, MN 55422



Once you get to the Perpich Center parking lot, drive to the East or left of the building, follow the curve going past the sports eld. There is a white building in the back and parking places past the eld. The meeting room is on the second oor. There is an elevator.



Mission Statement: *We seek to unite artists interested in the pastel medium and to serve their needs by encouraging artistic growth and development through education and sharing. We also work to create public awareness of pastel as a unique and beautiful art form.*