

Dust in the Wind

LAKE COUNTRY PASTEL SOCIETY

JULY, 2012



From our President...

I've always thought that Minnesotans and mid-westerners truly celebrate summer. The increased daylight hours are a respite from winter's darkness. We may congregate in the summer heat with a cool drink or hang out with the crowds to participate in the many activities that are available. Summer's art activities are in full swing with plein air events, art festivals, and craft shows. Another great event that shouldn't be missed is the Rembrandt exhibit at the

Minneapolis Institute of Art – check it out on a rainy or cloudy day. What an opportunity!

To slow things down, I like to sit on the deck to read a good book (okay I'm always reading books, some are even good). A recent book I've read is "The Forest Lover" by Susan Vreeland. The story is a fictional account based upon the life of Emily Carr, an artist who painted in the Vancouver area during the early 1900's. What struck me most about the book is the passion and innate need that Emily had to paint. Her decision had many consequences - some positive and some negative. She experienced much loneliness as a result of her singular decision to pursue her art. She felt excluded by her family who didn't understand her passion to paint the disappearing totem poles of the native communities. But while she spent a year in Paris to learn to paint, she made lifelong friends, one of whom is Frances Anne Hodgkins (you may know her paintings of canoes and fur traders – many of which are reproduced as posters at the MN History Center). For some years in Emily's mid-life, she painted very little since she felt her art was not understood or appreciated. Later in her life, her art found international acceptance with an exhibit at the National Gallery of Canada and exhibitions with the Group of Seven.

How lucky we are to have such a great organization, the LCPS, where we can talk with fellow pastel artists who speak the same language and share our passions. The opportunity to share our need to create and discuss the tools of our trade truly helps to balance out our life alone in the studio. The LCPS also provides a great outlet to exhibit our artworks created in soft pastel, a truly unique and beautiful medium.

Be sure to attend the July meeting, which will feature a pot luck and critique. This meeting, held at the Tony Schmidt picnic shelter, is a great opportunity to hang out with old friends and meet new artists who share your passion in painting in soft pastel. I hope that you can join us.

Cheryl LeClair-Sommer
LCPS President

Board of Directors

Cheryl LeClair-Sommer,
President, 651-481-9290

Kathy Kobs, Secretary,
651-633-4182

Rene Ellis, Treasurer,
651-690-5671

Bonnie Featherstone,
Program Chair,
612-823-8898

Kathy Fleming, Exhibits
Chair, 612-839-4439

Lisa Stauffer, Workshop
Chair, 218-728-6046

Michelle Wegler, Public
Relations, 218-343-6887

Karen Stombaugh,
Membership Chair,
952-473-2344

Barb Björnson, Historian,
651-636-1427

Elizabeth Strootman,
Newsletter Editor,
763-427-0860



Member News



Cheryl LeClair-Sommer...

Cheryl spent June 19-23 as a featured artist for the

Markleeville Art Gallery

in the Sierra Nevada Mountains of California.

That busy week was followed by her attendance as a featured artist in the Red Wing Art and Music Festival. (See below)

Check out Cheryl's website at: leclairsommer.com. Feel free to sign up for her quarterly newsletter to receive occasional updates.



Cheryl LeClair-Sommer, Pat Duncan, Fred Somers & Lisa Stauffer...

participated in the Red Wing

Plein Air Art & Music Festival

June 23 - 30, painting in the Red Wing area. In addition, Fred was the featured demonstrator in Pastel.

This year's plein air festival was judged by Kami Polzin. Because she thought there were so many good paintings that deserved a mention, she needed more than the 6 cash awards that were going to be awarded. She used the designation "Judge's Award" for those paintings she also wanted to showcase for their merit. Lisa received an Honorable Mention while Cheryl received a Judge's Award and Fred received two Judge's Awards. Pat sold a piece at the opening.

The exhibit will be on view at the Red Wing Art Depot, the former train depot, through the end of August 2012. This charming town is an easy day trip along the Mississippi River if you'd like to see the show.

Pat commented that the week was the most fun she had experienced in a very long time.



October's Arrival

Lisa Stauffer...

Lisa's painting, "October's Arrival" was accepted in the

IAPS 20th Juried Exhibition

at the Brea Gallery in Brea, CA. The show opens August 4, 2012, 7-9 p.m.



Grand Marais Plein Air Quick Paint

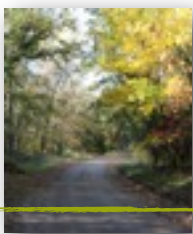
Lisa will be teaching a 5 day plein air course in Grand Marais July 9-13, see grandmaraisartcolony.org for all the details or to register. This photo of her painting and Scott Lloyd Anderson and part of the film crew is from the quick paint portion of the plein air competition in Grand Marais 2011. WDSE television filmed a show during this 90 minutes that did a great job of showcasing this experience by following the process of several painters and getting the judge's comments as those minutes raced by. The link to view it is www.wdse.org/shows/playlist/watch/plein-air-brush



Birch Lady

Sandra Dowd...

has 3 three paintings in the Summer 2012 issue of SHARK REEF, an online literary magazine, which should be up by mid-July. If you're interested in seeing them go to www.sharkreef.org.



Down memory lane...



Richard McKinley Workshop

Joan Reynolds...

has shared this oil painting she did of the Richard McKinley plein air workshop a few years back.

She also passed on this sentiment:
“Your pastel group in MN is the best.”



IN SYMPATHY

Dave Beauvais, a member and director of the Elk River Art Alliance, died in early June 2012. His friendly face, big smile, beautiful artwork, and tireless commitment to facilitating art exhibits at the Sherburne County Government Center (including the national juried exhibition) will surely be missed.



COL I. Class painting an interior with a model

We had two wonderful, informative workshops with Sally Strand in May. She also gave a great show for our May meeting. Those of us fortunate enough to have been in her classes are still working hard to process and apply all that we learned. Many have given Lisa, our workshop chairperson, enthusiastic reviews of the classes, including comments about how Sally's classes changed everything they thought they knew about painting... the change is unbelievable!



Sally giving her insights about a painting



Paintings lined up for review at the end of class.

A big THANK YOU to our always attentive workshop crew Lisa Stauffer, Denise Bunkert and Rene Ellis! ...and Cheryl and Todd for a lovely evening!

If anyone lost an item at the Sally Strand workshop or meeting, please contact Cheryl to describe it and have it returned.

Announcing...

The 2012 LCPS Members' Exhibit
'On Inspiration II'

This fantastic exhibit is currently on display at the
Sherburne County Government Center until August 2, 2012

An artist's reception will be held
Thursday, August 2 from 6:30 - 7:30 PM
Awards will be presented at 7:00 PM with Judges comments following.

Our little group can be very proud of this spectacular collection!



Misty Morning Hay Bales

Christopher Copeland

The LCPS is pleased to announce that Christopher Copeland will judge our summer exhibition 'On Inspiration II'. Christopher is a Minnesota native who paints in both soft pastels and oils. He is a 1983 graduate of the College of Visual Arts who has exhibited nationally in N.Y., Boston, Ohio, Seattle, Scottsdale, Santa Fe, and (of course) MN. Raised in rural Washington County, MN, Christopher grew to develop an interest in painting, in particular creating emotional, atmospheric works that focus on the effect of light and shadow. He is inspired by George Innes, John Twachman, and Winslow Homer. Check out his website at: ChristopherCopeland.com.

Upcoming LCPS Exhibit

Another exhibit, scheduled through the Phipps Center for the Arts Healing Arts Program, will be held at Hudson Hospital from Oct. 17, 2012 - Jan. 13, 2013.
More details about this exhibit will be available in future newsletters.

Note
start time
and
location!

July Meeting
at
Tony Schmidt Regional Park
Arden Hills, MN

Tuesday, July 10
6:30 p.m. to 9 p.m.

Brief meeting, pot luck, and critique.

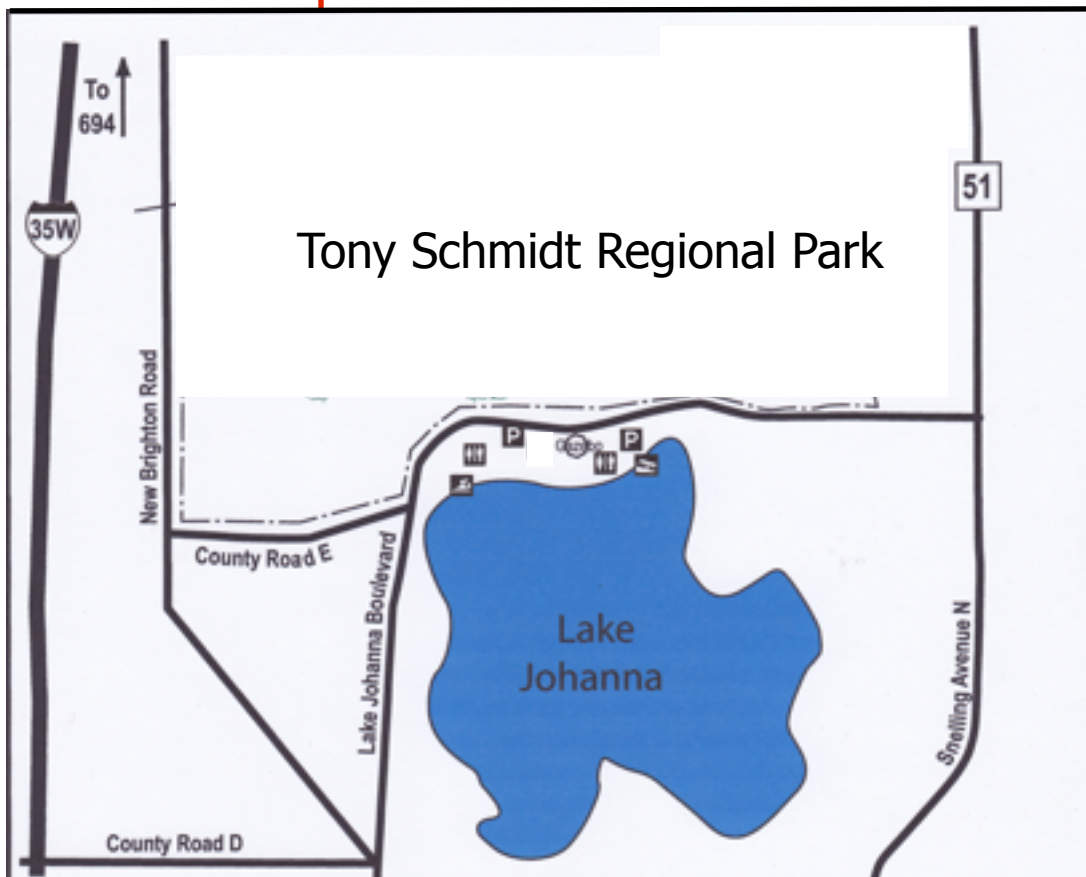
Bring a dish to pass.

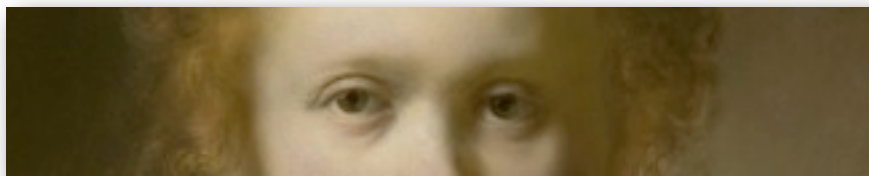
Bring your personal utensils and beverage.

.....

Bring a work of art for the critique.

The format will be the same as last July with 3
LCPS members doing the critique.





The Minneapolis Institute of Arts

presents

The largest selection of Rembrandt paintings assembled in the United States. Ever.

Sunday, June 24—Sunday, September 16, 2012

Target Gallery (admission charged)

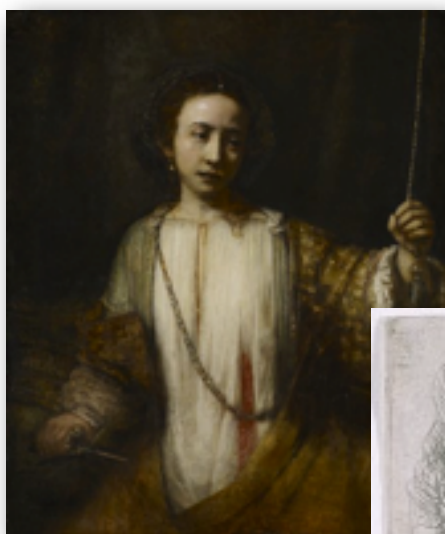
Ticketed Exhibition

(FREE for members!)

Tickets for *Rembrandt in America* are \$12-\$14 (free for members). Reserve tickets online, at the door, or by calling [\(612\) 870-3000](tel:6128703000), or toll-free [\(888\) 642-2787](tel:8886422787). Tickets may sell out at peak times and on weekends.

[Reserve tickets online](#)

Experience a nation's passion for paintings by Rembrandt and his followers. And witness the trajectory of this 17th-century Dutch master, from brash young artist to timeless observer of humanity. In addition to undisputed masterpieces by the artist's hand, you'll see portraits once attributed to Rembrandt, and find out why they no longer are believed to bear his mark.



Exhibition Opportunities

The Degas Pastel Society

invites you to participate in the :
Degas Pastel Society 14th Biennial National Exhibition
to be held in Covington, La. (New Orleans area)
September 8-October 6, 2012
July 2, 2012--ENTRY DEADLINE
Judge -Urania Christy Tarbet
Over \$5000 in prizes
www.degaspastelsociety.org

The Pastel Society of New Mexico

calls for entries to its
21st Annual National Pastel Painting Exhibition.
November 2-25, 2012
to be held at Expo New Mexico in Albuquerque, NM.
Digital entries due August 15
Judge of Awards is Kim Lordier. Jurors are Lorenzo Chavez, Susan
Ogilvie and William Schneider. Cash and merchandise awards of
approximately \$10,000. Original and 80% soft pastels only. Maximum of
3 digital entries, \$35 (members), \$40 (non-members). Prospectus and
Workshop info available at www.pastelsnm.org or send SASE to PSNM-
M, PO Box 3571, Albuquerque, NM 87190-3571.



You can own a painting by one of our prize winning painters

Each year the Pastel Society of America raffles off paintings donated by renowned artists.

One ticket costs \$5; a book of six tickets \$25; and because the PSA is celebrating their 40th anniversary, if you purchase 2 books, the cost is \$40. Proceeds go towards the success of their school

These are the works donated by this year's artists:



Lamplit, Adagio Bed & Breakfast
by Sandra Burshell, PSA



French Quarter, New Orleans
by Bill Creevy, PSA



Pigeons
by Aline Ordman, PSA



Finally Spring
by Susan Ogilvie, PSA



Kitchen Shelf
by Pat Tribastone, PSA

**Drawing for prize winners is Sunday, September 23rd
at the PSA Awards Dinner
National Arts Club**

You do not need to be present to win!

To obtain raffle books, contact PSA at
(212) 533-6931 or email psaoffice@pastelsocietyofamerica.org

Insights to Ponder...

" Beauty is all around. It is the gift and the responsibility of the visual artist to share his interpretation of that beauty."
Sandra Burshell, PSA

" I usually start a painting with a few ideas of my own, but very quickly the painting itself takes over and tells me how to finish..."
Bill Creevy, PSA

LCPS 2012 Calendar

TIMES: 6:30 if you want to socialize
7:00 meeting begins

JUN 25-Aug 2 LCPS Exhibit on Display

JUL 10 LCPS Potluck & Critique
Meeting 6:30pm

AUG 2 Exhibit Reception 6:00pm

AUG 14 LCPS board meeting

AUG 15 DEADLINE for newsletter

SEPT 11 LCPS meeting

OCT 9 LCPS board meeting--
all are welcome

OCT 15 DEADLINE for newsletter

OCT 17 - JAN 13, 2013 LCPS Exhibit

NOV 13 LCPS meeting

DEC 11 LCPS board meeting--
all are welcome

DEC 15 DEADLINE for newsletter

" My goal as an artist is to find those times and places where beauty is not only evident, but startling and suddenly present.."

Aline Ordman, PSA

" Painting is the gift of observation that informs and connects. I can't imagine a more interesting and challenging pursuit."

Susan Ogilvie, PSA

" My work is a result of my innate desire to put down on paper the beauty I see all around me; I delight in the smallest fragments of light and color."

Pat Tribastone, PSA

Mission Statement: We seek to unite artists interested in the pastel medium and to serve their needs by encouraging artistic growth and development through education and sharing. We also work to create public awareness of pastel as a unique and beautiful art form.