



# Dust in the Wind

## LAKE COUNTRY PASTEL SOCIETY

January 2014

### The Artist's Corner



Developing our supportive artist communities....

As we continue to explore the creative process, we discover that art is an act of our soul. Our great desire is to engage our creative spirit and develop our spiritual community. It is in the realm of the sacred, which involves our dreams and visions for our art. The energy that we experience involves the forces that are much larger than our own. This sacred transaction is a

mysterious part of our transformation.

When we gather as artists, it is in the spirit of sacred trust. We are establishing our sacred circle. We invoke our Creator as we engage in the creative force that has the answer to our dreams, fulfill our destinies and can empower and alter our lives. The spirit moves through all of us and as we deal with one another, it involves our human personalities along with our visions, stories, ideas, poems and songs. It becomes important to acknowledge and draw our Sacred Circle, our highest principles are what motivate us to do and be our best. In the midst of our fellow artists, we are invited to the spirit of service to our highest good. Success can happen in our cluster of artists. By drawing our Sacred Circle, we create a place of safety and a center of attraction for our good. We continue to draw to us the best and we draw the people we need. We attract the gifts that we can best utilize.

Our Sacred Circle is built on respect and trust. The image comes to mind of a garden. Every plant has its own name and place in the garden. Each bloom has its own uniqueness and beauty that cannot be replaced. Our gardening hands need to be gentle ones. We must bear with each other's process of growth, periods of dormancy, fruition and reseedling. In the natural world, we are constantly reminded that every loss has a meaning. Let there always be a place to try, to falter, to fail and try again. Any creative failure can nourish and provide growth for next season's creative successes. There is no quick fix, but rather we need to be in this for the long haul, like the ripening and the great harvest.

As artists, we spend a great deal of time doing our work alone. This is all very good, however, through our creative clusters and Sacred circles, we benefit the most from the care and support of others who continue to share in our dreams of living a fuller life. It is through these interactions with our fellow artists, that we can experience someone else's breakthrough insight which may trigger or bring about one of our own. We have the good fortune of helping each other out. As artists, we look for and find those that believe in us and in whom we can believe in. It becomes of great importance to band together and give each other the support we need to grow. And, the truth is that when we do, very powerful and exciting things can happen for all of us.....

### Board of Directors

Patricia Duncan  
President,  
612-644-6798

Bruce Koprucki  
Vice President  
952-448-7559

Bruce Koprucki  
Acting Treasurer,  
Officer needed

Heather Hultgren  
Secretary,  
651-739-1329

Cynthia Kath  
Program Chair  
651-297-8558

Eileen France  
Exhibits Chair,  
952-431-9753

Mary Ann Cleary  
Lisa Stauffer  
Workshop Chair,  
763-552-86506

Michelle Wegler  
Public Relations,  
218-343-6887

Karen Stombaugh  
Membership Chair,  
952-473-2344

Barb Björnson  
Historian,  
651-636-1427

Elizabeth Strootman  
Newsletter Editor,  
763-427-0860





### **WHAT WE LEARN FROM OTHERS...**

It is with great pleasure, that I introduce our LCPS member artists. It is another opportunity to connect with our members and find out more about who they are and what their art means to them. Our newer featured artists are Carol Molepske from Stevens Point, Wisconsin and Collette Gesinger from Sioux Falls, South Dakota. They are from a further distance, but we are grateful for their interest in joining our pastel society. Carol Rowley and Laura Shimek are two of our other featured artists and their love of art, particularly pastels is evident in their writings. We look forward to their continued success and connection to LCPS. Let us welcome them.

#### **Laura Shimek**

I have always identified myself as an artist. Some of my earliest memories are of sitting at the breakfast nook, drawing on a roll of butcher paper while my mother did housework with NPR classical music station as our background music. My mother nurtured my love of drawing, buying me paper and good pencils, indulging my cravings for the 64 box of crayolas instead of the puny 24 count, giving me watercolor sets, and driving me to and from art classes at the Waterloo Arts and Recreation Center. She also gave me my first set of pastel pencils in junior high, and took me to the college book store to buy my first set of Rembrandt pastels when I had saved up enough money. We loved going to art museums where we could wander for hours taking in artwork--a feast for the eyes and the soul.

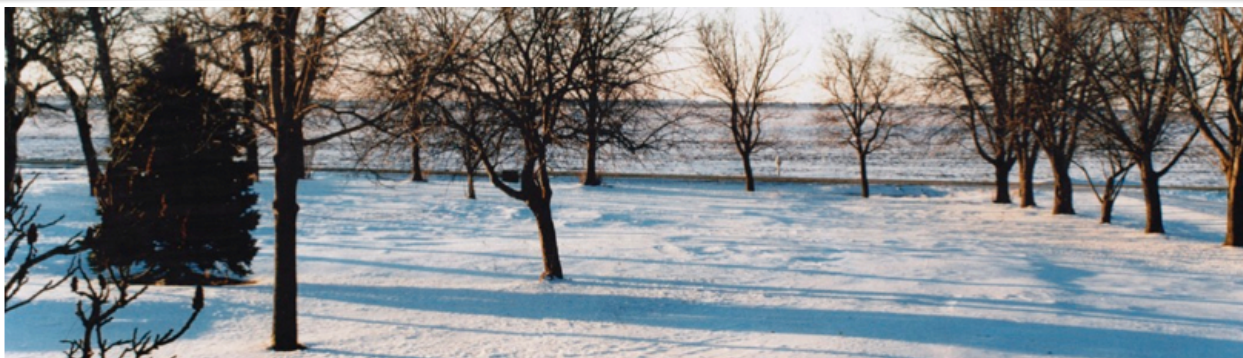


*Wyoming Spring*

In those early years I never doubted who I was, and what I would be doing with my life. I got a degree in Art Education from Iowa State University, having downgraded my ambitions from being Michelangelo to Mary Cassatt to..?, and realizing I had to make a living somehow. 40 years, one husband, three children, and 8 moves to 6 different states later, my art career has been sporadic at best. I did wildlife drawings for various organizations early on, some scientific illustration for graduate students while my husband was in graduate school, and a few greeting card designs along the way, as well as simply trying to do artwork for myself. Now that our kids are grown and gone, I am trying to find time to become my version, at least, of Grandma Moses, reminding myself it is never too late to do what you love! I have much to re-learn about art, and much to learn about pastels, but I am enjoying the journey back--forward--hoping to find the self-assured little girl who knew without a doubt she was an artist!

"To know even one life has breathed easier because you have lived, this is to have succeeded."

Ralph Waldo Emerson



*This is a photo of the orchard on the farm where I grew up. Send me an image from your 'childhood place' and I may be able to use it for filler sometime. Elizabeth Strootman*

**Carol Rowley**

Through my paintings I want to share the beauty of outdoor environments. Pastel painting is the medium I selected because of the fantastic saturation of color. I was hooked on pastels when I took my first class from Barb Björnson at Banfil-Locke at least 15 years ago. Thanks to LCPS I have been able to attend many workshops from nationally known artists, my favorite being Elizabeth Mowry.

I grew up in Roseville and experienced art in school. While in high school I had a wonderful art teacher who greatly influenced me to pursue a degree in Art Education. Through the years I've tried many art mediums from batik to watercolor but I always return to pastels.

*Wahlberg Road*

Several years ago I retired from retail and its crazy hours. I now cherish the free time I have every day. A few years ago my husband and I bought a small cabin on a river 80 miles north of the Twin Cities. Getting lost on country roads in search of new rivers, lakes, parks, and farm fields has become a favorite pass time. These ramblings have given me many visual impressions and much inspiration to use in future paintings. My painting Walberg Road was just finished from photographs I took in September.

I feel so lucky to have a passion for art that keeps me interested in the world around me.

**Collette Gesinger**

As a child I was always interested in art. We lived on a farm so I attended a country school where art supplies were limited to the crayons you brought from home. I always coveted the box of 48 (64 hadn't been invented yet!) but probably was limited to a smaller box due to the large number of children in the family. As I continued my education there were no art classes available to me until I went to college. Of course I was very naïve and thought you went to college to learn new things; I didn't know you were supposed to have a foundation of sorts before you went.

*Nebraska River*

Majoring in Health and Physical Education with an Art minor was a struggle to say the least. If I hadn't been so naïve I probably should have become a language arts or social science teacher! My college art classes were not conducive to learning the fundamentals of art as at that time the theory in art was more how the artist felt about . . . well I confess I don't know about what we were supposed to be feeling even to this day. We mostly were just told to be creative—I know, it was the late 60's.

As a result of my college experience I swore that it would have to be the last job on earth before I taught art; it was. . . twice! I was a classroom teacher for four decades; a long time to be in eighth grade. Now that I am retired I have turned my focus back to art.

I have been interested in pastels since I was in middle school, but hadn't taken the time to really do anything with them. Last summer I was lucky enough to get into your pastel society's workshop with Albert Handell. So I really am a pastel beginner and have found out what all of you already know, it isn't as easy as it looks.

Some day I hope to have a style, right now I am just trying not to make mud and enjoy the journey.



**Carol Molepske**

Art has been a constant in my life, from doing a decorative alphabet for my teacher in elementary school to classes at the Art Students League in NYC. I also received a BFA from the University of Wisconsin, Stevens Point. My Physical Therapy background, which was practiced since college graduation, has given me an understanding of the body which has improved my figure drawing. My pastels have been influenced by Joaquin Sorolla (magnificent use of light), Edgar Degas (line, mixed media and inventive composition), Robert Beverly Hale (teacher of figure drawing at the League), and Albert Handell ('his hand' in the use of pastels).

*February Reflections*

My purpose in pursuing art is to understand what I see and translate the 'spark of life' that first caught my eye. . . to hold the moment. Whether the subject matter is a landscape, still life or figure, the visual tools of light and color carry me through discoveries, insights and enrichments. This process is often difficult and frustrating work for me with the unknown mountains/ valleys to traverse. But if it works, it is so rewarding and it spurs me to try again. And how can one leave those delicious pastels colors alone for any length of time!

I am a signature member of the PSWC, CPP and an associate member of the PSA. My studio is in my home in Stevens Point, WI.

Joining the Lake Country Pastel Society has already been an adventure in pastel friends and learning opportunities. Thank you.

### Calling all Lake Country Pastel Society Members!

You won't want to miss this wonderful opportunity to spend a fun-filled workshop weekend with our very talented member, Lisa Stauffer. Lisa is excited to be giving an opportunity for our members to learn some very helpful painting tips and techniques. The still life workshop will be held President's Day weekend (February 14 - 16, 2014) at Pax Christi Catholic Community in Eden Prairie, MN.

### More News from our President!

We are pleased to announce that the LCPS Board members made a decision to give \$250 to the 19<sup>th</sup> Annual 2014 Arts in Harmony International show for the Pastel Award. The opening reception for this event is February 9<sup>th</sup> at 1:00 - 3:30 at the Sherburne County Government Center.

LCPS members Barb Björnson and Elizabeth Strootman have been working very hard to get our new website launched. Mark Ellis is helping with the website reconstruction. We started the process back in March, so it has taken a great deal of time and effort, and we are looking forward to having it launched in January of 2014.



The next LCPS exhibit event will be at the Burnsville Performing Art Center from June 19<sup>th</sup> – July 13<sup>th</sup> 2014. We are in the process of looking for a judge for the event and the opening reception will be on June 19<sup>th</sup>.

## LCPS Exhibit Opportunities!

The second exhibit for 2014 will be at the Frameworks Gallery in Highland Park in St. Paul. We welcome all members to exhibit in this great gallery. The date for this exhibit is September 13<sup>th</sup> – November 1<sup>st</sup> of 2014.

Our acceptance into the Phipps Center for the Arts will be at their Hudson Hospital location in 2015. The dates for this exhibit will be April 15<sup>th</sup> – July 15<sup>th</sup> of 2015. We have some wonderful opportunities for all of our talented LCPS artists to get their creative spirit moving.

## Member News



### *Cynthia Kath...*

...received a Merit Award for “Sunlit Manor” in the Jaques Plein Air Competition in Aitkin, MN. Enjoy a fun video of Cynthia, filmed on location as she painted: <http://www.youtube.com/watch?v=tlFGuuUyEMY>

*Sunlit Manor*

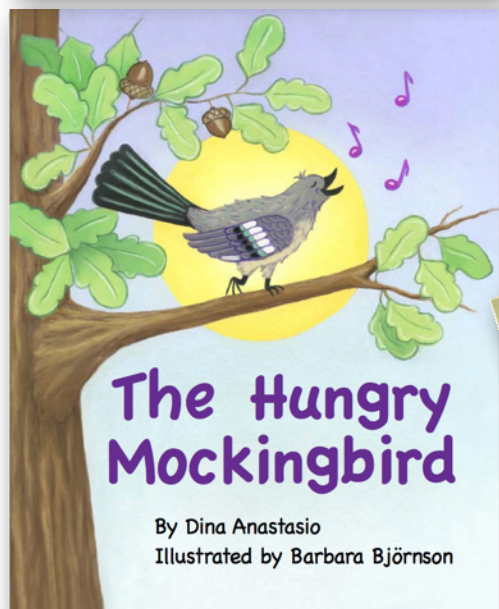
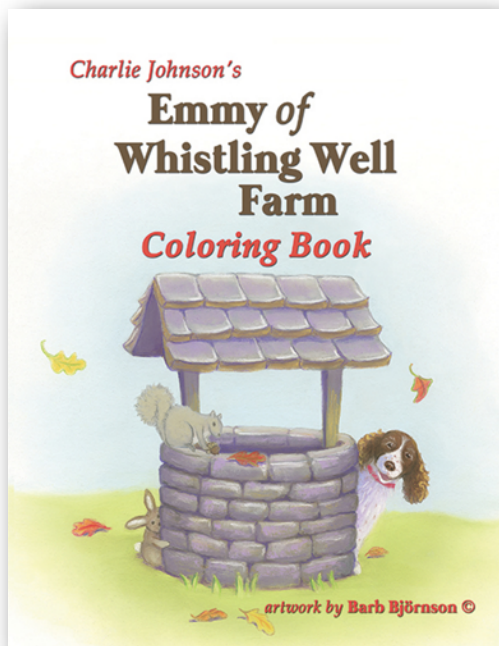


## Barb Björnson...

...has made a coloring book that is a companion to "Emmy of Whistling Well Farm". The owner of the apple farm, Charlie Johnson, sold the coloring books at his farm and at the farmer's market this fall. He sold out and had to have more printed after only a few weeks!

...recently finished illustrating a darling book titled: The Hungry Mockingbird. It is a digital book published through Pearson Education. It will be on the 1st and 2nd grade reading programs! It is a story about a very hungry mockingbird that wants to have a delicious dinner of fruits at the bird feeder, but a very hungry cat is in the way. "I love the story and had a wonderful time illustrating this book."

...the Jewish Grandparents Book that Barb illustrated, published by P J Library, has been printed in Spanish. Felicitaciones, Barb!



E a r t h w i t h o u t

**ART**

i s j u s t E h !



*Dancing Muses*

## *Sandra Dowd...*

...was invited to represent MN in the inauguration of the website, Figure50, an interactive map of the US figurative artists. If you go to the site, [www.figure50.com](http://www.figure50.com), and click on the map of MN it will take you to Sandra's website. The map changes on a bimonthly basis. Her drawing "Dancing Muses," a pastel, was featured.

...had her painting, "Emerging Artist with Attitude," accepted into the Pastel Society of New Mexico's National Juried Exhibit and it won the Dick Blick Award!

...she also has two paintings accepted into the juried "Arts in Harmony" international exhibit.

...has a new gallery representing her work: Three Sisters Eclectic Art Gallery in lower town St. Paul.



## *Sher Leksen...*

...won an honorable mention award at the Artists del Norte open show.

*Sher with our workshop instructor, Master Pastelist Albert Handell*



### Highlights from the November 2013 Lake Country Pastel Society Board Meeting

Our new year will kick off with Bonnie Featherstone speaking at our meeting on January 14, 2014. She will be sharing the nuts and bolts of being a professional artist and business tactics. Don't miss Bonnie's energetic and inspiring presentation!

We look forward to our new website and thank Barb Bjornson, Elizabeth Strootman, and Mark Ellis for all their time, energy, and creativity for its development! Our mentoring program is up and going, and if there is anyone who would still like a mentor after the New Year, please contact Heather at: [hultgren4@msn.com](mailto:hultgren4@msn.com).

The Richard McKinley workshop promises to be one of our highlights this year. It is full at this time. Mark your calendars for our Juried show June 19-July 13 2014, at Burnsville Performing Arts Center, and our members show at Frameworks Gallery in St. Paul on September 13-Nov. 1, 2014. Two exciting events, don't miss them! Looking forward to a great year!

Respectfully submitted,  
Heather Hultgren  
Board Secretary



#### NOVEMBER PROGRAM NOTES: MaryAnn Cleary Presentation

MaryAnn Cleary's Presentation at the November meeting for our Lake Country Pastel Society was extremely important and informative.

She demonstrated how to make "quality, soft pastels at a considerably low cost." I personally found she is not only an outstanding artist but



a skilled chemist who was able to give us, in a simple format, the ingredients to take on this project of making our own pastels. Her detailed handout included materials and supplies as well as recipes and directions. She recommends the book: The Art of Pastel Painting by Alan Flattmann, for further reference. [Maryanncleary.com](http://Maryanncleary.com) Submitted by John Heckman.





## January Program

January LCPS Member Meeting  
Tuesday, January 14<sup>th</sup>, 7 - 9:00 p.m.

### "Starting off the New Year with a Plan"

Bonnie Featherstone will be speaking about her experiences as a pastel artist. She will discuss these topics:

- What makes a professional artist
- Why keep records?
  - including the records of all entries and dates related to art exhibits and keeping calendars.
- Assessing networks and marketing.
- How to build support teams.
- The need for artists to be public communicators.
- Encouragement for artists to stay motivated.
- How to Look at Art

**Refreshments and cake will be served AND there will be door prizes.**

**Bonnie Featherstone** (Home 952 890 0889 Cell 952 200 4092)

WELCOME 2014!

with the transcendent and enticing  
beauty of nature challenging us  
to capture the colors of light  
and compelling us to paint.



## CHASE AWAY THOSE WINTER BLUES

with some fun painting time with your friends at the  
Lake Country Pastel Society member workshop:

### Artistic Essentials- Still Life In Pastel

**Lisa Stauffer**

February 14-15-16, (Fri-Sat-Sun) 2014

9 am- 4 pm

Sponsored by Lake Country Pastel Society

[www.lakecountrypastelsociety.org](http://www.lakecountrypastelsociety.org)

Contact: Lisa Stauffer, 218-728-6046, [lksart@aol.com](mailto:lksart@aol.com)

MaryAnn Cleary, 763-552-8650, [maryann@maryanncleary.com](mailto:maryann@maryanncleary.com)

To be held at:

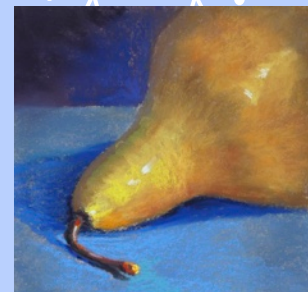
Pax Christi Catholic Church, Room 212

12100 Pioneer Trail

Eden Prairie, MN 55347

Enhance your skills through a better understanding of the key principles artists need to know to improve their paintings. We will discuss design and composition, painting fundamentals, the importance of accurate drawing and those valuable tools: color, value, intensity, temperature... Working from simple still life set-ups, we will learn how these lessons apply to painting all subject matter. We will explore pastel brands, papers and techniques, class time will include demonstrations in pastel, personal assistance at your easel, group critiques and fun!

**Instructor Bio:** Lisa Stauffer received her Master's in Design (University Of Minnesota) and studied illustration at Parson's School Of Design (NYC). She has worked and taught in a wide variety of media. Lisa now paints primarily in pastel with a special focus on painting en plein air to indulge her fascination with light and color in Minnesota's beautiful north shore landscape. Lisa holds Master Circle status with the International Association Of Pastel Societies and is a Signature member of the Pastel Society Of America. [lisastauffer.com](http://lisastauffer.com)



Tuition is \$225 for the 3-day course. To register fill out the form at the bottom of the page.

While we know that this is a shorter time than is typical for considering a workshop, we do hope you will join us for some winter fun painting with LCPS friends! **Please let us know of your interest in the workshop by January 31st, 2014**

### REGISTRATION FORM

Lisa Stauffer Workshop through LCPS  
held at Pax Christi Community Church  
February 14,15,16/ 2014

Name: \_\_\_\_\_ Phone: \_\_\_\_\_

Email: \_\_\_\_\_

Amount enclosed: \_\_\_\_\_ \$225

Mail **check payable to LCPS** to:

MaryAnn Cleary

PO Box 551

Cambridge, MN, 55008



**Reminder!**

**January is "Membership Renewal Month"! Please use the new form here. Mail it with your check to Karen Stombaugh or bring it to the January 14th members' meeting. THANKS!**

LAKE COUNTRY PASTEL SOCIETY  
Membership Application: New and Renewal

**Dues are \$30 per year. Renewal is January, with extension offered until February.**

**Please fill in the following information and send form with payment to:**

Karen Stombaugh  
3565 Deephaven Ave.  
Deephaven, Minnesota 55391

**Make check payable to Lake Country Pastel Society**

Name: \_\_\_\_\_ Phone: \_\_\_\_\_

Email Address: \_\_\_\_\_ My Website: \_\_\_\_\_

Address: \_\_\_\_\_ City \_\_\_\_\_ State \_\_\_\_\_ Zip \_\_\_\_\_

**How can LCPS be of help to you?  
Mark areas of interest.**

☐ Demos                      ☐ Gallery Outings  
☐ Workshops                ☐ Field trips/studio  
                                     ☐ Tours/Museums  
☐ Mentorship                ☐ Individual  
                                     ☐ Critique  
☐ Paint Outs                 ☐ Group Critique

☐ Other: \_\_\_\_\_

\_\_\_\_\_

\_\_\_\_\_

**How can you help LCPS? (*Volunteers are essential to the function of a dynamic society like ours!*)**

☐ Exhibit Committee  
☐ Newsletter  
☐ Program Committee  
☐ Website  
☐ Workshops  
☐ Membership  
☐ Public Relations  
☐ Finance/ Accounting  
☐ Organize talk or Demo  
☐ Car Pooling  
☐ Assign me a task!

**About You:** I am a ☐ Hobbyist  
                                     ☐ New to Pastel  
                                     ☐ Art Professional  
                                     ☐ Art Educator  
                                     ☐ Pastel Instructor  
                                     ☐ Other \_\_\_\_\_

\_\_\_\_\_

**Your Painting Subject Matter:**

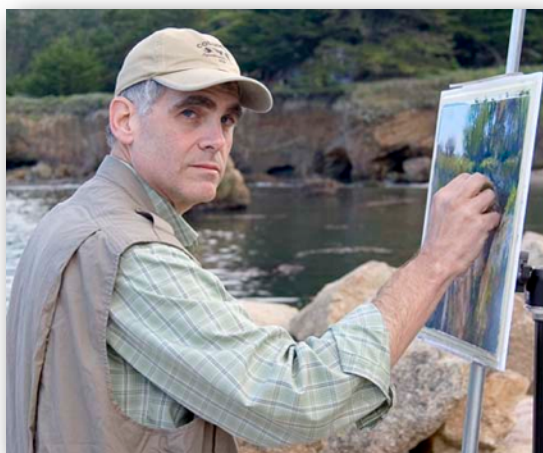
☐ Portrait  
☐ Landscape  
☐ Figure  
☐ Abstract  
☐ Still Life  
☐ Other \_\_\_\_\_

**\*If you have any questions, contact Karen Stombaugh, LCPS membership chair at: 952-473-2344 or k.stombaugh@mchsi.com**



Once again...  
Lake Country Pastel Society  
presents a workshop with a  
nationally renowned Master Pastelist

~ Richard McKinley ~



~ Pastel Painting in Studio- "Underpainting Possibilities" ~

Wednesday- Friday, August 20-22, 2014  
at the New Brighton Family Service Center.

*It will be a fun and freeing workshop, exploring new ways to begin our paintings working indoors with Richard. He is a very knowledgeable and entertaining instructor and I know we will have a great time painting together this coming summer.*

*The workshop is full and we are forming a waiting list. Feel free to contact us with any questions.*

*Keep on painting!*

*Lisa Stauffer and MaryAnn Cleary, LCPS Workshop Chairs*

*[lksart@aol.com](mailto:lksart@aol.com) and [maryann@maryanncleary.com](mailto:maryann@maryanncleary.com)*

# LCPS 2014 Calendar

**TIMES:** 5:30 LCPS board meeting  
all are welcome  
7:00 Member meeting begins

JAN 14 LCPS board & member meetings  
FEB 14-16 LCPS Still Life Workshop  
FEB 15 DEADLINE for newsletter  
MAR 11 LCPS board & member meetings  
APR 15 DEADLINE for newsletter  
MAY 13 LCPS board & member meetings  
JUN 15 DEADLINE for newsletter  
JUN 19 Burnsville Exhibit  
JUL 8 LCPS board & member meetings  
AUG 15 DEADLINE for newsletter  
AUG 20-22 Richard McKinley Workshop  
SEPT 9 LCPS board & member meetings  
SEPT 13 Frameworks Gallery Exhibit  
OCT 15 DEADLINE for newsletter  
NOV 11 LCPS board & member meetings  
DEC 10 DEADLINE for newsletter

The LCPS Mentoring Program will kick off in 2014. If you're interested, please contact Heather at: [hultgren4@msn.com](mailto:hultgren4@msn.com)



Map to our Meeting

## In case of bad weather...

LCPS will email members by noon the day of the meeting and will contact people who don't have email. If you have questions, call Patricia Duncan at 612-644-6798 or email her at: [mpatriciaduncan@aol.com](mailto:mpatriciaduncan@aol.com).

*Mission Statement: We seek to unite artists from beginner to professional who are interested in the pastel medium and to serve their needs by encouraging artistic growth and development through education and sharing. We also work to create public awareness of pastel as a unique and beautiful art form.*