



# *Dust in the Wind*

LAKE COUNTRY PASTEL SOCIETY

MARCH 2015

## **Board of Directors**

### **President:**

Bruce Koprucki  
952-448-7559

### **Vice President:**

open

### **Treasurer:**

Patricia Duncan  
612-448-7559

### **Secretary:**

open

### **Program Co-Chairs:**

Carole Rowley  
763-757-2949  
Rachel Heeren  
952-239-9108

### **Exhibit Chair:**

open

### **Workshop Co-Chairs:**

Mary Ann Cleary  
763-552-8650  
Cynthia Kath  
651-297-8558

### **Public Relations:**

Michelle Wegler  
218-724-8010

### **Membership Chair:**

Karen Stombaugh  
952-4732344

### **Historian:**

Barb Björnson  
651-636-1427

### **Temporary Newsletter:**

Barb Björnson

## **Greetings!**

Thank you for your confidence, support, and patience as I begin my two-year term as your LCPS President! I'm grateful for the leadership and service of past officers, committee chairs, and members that have moved our society forward to the present. Some special thanks:

to **Pat Duncan**, for her leadership as President over the past two years; to **Heather Hultgren** (Secretary) and **Eileen France** (Exhibits Chair) for remaining briefly in their offices while we recruit replacements; and to **Barb Björnson** for filling in as Newsletter editor as we seek to fill that vacancy. With that said, our Society needs four volunteers **now** to serve two-year terms as Vice President, Secretary, Exhibits Chair, and Newsletter Chair. Talk to me (or them) if you are interested!



While some have the challenge and opportunity to share as leaders within our society, we **all** have a similar challenge and opportunity to share our talents as pastelists--and artists--with those outside it. Clint Watson wrote on this theme in his "Fine Art Newsletter" article of August 30, 2011 titled "Shared Art Enriches Life". In his article, Watson described the surreal process by which others—and we—are enriched by the art we create and share.

Rather than repeat or paraphrase his article, here are four examples from my enriched life:

- In 1987, newly self-employed, I drew and broadcast a pen-ink Christmas card of our new Minnesota residence to family and friends. My sixth grade teacher replies...and remains in touch at Christmas ever since. A cousin responds some months later...with a commission to prepare an illustrated map to his wedding reception. Three years later, a card recipient commissions a commemorative pen-ink rendering and prints to celebrate a retiring executive.
- A pen-ink rendering of a windmill at a relative's Nebraska ranch is treasured...and years later engraved on his headstone.

(-continued on page 2)



- Another pen-ink Christmas card, this time in 1991 of my mother's Michigan farmstead sent to her as well as relatives and friends. She frames the original for the master bedroom. In 2012, one of my aunts recalls the Christmas card and asks permission to engrave the farmstead scene onto the headstone for her recently-deceased husband's grave. (Oh, but would I **please** first turn the barn to face the "right way", and would I remove a fence from the rendering that was never there? After all, they **lived** there most of their lives.)
- Finally, a pencil sketch of an unruly boy given to the boy--and his grateful dad—transforms a cold, somber, stranger-filled waiting room into a space filled with warmth, delight, and friendship.

Granted, these are not pastel examples, although I've experienced some while painting pastels or drawing plein air. I don't always know—WE don't always know--if or when there is or will be any enrichment. It may happen instantly, months later, years later, or never. We can only follow our hearts, risk...and share.

So...here are three questions: Are we practicing artistry...or ministry? How have **you** shared **your** art...and how has it enriched your life and the lives of others? Finally, how can we enrich the lives of others—and our lives—with our art in the coming days, weeks, months, and years?

**Shared Art Enriches Life.**

Regards,  
**Bruce Koprucki**  
**LCPS President**

## ~ **WELCOME** ~ **New Members**

Cheri Ginsburg

Randa Schuster

**Art Weeks**

## **New Member: Art Weeks**

I am a new member of LCPS. News items that may be of interest:

1. I currently have a show up at Dunn Brothers coffee in Excelsior, MN consisting of oil, watercolor, acrylic and several pastel works.
2. I have 2 oil on canvas paintings for sale at the U of M Arboretum in the winter show through the Wilcock Gallery in partnership with the Arboretum.
3. I am a retired Architect residing in Chaska, MN, and have painted and drawn for the last 30 years, proficient in several mediums including oil, acrylic, pen & ink, charcoal, watercolor, and pastel. I like to work on paper or textured board when painting pastels, and include plein air and studio experiences to depict the figure and landscapes. I regularly attend sketching sessions at Old Town Artists in St. Paul, MN.

Respectfully Submitted,  
**Art Weeks**, Chaska MN



### ***Spray Fixative***

There is a new fixative spray out for those who may use one upon occasion. It is **Spectra Fix**, available at Blick art supplies. It is Degas pastel fixative. It is a hand spray, all natural, and odor free. It helps maintain chromatic control, dries to an invisible matte finish. You can brush while still wet to create washes with pastel. It may not be for the purists at heart, but just sayin'.

**Sher Leksen**

### ***Question for LCPS members:***

Now that **Wallis paper** seems to be unavailable, I would be curious what the members are using.

**Duane Graham**

Could members answer this question from Duane in the next newsletter or send an email to:

dgraham831@aol.com

Thank you

### ***January Meeting's Presentation***

At our January meeting our new President, Bruce Koprucki, did double duty. He presided over the evening's regular meeting obligations and then went on to present a two-part demonstration on Perspective, as put to use by artists and illustrators.

Discussed and drawn out were subjects including Proportional Convergence, three different kinds of perspective, and the use of grids and other methods by which to achieve one's compositional goals.

Bruce drew several large sketches to help illustrate his points, including how to create a "cube" matrix and how putting a figure in to a painting can aid in finding the vanishing point on the horizon.

It was a detailed and very helpful presentation, and those of us lucky enough to be in attendance came away with many more perspectives to ponder.

**Susan Rowe**

### ***Volunteer opportunities:***

Karen Stombach is looking for a LCPS member volunteer who can either co-chair the **Membership** chair with her, or at least help her! Being able to attend some of our member and board meetings would be helpful, plus ability to work with EXCEL.

We need a **Secretary** to take notes at the board meetings. 2 year term

**Vice President**- 2 year term

**Exhibit Co-Chairs** - 2 year term

**Thank you**  
to LCPS members who are  
volunteering and have  
volunteered.  
The pastel society  
appreciates  
**ALL** that you do.



# Programs

## MARCH

Our March meeting has been scheduled for **Tuesday March 17th at 7:00 pm** instead of our regular second Tuesday.

Elizabeth Mowry will be doing a demonstration for our society as part of her workshop.

We look forward to the presentation by Elizabeth Mowry. She will be painting an atmospheric landscape for us, and talking with us about pushing our paintings beyond what is there.



## MAY

The May 12th meeting will be a small group critique session. We'll break down into small groups to view our fellow member's paintings. It should be an informal and friendly way to get feedback on our paintings. Everyone please bring one or two unframed pastels that are underway or finished. We'll have a large group discussion at the end of our viewing and share comments on what is important when we critique our own pastels. We would like to have people share what planning they do before starting a pastel.

We will also have Heather Hultgren speaking to us about the participants experiences this past year in the mentoring program. We hope to have many of those involved in the program at our meeting.

## JULY

Our July 14th meeting will be the annual paint out and potluck picnic dinner. We will be having it at the Long Lake Regional Park, just around the corner from the location of our regular meetings. The picnic shelter near the beach has been reserved for the whole day, come around 1:30 and enjoy the park and painting time. A short board meeting will be at 5:30 with everyone welcome, followed by potluck and viewing the days paintings.



# Exhibits

## LCPS members have two opportunities to exhibit this year.

The first will be at the **Hudson Hospital and Clinic** in Wisconsin from April 15 through July 12. They will have a reception for exhibitors on May 8 from 6 to 8.

Members may submit one painting. Images of children or mothers and babies would be especially welcome since the exhibit will be in the OB/Family area.

The drop off dates are: Monday, April 13, from 4-7pm or Tuesday, April 14 from 9am-12noon.

Members who plan to enter this exhibition are requested to send their entry information to Michelle Wegler by April 1. Her e-mail address is <[michelle.wegler@gmail.com](mailto:michelle.wegler@gmail.com)>

Please include the following:

Name

Title

Year

Size \_\_\_\_\_ H \_\_\_\_\_ W

Price \_\_\_\_\_ Insurance value if NFS \_\_\_\_\_

Phone

This information will also need to be added to the back of your artwork.

Our judged exhibition will be held at the **Red Wing Depot Gallery** from August 28 through October 27. More information and a prospectus will be included in the next newsletter and on our website.

## From the Exhibition Committee:

We all like having the opportunity to exhibit our pastel paintings and our society needs your help to plan future exhibits.

You can assist by suggesting show venues, recommending a judge for juried shows and helping with these contacts. We also need helpers during some exhibits to assist in hanging a show, or helping with check in and check out. Someone is needed to accept digital entries prior to the show and prepare a list for the exhibition. Most of these opportunities require only a few hours a year, but the rewards contribute to the continuation of our high quality shows. And, as a reminder, anyone who helps, will have their name added to our regular meeting drawings for "Thank You" gift cards from some of our art supply vendors.

MOST OF ALL WE NEED SOMEONE WHO CAN COORDINATE OUR EXHIBITS. Everything is planned for 2015, and we are now scheduling for 2016 - 2017. I will continue to help anyone for this year's exhibits. Your help is urgently needed.

Call Eileen France at [952-431-9753](tel:952-431-9753) or e-mail me at [franceart@earthlink.net](mailto:franceart@earthlink.net)



# Workshop

**BARBARA JAENICKE OPA, PSA, IAPS-MC**

**[www.barbarajaenicke.com](http://www.barbarajaenicke.com)**



Daybreak Shadows by Barbara Jaenicke ©

Pastel 8 x 10 inches

Barbara is a Signature Member of the Pastel Society of America, a member of the IAPS Master Circle, a Member of Excellence in the Southeastern Pastel Society, a Signature Member of the Oil Painters of America, a member of the American Impressionist Society, and is a popular workshop instructor throughout the US.

## **The Pastel Landscape Simplified - 3-day Workshop**

Barbara's workshops focus on simplifying and interpreting the landscape. She will cover various methods and techniques that will help you look past the overwhelming details of the landscape, especially in the beginning stages, and compose a well-edited painting. Students will also work on specific practice exercises to improve their pastel stroke application with the goal of *making every stroke count*. Each day of the workshop will begin with a demonstration followed by plenty of individual help at the easel for the remainder of each day. All levels are welcome.

**Workshop is full.** Names can be taken for a waiting list. Call or email Cynthia or MaryAnn leave a message with your information.

For more information on the workshop and registration please go to Lake Country Pastel Society website. [www.lakecountrypastelsociety.com](http://www.lakecountrypastelsociety.com)

Workshop co-chairs: **Cynthia Kath**: 651-297-8558    **Mary Ann Cleary**: 763-552-8650



# Opportunities

## OPM Exhibit Call for Entries:

LCPS member Christine Tierney is the current President of the Outdoor Painters of Minnesota (OPM). Christine relayed this call for entries to the upcoming OPM exhibit and sale: Outdoor Painters of Minnesota will be exhibiting at the beautiful gallery of the Ames Center in Burnsville, MN, during August & September of this year (2015). We would like to extend an invitation to you and members of your organization to join us in the exhibit!

Qualification for participation is that you must be current paid member of Outdoor Painters of MN, and the works displayed need to be Plein Air related (please read the prospectus carefully.)

For the prospectus and membership form please contact Christine Tierney. 612-210-3377.

[www.outdoorpaintersofminnesota.org](http://www.outdoorpaintersofminnesota.org)

Participation is limited to 52 artists, first come, first served.

## Lisa Stauffer spring workshop.

**Still Life In Pastel**, at the **Grand Marais Art Colony** will be held April 11-12 & 13 (optional third day). Full info at [grandmaraisartcolony.org](http://grandmaraisartcolony.org), or 218-387-2737.

We have a great time learning together in this class. Come up and join us! Feel free to contact me if you have any questions about this class. 218-728-6046 email: [lksart@aol.com](mailto:lksart@aol.com)



## The Red Wing 2015 Plein Air Art and Music Festival

The Festival will be held June 22-27 in and around Red Wing.

There is usually an opening reception at the gallery for paying guests and collectors on Friday evening. Then, on Saturday morning is the Quick Paint for 2 hours. It is a very fun and enjoyable week and the staff does such a great job! They will apparently have more posted on the event sometime yet this month. ([www.redwingartsassociation.org](http://www.redwingartsassociation.org))

**Pat Duncan**



# Member's News

## Heather Hultgren

is proud to announce that "Swirling Leaves" was juried into the *Seeing God* Juried Exhibit of Sacred Art at the St. Paul's Monastery Gallery. The Exhibit runs until March 6 and is located at St. Paul's Monastery, 2675 Benet Road, Maplewood, MN 55109.



**Sandra Dowd** received another \$10,000 Artist Initiative Grant from the MN State Arts Board. She will experiment with new color palettes paying particular attention to their emotional impact and then do a series of self-portraits focusing on aging.

Congratulations Sandra!

**Michelle Wegler's** painting, *Golden Cattails*, was juried into the 2015 Arts in Harmony International Juried Art Show. The exhibit is held at the Sherburne County Government Center in Elk River MN from Monday, February 2 to Thursday, March 26, 2015. Of special note is that Michelle's pastel is framed using museum acrylic. The museum acrylic is non-glare/anti-reflective, non-static, and more durable than glass, making it possible for Michelle to safely ship her painting to the show from Duluth. Thanks to being awarded a grant, she was able to purchase this material. This activity is made possible by the voters of Minnesota through grants from the Minnesota State Arts Board and the Arrowhead Regional Arts Council, thanks to a legislative appropriation from the arts and cultural heritage fund and by a grant from The McKnight Foundation.





## .....continued Member's News.....

**Fred Somers** was awarded  
Pris de Pastel in the  
IAPS web show for the painting:  
"Blooming Spring"

The same painting was awarded  
Honors in the landscape division of  
Pastel 100 in  
Pastel Journal Magazine.



Three of Fred's paintings have been selected for their permanent collection by the Minnesota Marine Art Museum in Winona, Minnesota. The paintings will be on view with other recent acquisitions when the feature exhibit of works by Winslow Homer opens April 16 from 5-7 p.m. For more information about the museum visit: [mmam.org](http://mmam.org)

A solo exhibit of Fred's paintings: "Submitting to Natural Beauty" opens March 9 at the Benedictine Center, 2675 Benet Road, Maplewood, MN. The Center is free and open to the public 9 - 6 daily and the exhibit is on view through May 15.

Thursday March 12, 7-9 p.m. Fred will present a guided reflection on how art reflects spiritual life.

For more information, go to [www.stpaulsmonastery.org](http://www.stpaulsmonastery.org) and follow the Benedictine

Center Link, or call [651-777-7251](tel:651-777-7251) or e-mail [benedictinecenter@stpaulsmonastery.org](mailto:benedictinecenter@stpaulsmonastery.org)



**Karen Stombaugh** invites you to the Lake Minnetonka Studio Tour, May 2nd, 10 am to 6 pm and May 3rd, 10 am to 5 pm.

Celebrate Spring with a visit to the artist's open studios. You will discover a wide variety of unique and inspired styles and mediums, including of course, pastels!

See [www.LakeMtnka-StudioTour.com](http://www.LakeMtnka-StudioTour.com) for map and details!



## .....continued Member's News.....

**Lisa Stauffer** went to Camp Menogyn in Minnesota's amazing Boundary Waters Canoe Area to paint with some hardy and adventurous folks at the end of January, it was cold (it is winter!) but with daytime temperatures varying between 24 to -10 it was a lot warmer than the previous time I made it up to camp. Cheryl LeClair-Sommer and Michelle Wegler were also at winter camp. We have a great time up there, painting the day away, then singing, playing games and talking with other artists after dark, the camaraderie enriches each of us. Think about roughing it along with us next year!



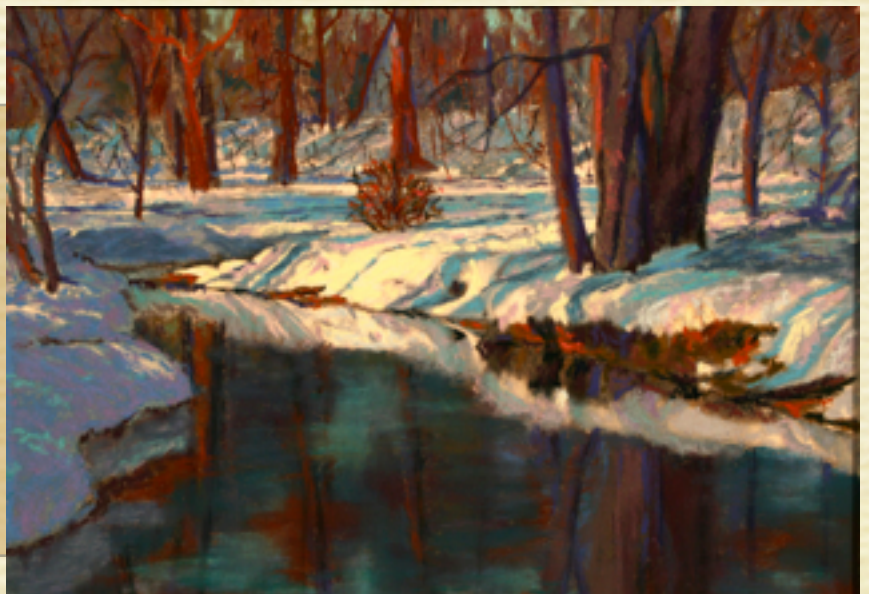
I went from camp down to Mineral Point, WI for the first **Paint The Point- Winter** Plein Air event- from Feb 4-6 we painted the township and each of us (19 painters) had two paintings in the galleries for judging and sale.

I won **Best In Show** for my painting, Winter Creek!



**Rita Corrigan** was juried into the **WARM Portals and Passages** show at the Phipps Center for the Arts February 27 - April 5. The title is "**Autumn Inspiration**", soft pastel over watercolor.

**Eileen France's** painting,  
"January Reflections"  
won  
"Best of Show"  
at the  
Burnsville Visual Arts Society  
show  
Art Fete 2015.





## .....continued Member's News.....

### Healing Arts Program Exhibition: Linda Ricklefs Baudry February 2<sup>nd</sup> through April 12<sup>th</sup> 2015

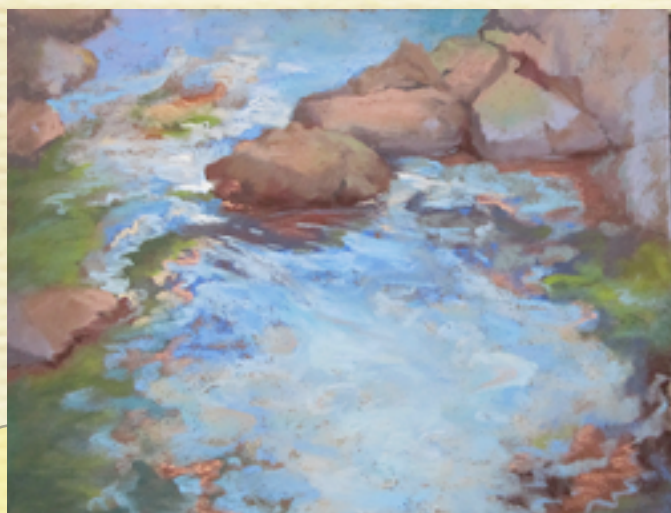
An exhibit of recent work by Linda Ricklefs Baudry will be on display in the Clinic/Administration area of Hudson Hospital as part of the Healing Arts Program.

Through a unique partnership with The Phipps Center for the Arts, original artworks are selected for their ability to inspire, reduce stress and create diversion,

and are installed throughout the hospital campus. Linda Ricklefs Baudry plays with rich vibrant colors to explore emotional spaces, using imagery loosely based on nature. Her regular studio/gallery space is in the Northrup King Building in NE Minneapolis.

The exhibit is free of charge and open to the public.

**Public Reception: Friday, February 13<sup>th</sup> 6:00-8:00 pm.** Refreshments will be served.  
Hudson Hospital, 405 Stageline Road, Hudson, WI 54016



**Cheryl Leclair-Sommer** and **Michelle Wegler** will be exhibiting paintings in their show, "Water, Water, Everywhere" at the James Wegner Art Gallery in Austin MN. The exhibit will run from March 26-April 23, 2015.

Closing reception and Artists' Talk will be at 1:30 on April 23.

*Water, Water, Everywhere* portrays the power, gentleness, and presence of water around us. From fierce rivers, heavy rain to bubbling streams, morning dew and quiet lakes, the shape of water shapes our days, our moods, our well-being. Award winning artists Michelle Wegler and Cheryl LeClair-Sommer share the shapes of Minnesota's water country in this exhibit in pastel and oil.



# Arts in Harmony Exhibit

Elk River Arts Alliance



**Rita Corrigan**

"Superior Shore"

Lake Country Pastel Society Award



**Sher Leksen**

"Unfinished Business"

Second Place Pastel Award



**Lisa Stauffer**

"September Aspen"

Best pastel Award

**Melody Allen**  
**Laura Irwin Schack**  
**Michelle Wegler**

are also in the exhibit.

( \*If I have forgotten other members,  
my apologies. Editor)

The show is up through March at the  
Elk River Government Center.



**Pat Duncan**

"A Rich Diversity of Wetlands"

Best River Representation Award

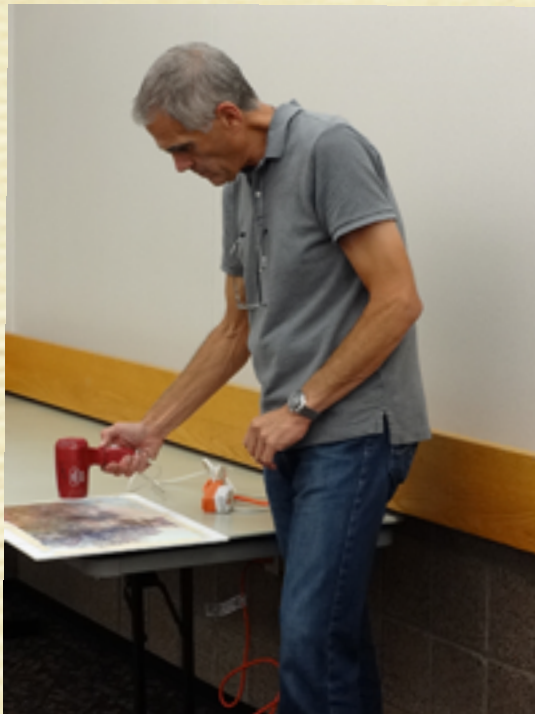
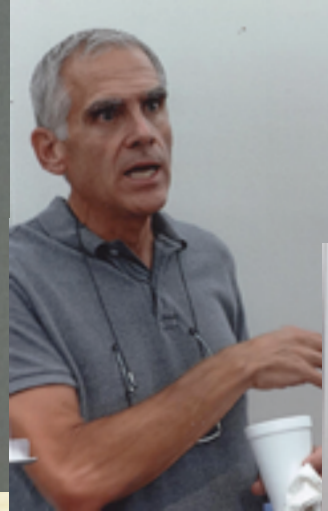


## *Richard McKinley Demonstration in August 2015*

What a blessing to have had this demo evening with **Richard McKinley**! He is a master, a teacher, a stand up comedian, as you can see. These are a few of the many faces of his lively conversation. After all of this, he produced a stunning pastel within three hours. What can you say, except WOW. As well as, **THANK YOU Richard**. Just one of the great events of 2014 for LCPS.

**Sher Leksen**

Thank you Sher for the great photos!





## Lake Country Pastel Society Calendar 2015

### March 17

5:30 Board Meeting  
7:00 Elizabeth Mowry Demo  
for Members

### March 16-20

Elizabeth Mowry Workshop

### April 15

Deadline for newsletter

### May 12

5:30 Board Meeting  
7:00 Critique Member Meeting

### June 15

Deadline for Newsletter

### July 14

Board Meeting 5:30  
approximately 1:30 Potluck

### August 15

Deadline for Newsletter

### Sept 8

5:30 Board Meeting  
7:00 Member's Meeting

### October 15

Deadline for Newsletter

### November 10

5:30 Board Meeting  
7:00 Member's Meeting

### December 10

Deadline for Newsletter



### In case of bad weather.....

LCPS will email members by noon the day of the meeting and will contact people who don't have email. If you have questions, call Bruce Koprucki 952-448-7559 or email:

Bruce Koprucki  
<chaparralwoodart@gmail.com>



### Mission Statement:

We seek to unite artists from beginner to professional who are interested in the pastel medium and to serve their needs by encouraging artistic growth and development through education and sharing. We also work to create public awareness of pastel as a unique and beautiful art form.