



# Dust in the Wind

March 2018

## LCPS Mission Statement

We seek to unite artists from beginner to professional who are interested in the pastel medium and to serve their needs by encouraging artistic growth and development through education and sharing. We also work to create public awareness of pastel as a unique and beautiful art form.

## From the President



**D**aylight and darkness: we in the Midwest live in the midst of long nights, long days and long shadows.

Light reveals form, and color is the revelation of light. All of us use those tools while

creating our artworks. The workshop LCPS is sponsoring with Doug Dawson in May, 2018 brings an unparalleled opportunity for us to study with an international master artist who truly knows his way with light and color in the darks. His palette in his night scenes uses the grey scale with restraint to define form in the darkness. He creates beauty in the shadows of his paintings and helps students see and learn to work in those mysteries of their own art. Look online for more examples: [www.dougdawsonartist.com](http://www.dougdawsonartist.com) or find him on YouTube, in a recent issue of Southwest Art Magazine, or in his books.



*Snow on 16th St., Doug Dawson*

Contents	Page
January Meeting Report	2
Doug Dawson Workshop Info	4
Member News	6
Volunteer Opportunities	10
LCPS Calendar	10
March and May Meeting Info	11

2018 has begun with a flurry of amazing open doors. The American Swedish Institute expanded our Invitational Exhibit there and welcomed us to a show for all members. Take another opportunity to visit their museum, both to see our exhibit and to enjoy the works of earlier Swedish painters. Look especially for how they, too, worked in the shadow areas of their paintings. The LCPS show is on view through March 4. Thanks to Curt Pedersen and the ASI staff for their warm welcome, hard work and delightful opening reception.

The Minneapolis StarTribune showcased pastel painting and Lake Country Pastel Society with a feature article by Alicia Eler, visual art critic and reporter. She and their photographer joined our artists at the January Paint-In. Linking photos and interviews with several LCPS members with the ASI Exhibit, the article brought the unique beauty of pastels to the wider arts community. Hurray! — and let's keep spreading the good word. Read the article here: [www.startribune.com/pastel-power-a-minnesota-paint-in-shows-these-crayon-like-colors-aren-t-just-for-kids/471778603/](http://www.startribune.com/pastel-power-a-minnesota-paint-in-shows-these-crayon-like-colors-aren-t-just-for-kids/471778603/)

*Continued on page 2*

Continued from page 1

Looking forward : LCPS is gifted with many accomplished teachers who will share their knowledge and encouragement at the group critiques during our March 13 meeting. It's a great opportunity to pick up a few tips for making our May Frameworks Show entries the best ever. Our May workshop presenter, Doug Dawson, is judge for that exhibit. While there is no need for photos to enter this show, Heather Hultgren will demonstrate some photo editing apps that are available to resize and rename images for show entries — an important tool for all artists. Bring your phone if you use it to photograph your artwork.

*Join the fun! Paint what you love, Walk in the Light!*

Fred Somers

## January Paint-In Meeting



Though it was a little below zero outside, January 13 saw our indoor meeting room filled with easels, pastels, and edible treats for our annual Paint-In.

Approximately eighteen members participated and former LCPS President Bruce Koprucki made a surprise visit, courtesy of his son Bryce! As an extra bonus , a number of artists were interviewed and their work photographed for an article about the LCPS that was later printed in the Minneapolis Star-Tribune newspaper's Arts Section! [Click here to read the article.](#)

We painted from 11 A.M. till 1:30 P.M., and then broke for our meeting. Topics covered included the pastel exhibition at the Swedish Institute, our group critique scheduled for our next meeting, and whether members would be interested in attending a workshop dealing with preparing images used for juried shows and art festivals.

Mentioned too, was the upcoming week-long workshop with the well-known pastelist, author, and instructor Doug Dawson. Fred Somers spoke of the deep wisdom and information Mr. Dawson shares during the days attendees spend learning. He emphasized that whatever your level as a pastelist, his workshops are very worth while.

Next, Sher Leksén gave a short talk, and presented three of her award-winning pastel landscapes. The three shown featured portions of buildings with alleys as points of interest as well.

*Continued on page 3*

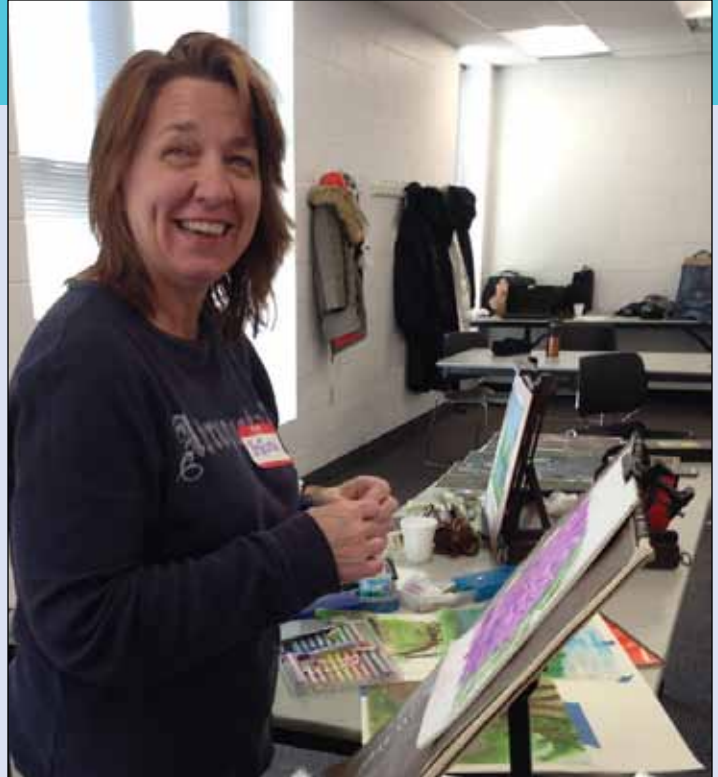


Continued from page 2

Lastly, we were treated to an in-depth demonstration of how Fred Somers mats and/or frames his finished pastels. Fred worked through a whole process, while other members offered suggestions that they find helpful.

Here are just a few notes:

- Commercial "Plein Air Frames" are good for oil paintings, but are not suitable for pastels.
- One can use framers tape to run tape around glass, pastel, and backing to create a solid piece, with glass directly on top of your pastel painting.
- Spacers can be either purchased or made from foam core or other materials.
- YouTube has good videos focusing on placing screws and wire correctly for exhibition hanging.



- Pay attention to how wires are wrapped and that they are knotted the correct way for best security.

There were many other suggestions — perhaps other members can write in with own .

Now I am sure many of us are looking forward to driving to our evening meetings in daylight soon. Just a few more weeks!

*Keep painting!*  
— Sue Rowe

*Dakota Art  
Pastels*  
**your pastel specialist!**

**888.345.0067**  
**WWW.DAKOTAPASTELS.COM**



# Combination Studio Landscape and Plein Air Workshop with Doug Dawson — May 7–11, 2018

**D**oug Dawson is recognized as a “Master of Pastel” by the Pastel Society of America. He wrote “Capturing Light and Color in Pastel” published by North Light and is included in over 40 other instructional books and magazine articles on pastel painting. He is a member of the Master’s Circle of the International Association of Pastel Societies and was the Pastel Society of America 2008 HALL OF FAME HONOREE.

The workshop will be held at: **New Brighton Family Center**; 400 Tenth Street N. W.; New Brighton, MN 55112

## Topics covered in the workshop include

- Black & white and color thumbnails.
- The three basic patterns of successful paintings.
- How to create the illusion of depth in landscape.
- The principle of the common color.
- The underlying concept of color harmony.
- How to solve color problems as you paint.
- Some basic approaches to underpainting.
- Using organizational shapes.
- How to set the mood.
- The 4 skills that characterize a mastery of painting.

## Topics covered in the Plein Air segment

- How to find good plein air subject matter.
- How to overcome changing light and weather conditions.
- How to complete a painting in a short window of time.
- The four different types of light.

There will be a lot of individual help. Each day will end with a critique.

The tuition is \$625 for the five day course. Workshop dates are May 7–11, 2018. Applications must be submitted with a deposit of \$100 (non-refundable). Balance must be received by April 1, 2018. Prompt registration is preferred to guarantee your space in the workshop which is limited to 20 participants. Cancellation after April 1 will result in forfeiture of the entire fee unless the space can be filled



*Marsh Tree, Doug Dawson*



*Eagle Nest Island, Doug Dawson*

with a student from the wait list, in which case a \$150 cancellation fee will be assessed.

To register, fill out the following form and mail it with your deposit. The first 3 days of the workshop will be Studio Landscape and the last 2 days will be Plein Air (weather permitting). Both the Studio Landscape and the Plein Air segment will begin with a demonstration.

— Eileen France, LCPS Workshop Chair  
Becky Jokela, Workshop Co-Chair

Initial Registration Form

DOUG DAWSON WORKSHOP — LAKE COUNTRY PASTEL SOCIETY — May 7–11, 2018

Name \_\_\_\_\_

Address \_\_\_\_\_

\_\_\_\_\_

Phone \_\_\_\_\_ Cell \_\_\_\_\_

E-mail \_\_\_\_\_

Amount enclosed  \$100 Down Payment or  \$625 Full Payment

Make check payable to LCPS and mail to: Eileen France, LCPS Workshop  
13024 Garrett Lane  
Apple Valley, MN 55124

DOUG DAWSON WORKSHOP

Return this portion with balance due by April 1, 2018

Name \_\_\_\_\_

Phone \_\_\_\_\_ Cell \_\_\_\_\_

E-mail \_\_\_\_\_

Amount enclosed \_\_\_\_\_ (\$525 due if initial payment was \$100)

Make check payable to LCPS and mail to: Eileen France, LCPS Workshop  
13024 Garrett Lane  
Apple Valley, MN 55124

# Member News

**Welcome to new members:** Judith Bagan, Kim Kang, Kelly Kastner, Nancy Kolacke, Mary McLeod, Anita Mitlyng, Denise Presnell, Joan Reynolds, and Mary Riche



## ASI Member Show

On a snowy January 31 evening, the Community Gallery at The American Swedish Institute (ASI) was warmed by color-filled pastel paintings. The Artists' Reception, hosted by ASI, opened the Members' Exhibit which is on view through March 4.

ASI says "This exhibition of pastel art by members of the Lake Country Pastel Society raises awareness of pastel as a unique and beautiful art form, demonstrating the highest levels of the artistic expression in landscape, cityscape and portraiture. The American Swedish Institute's Community Gallery Program features the work of Minnesota artists and art collectives. As an organization committed to connecting globally and engaging locally, ASI also acknowledges the varied and vibrant arts communities locally and regionally."

LCPS is greatly honored to have been included in this wonderful program in such a grand venue. Be sure to enjoy LCPS art and all of the other splendid art and architecture at the American Swedish Institute.

*Fred Somers*



**Art Weeks** has a pastel accepted into the 44th annual Northern Lights Show, the regional show for Minnesota and Wisconsin artists, at the White Bear Center for the Arts.

Show dates are March 5th through April 6th.

*Summer Dockside, Art Weeks*



Pond Pattern, Lisa Stauffer

**Lisa Stauffer** won First Place Pastel at Arts In Harmony International Juried Show for "Pond Pattern. The opening was last February 17 and the show will be on display at the Hopkins Center For The Arts until March 16, 2018.

**Sher Leksen** won Second Place Pastel for "Guanajuato"

**Joanne Meierhofer** won Third Place Pastel for "Superior Surf"

I noticed other LCPS member pieces in the show including **Diane Gronewald, Linda Ricklefs-Baudry, Laura Irwin Schack, Karen Stombaugh, and Michelle Wegler**. Excellent showing LCPS!

**A heads up for members** — a chance to get your favorite Unison colors. Lisa Stauffer will be bringing more of the remaining close-out Unison from Wet Paint to our March meeting. Sales will be cash or check only (cash is best)! There is nearly the complete set with duplicates available. You will be able to pick individual colors at the meeting.

### News from Lisa Stauffer

I am teaching again at the Grand Marais Art Colony again, consider coming to join me and other fun pastel painters for:

**Still Life In Pastel** — April 4-5, 2018

<http://grandmaraisartcolony.org/workshop.cfm?wid=753>

**Advancing In Pastel** — April 6-8, 2018

<http://grandmaraisartcolony.org/workshop.cfm?wid=754>



Guanajuato, Sher Leksen

## Member News continued

**Fred Somers'** painting "Water Music II" will be showing at the International Association of Pastel Societies exhibit in Tacoma, Washington.

As juror for the Pastel Society of New Mexico, Fred Somers' painting, "Dancing Through Time" will be showing at their international exhibit in Santa Fe.

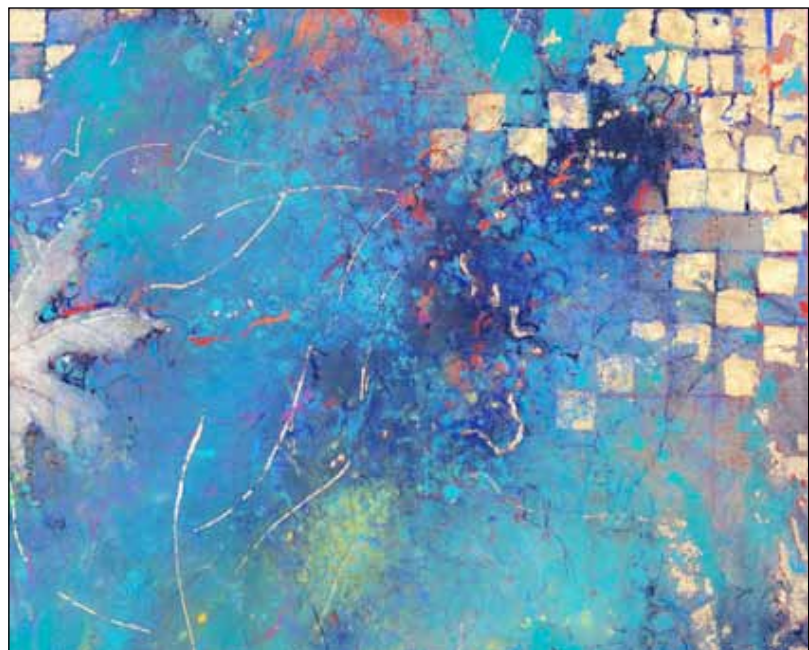
He was just notified that his painting First Snow, Golden Grass was accepted in the 27th National Oil Painters of America Show in Steamboat Springs, CO.



*Water Music II, Fred Somers*



*First Snow, Golden Grass, Fred Somers*



*Dancing Through Time, Fred Somers*



*The Girls in the Grass, Sue Rowe*

Member **Sue Rowe** of Stillwater, Minnesota, was awarded a Wisconsin State Exhibition Award for her pastel, "The Girls in the Grass." This piece was exhibited at the River Falls Library, River Falls, Wisconsin, at the regional Wisconsin Rural Arts Program show. The painting is now eligible to be shown in Madison, Wisconsin later in 2018.



For the love of Art  
Grand Hill Gallery presents  
4 Minnesota Artists



Sue Wipf  
Patricia Duncan  
Christine Tierney  
Michele Combs

**OPENING RECEPTION**  
THURSDAY FEBRUARY 15, 2018 6:30-9:00

## News from Pat Duncan

**Christine Tierney, Sue Wipf, Michele Combs & I** have a show going on until March 31st at the Grand Hill Gallery in St. Paul. The show has nice representation of both oil & pastel paintings.

I am honored to have been accepted into the American Impressionist's Society 2nd Small Works show that is being hosted by the Greenhouse Gallery in Cincinnati starting March 23rd – April 21st.

I was juried into the Telluride Plein Air event in Telluride, Colorado. It begins July 27th – July 5th. We paint for several days throughout Telluride and they have a show/sale the last 3 days which ends on July 5th. There is a wonderful 4th of July parade celebration that happens during the event! People come from all over the states & beyond to see this great community event.



*Spiritual Healing, Comfort and Solace, Patricia Duncan*

“Creativity is  
intelligence  
having fun.”

—Albert Einstein

# Something to Ponder

Volunteers are important to the operation of LCPS and many of us have or had experiences and careers from a variety of fields. Here are some of the volunteer opportunities available:

- The exhibit committee involves finding venues, writing proposals, and hanging shows. Writers are always welcome for newsletter articles.
- If you are someone who is able to do a demonstration or a talk, the programming committee would like to hear from you since they plan the activities for the meetings.
- The workshop committee invites professional pastel artists to come to the Twin Cities, handle the registration, decide on the type of venue needed for the class, provide refreshments, and help the artist navigate the area.

- Those of you who are social media savvy may want to think about helping in public relations.
- There are members interested in being professional artists and would like the advice of an experienced professional. You may want to consider mentoring someone.
- Some of our members do not drive or need a ride. If you see that they live in your neighborhood, or are along the way to the meeting, think about volunteering to pick them up.

When you fill out the membership application, don't forget the "How can you help LCPS?" section. Your name will be forwarded to the appropriate committee chairperson. And, *thanks to the members who have volunteered and are currently volunteering.*

*Karen Berning  
Membership Chair*

*"Volunteers do not necessarily have the time; they just have the heart."*

*— Elizabeth Andrew*

## Lake Country Pastel Society 2018 Calendar

### March 13

5:30 Board Meeting  
7:00 Member's Meeting

### April 15

Deadline for Newsletter

### May 8

5:30 Board Meeting  
7:00 Member's Meeting with  
Doug Dawson

### May 7-11

Doug Dawson Workshop



**Wet Paint**

1684 Grand Ave St. Paul, MN 55105  
[wetpaintart.com](http://wetpaintart.com)  
651-698-6431  
M-F: 10am-8pm Sat: 10am-6pm Sun: 12pm-5pm

## Up-coming Programs

### Board of Directors

**President**  
Fred Somers  
507-645-5031

**Vice President**  
Christine Tierney  
612-210-3377

**Treasurer**  
Connie Ludwig  
651-923-5047

**Secretary**  
Nancy Trask  
763-226-3589

**Program Chair and Mentoring Program**  
Heather Hultgren  
651-739-1329

**Exhibit Chair**  
Art Weeks  
612-859-0180

**Hospitality**  
Sher Leksén  
612-770-4310

**Workshop Chair**  
Eileen France  
952-431-9753

**Public Relations**  
Michelle Wegler  
218-724-8010

**Membership Chair**  
Karen Berning  
763-497-1875

**Historian and Newsletter**  
Carol Pruchnopski  
715-425-8101

### March Member Meeting Tips for Photo Entries and Small Group Critique

Tuesday, March 13, 7-9 p.m.

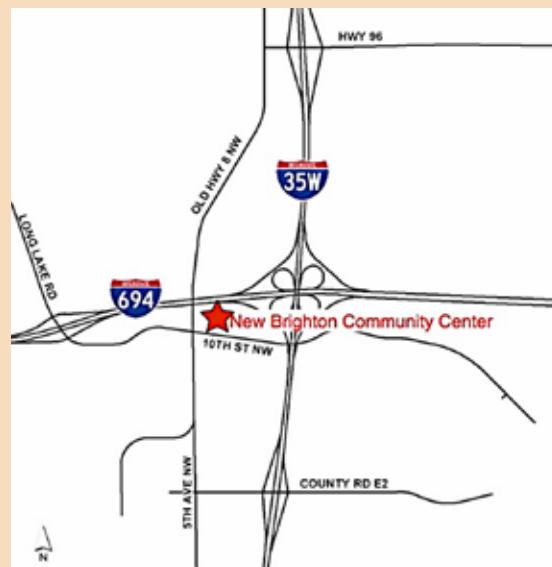
Join us for an informative evening of learning a few tips and resources for pastel show photo entries, as well as our annual Small Group Critique! Please bring one or two unframed pastels that are underway or finished. We will break into small groups to view each other's paintings. The evening will be informal, friendly, and a way to get feedback on your work. Hope you can join us!

### May Member Meeting Doug Dawson Demo

Tuesday, May 8, 7-9 p.m.

You don't want to miss this night! Doug Dawson, artist, teacher, and author, will be sharing a demo with our LCPS members May 8. Doug is recognized as a "Master of Pastel" by PSA, and is a member of the Master Circle of the International Association of Pastel Societies. This is part of his 5-day workshop week with LCPS and we are excited to have him with us!

*Heather Hultgren  
Program Chair and Mentoring Program*



**New Brighton Community Center**  
400 10th Street NW  
New Brighton, MN 55112

#### **In case of bad weather .....**

LCPS will email members by noon the day of the meeting and will contact people who don't have email.

If you have questions, call Fred Somers at 507-645-5031 or email [studio@fredericksomers.com](mailto:studio@fredericksomers.com)

Spring will be here before you know it —  
get those greens warmed up!

