



Dust in the Wind

November 2018

LCPS Mission Statement

We seek to unite artists from beginner to professional who are interested in the pastel medium and to serve their needs by encouraging artistic growth and development through education and sharing. We also work to create public awareness of pastel as a unique and beautiful art form.

From the President



It's hard to believe that two years have flown by and I'm preparing to pass the presidency of Lake Country Pastel Society on to Christine Tierney

in January 2019. Christine has worked with us for the past two years as vice president, previously lead the Outdoor Painters of Minnesota as president. As a talented artist and teacher she will continue to bring excitement to our organization.

Now all of our challenge is to take advantage of the exciting variety of programs, workshops, exhibits. But most of all get to know one another by working together, volunteering to help whether as a board member or as a volunteer for a single event. It's much more fun when you enter in.

I see this time as if I were standing at a gate. Looking back there is a flood of memories linked with the adventure of working with everyone in LCPS. It has been such a privilege to get to know so many wonderful folks who share the common love for pastel painting. And I can see forward to wonderful opportunities for the future where I look forward to continuing to join with you.

I also see a gate for each of us: a passage between the comfort of the familiar and the uncertainties of the unexplored; an opportunity to build new artistic skills into the

foundations that have already been established; to stand beside others to encourage and to be encouraged. I remember standing with my own mentor the spring of his 100th birthday. As helpers prepared his gallery for the summer sales season he sat wheelchair bound having fought the affects of polio for more than 90 years. We looked at 30 of his most recent beautiful paintings he said, "It's time to show them what a 100 year old one-eyed artist can do." Though he passed away later that year, he had never stopped looking out into the future and sowing into what his future would look like.

I love the word "RUACH", the Hebrew word for breath, for inspiration. It's found at the very beginning of the Creation story as "God breathed" and continues throughout at every stage of creation. I long to walk in that forever inspiration of creation. And that is my desire for each of us in LCPS.

Congratulations Christine and Congratulations Lake Country Pastel Society.

Paint What You Love. Walk in the Light.

— Fred Somers



Contents	Page
September Demo with Suzanne Beck	2
Upcoming meetings	3
2019 Workshop	4
Member News	6
Fall Show Reception	9
Calendar	10

September Member Meeting

Portrait Painting Demo with Suzanne Beck

Our September meeting consisted primarily of a wonderful demonstration of portrait painting by Suzanne Beck. Beck is a member of the Portrait Society of America, and also serves as an ambassador and resource for Minnesota artists.

The evening went quickly as Beck is an entertaining speaker as well as an excellent instructor. "As you can tell — I'm a talker," she said. Yes - funny and informative!

A bunch of take-aways, not in absolute order:

- Drawing, drawing, drawing. Accuracy is SO important. "You have to start with anatomy." "Get it right the first time."
- Really understand the Light Effect. the three main values: light, shadow, and the mysterious transitional planes. Identify, simplify, and block them in.
- Work from simple to more detailed.
- She works on a middle-value toned paper — often la Carte Pastel Card.
- And works from dark to light and warm to cool. Starting with brown or umber and then going on to red for muscle or blood, green for skin over muscles, and white for shiny highlights.
- Science is very important to her work.
- "Fake the colors you do not have."

In the time Beck spent with us she focused on demonstrating the Verdaccio Technique. She used a variety of well-sharpened pastel pencils — in a series of hatching motions. "It's kinda like magic," she said.

With a green verde-value painting underneath she then used lime-yellow, a mid-tone green, and a cool green for the portrait head's deep shadows. Then came layering of peachy tones for luminous color.

She spoke of studio lighting, using the "Rembrandt Quadrant," and holding long (up to 1 1/2 – 3 hours) photo sessions for working on her portraits.



Suzanne warned against common structural mistakes such as drawing overly long noses, cheekbones drawn too low on the subject's head, and "almond-y" eyes. (A tip: Draw the upper eye-lid first. The lower lid will draw itself.)

A few last tips:

Make your strokes as light as possible as long as possible; experiment with different paper backgrounds; and don't drop your pencils, as the pastel tends to crack apart inside, while looking whole until attempted sharpening!

All in all, a most valuable evening — full of laughter, amazing images, and inspiration!

— Susan Rowe

Member Meetings Continued

November Member Meeting:

Tuesday, November 13, 7-9 p.m.

Join us for the LCPS "Paint-Around"!

- Six Artists. Rotating Around.
- One Hour to do a painting.
- Who will remain standing?
You don't want to miss this night!
- Come watch six different pieces be created right before your very eyes.
- Watch and observe techniques.
- See the final pieces.
- **Be amazed!**

**SAVE the DATE! LCPS Third Annual Paint-In
Saturday January 26, 2019, 11 a.m. – 4 p.m.**

Escape the cold and ice of January and spend a warm day painting indoors with friends at the New Brighton Community Center. More details to come! New to pastel? You are welcome to join us in "Exploring Pastels", a special session focusing on pastel basics and getting started.

— Heather Hultgren
Program Chair



*Dakota Art
Pastels*
your pastel specialist!

888.345.0067
WWW.DAKOTAPASTELS.COM

It is time to renew your LCPS membership

Membership is valid from January 1, 2018 to December 31, 2018. To renew, please go to the Lake Country Pastel Society's [website](#) and select "Contact". This will give you the option to renew online using PayPal, or to download a "Membership/Renewal" form and send checks, payable to Lake Country Pastel Society, to:

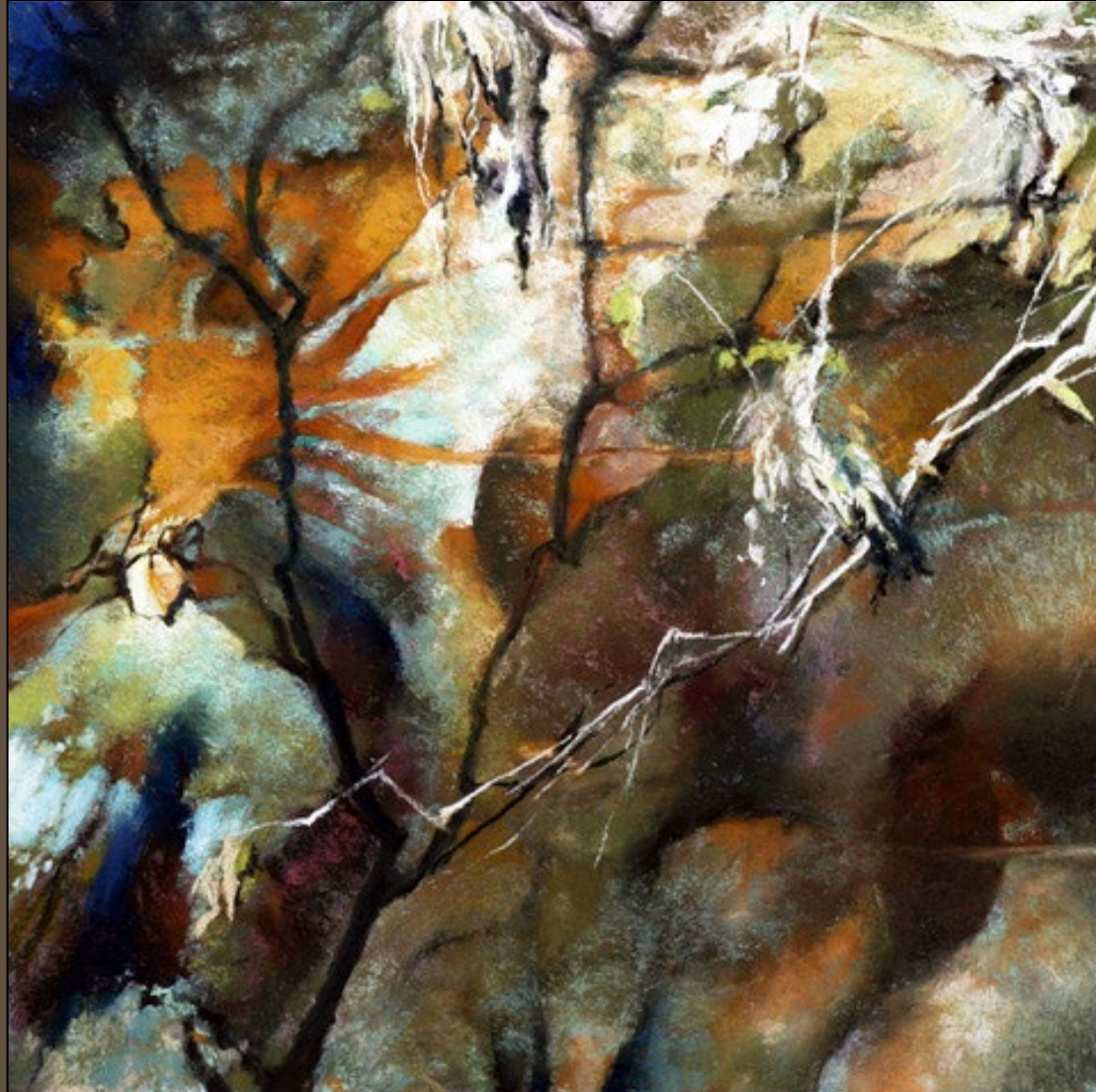
Claudia Hodges
1933 122nd Ave. NW
Coon Rapids, MN 55448

The membership fee is \$30.

Karen Berning's time on the board is almost up — she's done a great job as Membership Chair. We now welcome Claudia Hodges as she transitions into this position.



Spring 2019 workshop with Colette Ody Smith



Colette Ody Smith

Glyph Face

Lake Country Pastel Society is looking forward to our next workshop on May 13, 14, and 15 with Colette Ody Smith, a recent winner of one of the top prizes in the annual Pastel Journal competition. Her paintings are inspired by nature walks and careful observation. She uses photos which are then combined and manipulated to compose her unique style of abstracted realism. She is an enthusiastic and encouraging teacher who guides her students to achieve success

The cost for three days is \$375 for members and \$400 for non-members. This is a studio class, which will be held at the New Brighton Center, and includes refreshments each morning. A \$100 deposit is requested to secure your spot and the balance will be due by April 1, 2019. The Registration Form is on the next page of the newsletter and will also be available on our [website](http://www.coletteodyasmith.com). To see more of Colette's work: www.coletteodyasmith.com

Workshop description

Local Color: Making the Most of What Nature Gives You

This class is for landscape painters who sometimes feel constrained by an overwhelming blue/green palette, the dullness of the light, the color limits of the season, or less than perfect photos to work from. In this workshop, we will take an experiential, non-academic approach to maximizing your color skills. By working with your photos to create pastel landscapes over a watercolor base, Colette will guide you through raising your color perception, increasing your color acuity, and expanding your color vocabulary. Using direct instruction, numerous examples, and demonstrations, she will launch your class work with a fresh approach to keeping your colors clean and effective. Ms. Smith generously shares from her nearly 25 years of pastel experience through lots of individualized instruction keyed to your intent. The 3 days will be loaded with tips, techniques and thoughtful approaches to developing your art as you continue on your own.

Initial Registration Form

COLETTE ODYA SMITH WORKSHOP — LAKE COUNTRY PASTEL SOCIETY — May 13–15, 2019

Name _____

Address _____

Phone _____ Cell _____

E-mail _____

Amount enclosed \$100 Down Payment or \$375 Full Payment (\$400 non-members)

Make check payable to LCPS and mail to: Eileen France, LCPS Workshop
13024 Garrett Lane
Apple Valley, MN 55124

COLETTE ODYA SMITH WORKSHOP

Return this portion with balance due by April 1, 2019

Name _____

Phone _____ Cell _____

E-mail _____

Amount enclosed _____ (\$275 due if initial payment was \$100 — \$300 non-members)

Make check payable to LCPS and mail to: Eileen France, LCPS Workshop
13024 Garrett Lane
Apple Valley, MN 55124

Member News



Art Weeks



Art Weeks

Art Weeks

I found these two pastels in my archives completed in 1994; yes 24 years ago — the spring landscape done on Canson paper; the shore scene done actually on 600 grit sandpaper, probably not even acid free! I pulled them out as part of a clean-a-thon in my home studio and discovered that they actually looked better than what I remembered. Did some touch ups and photographed them in digital format. Don't know if it is because I am getting older, but there is an increasing tendency for me to like my older paintings much better now compared to when they were first done!



Denise Presnell

30x22

Absurd Ripples

Denise Presnell

My pastel, "Absurd Ripples", has been accepted into the 23rd IAPS Juried Exhibition — the 2018 Web Show. The show opens up on November 1st, 2018.

View accepted work at: http://www.iapspastel.org/exiaps_previous.php

Member News continued



Fred Somers

Floating Free

Fred Somers

Fred's painting, "Floating Free", 18 x 24" Pastel with 22 carat gold leaf on mounted Canson., was shown at "Enduring Brilliance", the [Pastel Society of America](#) exhibit in New York city.

Rita Corrigan

I have been invited to show at the following venues

"Visions Across Minnesota and Europe

The Women's Club of Minneapolis
410 Oak Grove St.; Minneapolis, 55403

November 5, 2018 - January 7, 2019

Artist's Reception Friday, November 9, 5:30-7:00
Open to the public free of charge

Nonmembers are welcome to view the artwork during the following hours:

Tuesday, 9:00 - 11:00 am

Wednesday - Friday, 9:00 - 11:00 am and 2:00 - 5:00pm

Saturday by appointment only; please call 612-813-5300

Sunday, 9:00 - 10:30

AND

"Remembrance"

Benedictine Monastery
2675 Benet Road; St. Paul, MN 55109

November, 2018 - January, 2019



Rita Corrigan

22x30

For All the World to See



Rita Corrigan

18x49

Morning Walk

Member News continued

Linda Baudry

Linda will be giving an art talk at the Grand Marais Art Colony entitled **Remembering Space**. The event will be Wednesday, November 14th from noon to 1pm.

In her pastels, Linda explores color and mark making as emotion, creating spaces that invite contemplation. She will share about her artistic journey and how she draws inspiration from both the internal and external worlds.

The event is free and open to all!



Linda Baudry

(Detail from) Passing II



Beth Peck

Rachel and Val on the Bed

Beth Peck'

Beth's painting Rachel and Val on the Bed was juried into the American Women Artists show at the Haggin Museum and also won a purchase award.

Full Sun: American Women Artists Illuminate the Haggin Museum celebrated a reimagining of the Haggin's remarkable 19-20th century art collection. AWA artists created works inspired by a selection of the museum's paintings including works by Albert Bierstadt, Rosa Bonheur, Pierre-Auguste Renoir, and other notable painters. The work of contemporary American Women Artists created in response to these paintings adds new points of view from a different time and place — and almost entirely from a different gender.

Full Sun tells an astonishing tale as it highlights how rare it is to see a work of art created by a woman in a museum setting.

From Beth Peck: Rachel and Val on the Bed: This painting was done from photographic reference. I had no plan when I started photographing. Rachel and Val are identical twin sisters and we lived in the same town. I think the painting evokes a sense of mystery, and a question of the women's relationship. But also, because I knew they were sisters, I felt that this painting had a definite resonance with La Toilette by Pierre-Auguste Renoir.

I have been a children's book illustrator for many years. Beginning graduate school at age 47 gave me an opportunity to explore another aspect of drawing. These new drawings and paintings of women became an outgrowth of my interest in the way we pursue our identity within contemporary standards of adornment.

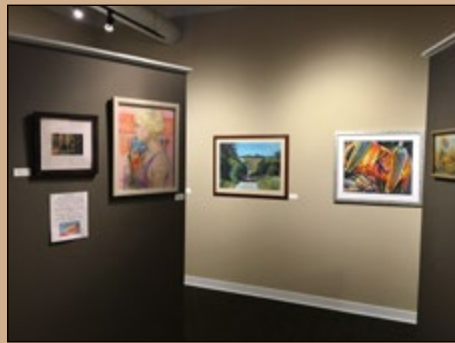
My focus began with women who are tattooed or had brightly colored hair, but was not limited to this type of adornment. It is the nuanced beauty of the individual that is the starting point of my interest.

After graduating Rhode Island School of Design in 1979, I came back to the New York area and studied figure drawing and painting. Harvey Dinnerstein was a wonderful teacher. I took classes with him for many years. Jack Henerson taught a Saturday morning figure drawing class at the League. Robert Beverly Hale was very old, but my first year I was able to attend his lectures. I studied privately in Burton Silverman's studio. I think this experience of working from life informs my drawing when I am working from photographic reference.

The AWA show at the Haggin Museum was August 2 – September 16, 2018. Juried artwork can still be viewed on-line at <https://americanwomenartists.org/gallery/2018-haggin-museum-show-full-sun.html>

LCPS Show at the Stillwater Art Guild Gallery

Reception October 5; Show October 2 – 27, 2018



Wet Paint

1684 Grand Ave St. Paul, MN 55105
wetpaintart.com
651-698-6431
M-F: 10am-8pm Sat: 10am-6pm Sun: 12pm-5pm

The complex block features a background image of various art supplies including markers, a pencil, and a jar of paint. The logo for 'Wet Paint' is prominently displayed in the center, with a blue handprint icon. Below the logo, the address, website, phone number, and hours of operation are listed in white text on a blue background.

Board of Directors

President

Fred Somers
507-645-5031

Vice President

Christine Tierney
612-210-3377

Treasurer

Connie Ludwig
651-923-5047

Secretary

Nancy Dalhof
952-544-8927

Program Chair and Mentoring Program

Heather Hultgren
651-739-1329

Exhibit Chair

Art Weeks
612-859-0180

Hospitality

Sher Leksens
612-770-4310

Workshop Chair

Eileen France
952-431-9753

Public Relations

Michelle Wegler
218-724-8010

Membership Chair

Claudia Hodges
763-242-4894

Historian and Newsletter

Carol Pruchnofski
715-425-8101

For Sale

Pat Duncan has a student that is looking to sell this Heilman box. All the information is included in the first picture.

Contact: Zoe Rochester from Amery, Wisconsin
Phone number: 715-268-8346 (home land line);
Cell 715-607-8002



New Brighton Community Center

400 10th Street NW
New Brighton, MN 55112

In case of bad weather

LCPS will email members by noon the day of the meeting and will contact people who don't have email.

If you have questions, call Fred Somers at 507-645-5031 or email

studio@fredericksomers.com



Lake Country Pastel Society — 2018/2019 Calendar

September 11

5:30 Board Meeting
7:00 LCPS Paint-Around

January 26, (Saturday)

3rd Annual Paint-In
11 a.m. - 4 p.m.