



Dust in the Wind

July 2023

LCPS Mission Statement

We seek to unite artists from beginner to professional who are interested in the pastel medium and to serve their needs by encouraging artistic growth and development through education and sharing. We also work to create public awareness of pastel as a unique and beautiful art form.

From the President	1
Members Meeting	3
Open Position	6
Upcoming Events	7
Challenge	12
Workshop	15
Articles	17
Member News	21
Calendar	24

From the President



Art Supply Love

As I shared in early June, my mom recently passed away. She would have been 80 in August and was living her best life! Now comes the difficult task of clearing out her home for sale. It is going to be a daunting process, in part emotionally, but also because my mother's decorating style was "I Want that!". Yep, she had a QVC credit card!

Of all the things she had some of her favorite possessions were her arts and craft supplies. You name the project and she had EVERYTHING you needed to do it. There is a room entirely FILLED with shelves, boxes, bins, and dressers containing these wonderful goodies plus several rolling carts for her beading projects and baskets for her knitting. There are sheds FILLED with tools and raw materials. And don't even get me started on the entire carport filled with shells!

OH MAAAN I loved visiting her. We would spend hours making art together. I slept in her craft room on a barely cleared day bed and went to sleep dreaming of craft projects!

Not surprisingly, my sister has deferred the craft area clean-up to me. She and our husbands just shake their heads at the volume of it all. I, on the other hand, am going to have to show incredible restraint so as not to hire a U-Haul and bring it all to my house!

I've already donated many boxes of stickers, paper, greeting cards and fabric. The power tools all found good homes. The shells...not sure what we are going to do with them. My sister thought it would be a blast to scatter boxes of them along the beach and have fun watching people find them. (My mom and sister live near the beach in Aptos & Soquel California). But we're pretty sure there is a law against that!

I'm especially enjoying the excavation of her craft room. I've just gotten started and have so far found a box for metal clay jewelry that includes everything except the kiln! There is another box for book binding which she must have bought after a craft project we did together making travel journals. Cardboard purse project, mosaic project, acrylic paint in every

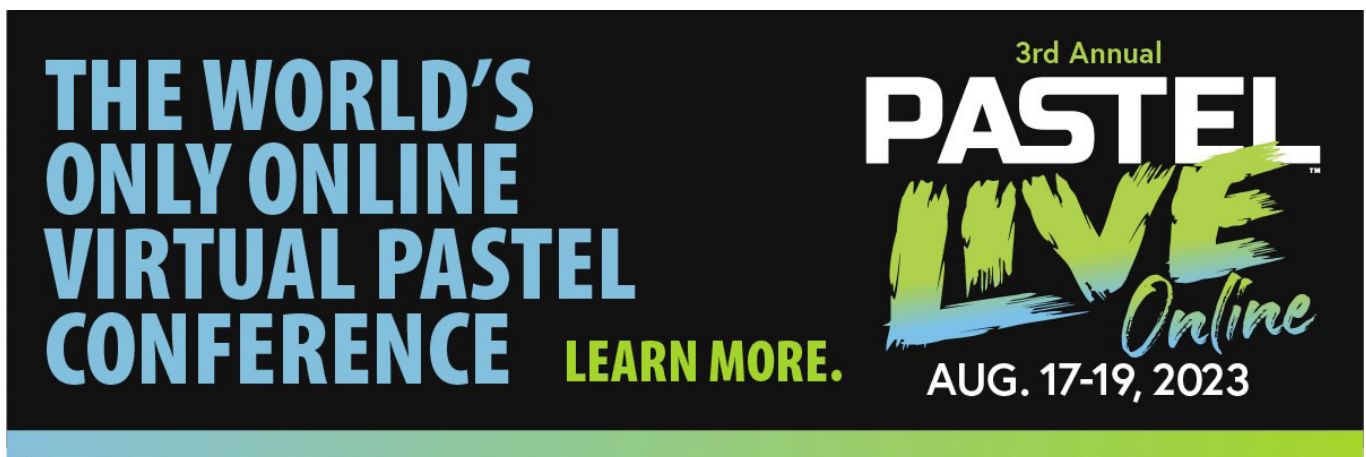
color – check, check, check. And I've hardly scratched the surface.

The apple does not fall far from the tree. I too have a room filled with art supplies and really don't need any more. But.....they are SOOO fun! It's bittersweet going through her things. We will all miss her terribly, but we are also enjoying reliving great memories and laughing at each new unearthed treasure. I will no doubt be bringing home some (many!) projects to enjoy doing with her, in spirit.

I'm betting that you too have your own stash of art/craft supplies. Enjoy them! Use them! Share them! But don't feel bad if you leave them behind some day. It will be just one more sparkling memory of the creative life you lived and loved.

Hugs to you all.

Wendy



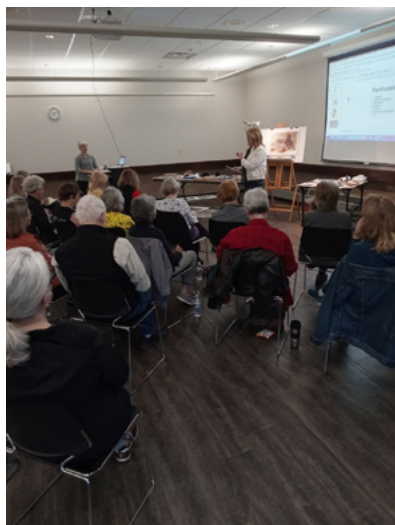
**THE WORLD'S
ONLY ONLINE
VIRTUAL PASTEL
CONFERENCE** **LEARN MORE.**

3rd Annual
PASTEL
LIVE
Online
AUG. 17-19, 2023

Members Meeting

Recap of the May 9 Meeting at New Brighton Community Center

It's exciting to see that our attendance is slowly growing back to our pre-covid numbers. There were over 30 people, six of whom were guests and some new members as well. After a short business meeting presented by President Wendy Peterson, Becky Jokela happily introduced our presenter, Dawn Emerson.



Dawn opened with an intro on what exactly pan pastels were. She began with a slide presentation explaining her process for exploring art. Although many shows have specific requirements for the types of paintings that can be entered for exhibition, there is no such thing as a requirement when it comes to exploring art. One must always learn new ways to explore art without having to copy images. Whenever you approach something, your aim is to have fun.

With pan pastels one uses small sponges like a paint brush. It's wider, softer and more flexible than the traditional pastel stick. "Although pastel dust sticks to everything, nothing sticks to pastel dust" (a quote in one of her slides). The slides included samples of the art work she had completed with pan pastels. Normally she starts with a stencil of some kind. Then she adds more color and even small objects occasionally to make the painting a 2-D object. Other media is also used at times, like water color, water soluble oil paints, and even inks. Sometimes she uses a Dremel tool on wood or another object to outline her subject, then paints on top of that surface. Or the Dremel tool can be used AFTER the colors were added to the surface. With these slide illustrations, she explained many of the techniques and options she uses while she paints with pastels.

She started her demo with water-based oil inks, and with lovely music. The ink underpainting was followed by pan pastels, using the sponges. Our greatest surprise and delight was watching her dance to the music as she painted! She did not wait for the ink to dry before applying the patches of pastel.

Dawn used a razor blade to scrape/carve out her design in the surface of the pastels. Her joy in painting clearly came through during her demo. Prior to using this board, she used tape to frame the image she was going to use, so now that she was done, she removed the tape and had the painting already "framed." Following this demo Dawn showed several more of her works of art as samples of the type of experimenting she does with pastels and using other media and/or materials. If she had an old painting that was not favored, it would be used as a backdrop or underpainting for a new picture. She gave a quick demonstration of the transfer method.

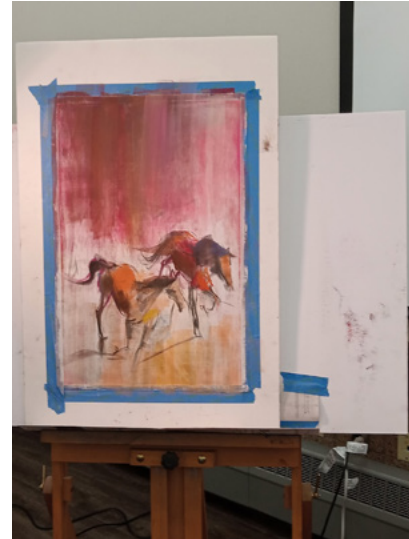
Some suggestions she made about working with one's art work were:

- Take pictures as you go along, it could help to clarify when you should stop working on one
- You do not have to know where you are going when experimenting, but do get in touch with what you are doing
- Take those risks while you are painting, or you may never learn anything more



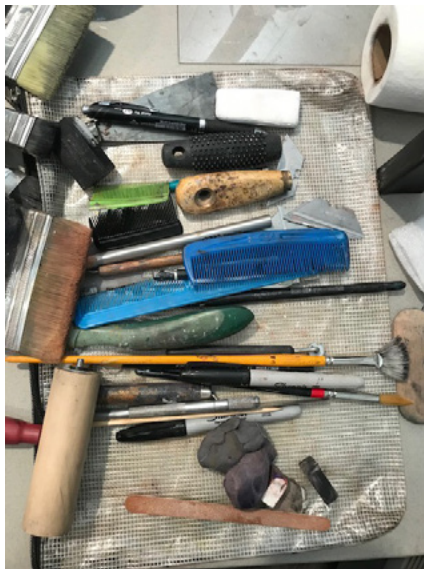
- Set a timer for how long you should paint
- Remind yourself “it’s just paper”
- There is no “one way,” explore whenever you can
- Come back to a “finished” painting and see if there is any more you could do

Following this last demo she answered people’s questions. The audience was free to roam the room and see some of the work that was completed by students during her two days of training (thus far).



Steve Budas
 LCPS Program Chair
 Minneapolis, Minnesota

Members attending the May 9th meeting had quite the treat getting to experience presenter Dawn Emerson’s wonderful presentation. Practicing the push-pull of addition and subtraction, Dawn uses her playful energies to push the boundaries of using pastels.



She showed some images of previous work illustrating such diverse methods as using a Dremel tool to carve into surfaces to later be used for printing, embossing, using oil paints and oil pastels for underpainting, carving into pastels placed over oil paint, hot glue sticks to build surfaces for calligraphy prints. What ever might work! Dawn said, “Everything they say not to do - that’s what I try.”

The demonstration began with Dawn saying, “*I am going to go very quickly.*” She put instrumental music on her sound system, began to bob, sway, and dance with the sounds and her art supplies. Starting with dark water-soluble oil paint, sponge, and brayer to establish basic landscape areas, she then used large strokes of pan pastels to add local color. “It’s transparent - it’s not heavy handed - I’m not trying to copy exactly.” She often worked with a large cloth in the left hand and a pastel sponge or stick in the other hand. She added small marks, swipes of color, and scribbled, and sometimes used a razor blade to carve into layers of pigment.



“I don’t know what I’m doing - I just go and play.”

Painting almost nonstop, she took time to say, *“Take pictures of your work as you go; Intention evolves as you go; It’s just paper and dust.”*

But her supplies included much more than paper and dust. A table was filled with Sumi inks, stencils, charcoal, oil pastels, large erasers, a number of printmaking tools, brayers, combs, palette paper, and a number of other mark making and mark removing tools.

“There is no one way.”

“Go out and practice all the time.”

She suggested developing *“a hand that is sympathetic to pressure.”* When using pan pastels - *“The sponge becomes the brush.”*

Meeting time went by so quickly - as the music played, Dawn danced and painted, and we were treated to a very special evening!

Sue Rowe

BLICK[®]

art materials

An advertisement for Wet Paint art materials. It features a collection of colorful art supplies including markers, pencils, and a jar of teal paint. The logo for Wet Paint is prominently displayed, along with contact information: 1684 Grand Ave St. Paul, MN 55105, wetpaintart.com, 651-698-6431, and store hours: M-F: 10am-8pm, Sat: 10am-6pm, Sun: 12pm-5pm.

Wet Paint
1684 Grand Ave St. Paul, MN 55105
wetpaintart.com
651-698-6431
M-F: 10am-8pm Sat: 10am-6pm Sun: 12pm-5pm

Open Positions

Public Relations/Advertising -2 years term

Are you good at Facebook and Instagram?

Do you like to write?

Want to increase visibility for our group and gain sponsorships?

Would you like to help increase participation in shows, workshops, membership?

Skills needed:

Experience creating postings and events in Facebook and Instagram

Able to write short articles and ads

Good at researching local publications for ad placement

Willing to approach existing and potential sponsors

Time Commitment:

1 ½ hour monthly board meeting prep and attendance

2 hour member meeting attendance (optional)

Approx 1 hour per month for creating social media posts

Create Ads for 2 Art exhibitions and 2 workshops per year.

3 Annual sponsorship renewals with existing sponsors

You can share this role with another person, or create a committee to take on all of the tasks.

For a full position description, contact Susan Warner

susanmwarner@hotmail.com

Vice President - 2 years term

followed by 2 year President term and 2 year Past President Term

This is the biggest commitment to LCPS. If you have been a member and want to make a long-term commitment to the future of our group, please consider taking on this role

For more information please email Wendy at

Wlpeteking@gmail.com.

Exhibits (Be a member of the Exhibits Team)

2 years term

Do you have an eye for hanging art?

Do you want to help our group find great galleries for our exhibitions?

Do you have experience planning events?

Skills needed:

Writing skills for prospectus and gallery applications

Organizations skills for deadlines and tracking participants

Word and Spreadsheet skills for creating labels

Contacts for galleries and judges

Ability to delegate and manage a small team of volunteers

Time Commitment:

Prep, plan and manage 2 shows per year

2 hour board meeting per month

2 hour per month member meeting attendance (optional)

Time to find appropriate venues for future shows

Be present at drop-off, set-up, take-down and pick-up for shows

It is highly advised that you share this role with another person, or create a committee to take on all of the tasks.

For a full position description, contact Susan Estil at

sestill58@gmail.com

Exhibits Committee co-Chair:

Work with partner to locate and Coordinate 2 annual exhibitions for LCPS. One is judged, one is not judged. Position entails talking to gallery staff and handling administrative details of publishing notice of exhibits to our membership and gathering entries. Sometimes you will help hang an exhibit depending upon the hosting gallery policy.

Secretary - 2 years term

Do you like to write?

Can you be available for the Board meetings each month?

Skills needed:

Listening and Writing skills for reporting on monthly board meetings

For a full position description, contact Nancy Dahlof

Upcoming Events

July 11 paint out, 4pm – 7pm, Keller Regional Lake, Ramsey County

Join other members for a wonderful time painting outdoors. Our park destination is Keller Regional Lake (and park) just off Hwy 61, north of St. Paul. Last year the group enjoyed a fantastic weather day and the month of July is mostly without rain. Steve will be there to see you in and let you know the landscape. There are parking spaces available immediately when you pull into the park. The bridge to the “island” is just about 50 feet away from our parking space. This event will occur RAIN OR SHINE, so dress appropriately. There is a shelter if it does rain. We hope to see you there.



On the island of Keller Lake

September 12 meeting, 7 – 9pm, New Brighton Community Center

Many people work with outdoor scenes, but have you ever tried doing a still life painting? Or even had questions about doing the background for it, light angles, objects use, etc. Come for this meeting and hear what options and techniques you may learn about from member Kathe Drake. Kathe Drake is an award-winning pastel and oil painter. Like many artists, she has been creating art since childhood. She graduated from the University of Minnesota with a minor in art and furthered her studies at the Minnesota River School of Fine Art, where she went on to teach pastel painting. Most of Kathe's work is created directly from life. She is particularly drawn to feminine subjects - women and their clothing as well as to flowers, fruits and vegetables. Even common place objects gain significance when carefully viewed and incorporated into her still lifes.



Still life
Kathe Drake

October Special Meeting, Brighton Community Center Family Room

On October 10 th, Desmond O'Hagen will give a live demonstration of his painting technique in the family room of the New Brighton Community Center. If you are not attending his workshop, it is worth getting some new ideas and tips on working with pastels from an expert, at no additional cost to you.

November 14, Paint Around, New Brighton Community Center

We will feature five members who volunteered to do a paint around. If you have never seen one or wish to get new ideas and tips, then do come to this gathering. The five people will bring one of their own printed pictures, start on their painting and after about 20 minutes, pass their canvas onto the next painter. The final paintings will be auctioned off at the end as part of our annual fund raiser. This is an event you don't want to miss.

Steve Budas
LCPS Program Chair
Minneapolis, Minnesota

Lake Country Pastel Society - 2023 Judged Exhibit

Saturday August 26th-Monday, October 2, 2023

Hosted by: First Presbyterian Church – 535 20th Ave. N South St. Paul

AWARDS – Over \$800 in prizes

JUDGE OF AWARDS – Hannah Heyer,

Hannah is a self-taught artist living and working in rural southeastern Minnesota. Working in oils and watercolour, her work is a study of place, time, and season. You can learn more about Hannah on her website, Facebook or Instagram page. https://ambitioussnail.blogspot.com/?fbclid=IwAR2VsEs02DvMU_xFjSeTmaPeZofiaPCu0RMpMMQbCA_MnF6zO6P-gEegdl2D0

PROMOTION

This is a beautiful venue with a tradition for supporting the arts. It is also a busy venue, open six days per week, with many weekly events resulting in a high volume of foot traffic.

Online Promotion: Entry photos will be posted on the LCPS website and featured on the LCPS Facebook and Instagram pages starting August 8. Winning entries will then be showcased after they are announced at the Opening Reception.

PROSPECTUS Calendar

- August 1 – Entry Deadline. Forms and payment due. (No Late Entries Accepted)
- August 24th, 10am-2pm (Thursday) - Drop Off of Artwork
- Hanging of the show will be from 2pm-4pm
- August 26, 2pm-5pm (Saturday) - Opening Reception, Juror Talk and Awards Presentation
- October 2, 11am-2pm (Monday) - Pickup of Artwork

Paintings must be picked up and dropped off during listed times. (If unavailable on list drop off arrangements must be made with other LCPS members for drop off at the stated date/time.)

Eligibility and Restrictions

Must be a current Member of LCPS (Membership renewals can be made online.)

Exhibit entry fee is \$20 for 1 piece; \$25 for 2 pieces; \$30 for 3 pieces.

In lieu of a sales commission, a donation in the amount of 20% of sales price will be made to the church.

- Paintings must be 85% soft pastels, no oil pastel
- Artwork must be completed within 2 years of exhibit start date
- Work must not be completed under supervision or classwork
- Paintings from past exhibitions are not eligible
- No title or price changes after submission
- Paintings must be framed, under glass, and ready to hang with wires attached. (No sawtooth hangers)
- Artwork must remain until the end of the show.
- Paintings must be tasteful and respect family viewing. (No nudes)

Insurance and Liability

All Possible care will be taken with your artwork, however LCPS is not responsible for loss or damage to artwork at any time. Artists must arrange insurance if desired.

Entry Procedure

1. Fill out and sign the entry form. Mail the entry form and check (Payable to LCPS), postmarked by Tuesday, August 1st to: Wendy Peterson, 811 Hidden Lake Road, Roberts, WI 54023
2. Email a high quality jpeg (jpg) image file to wpeteking@gmail.com. Please name your file last name, first initial and title of the work. e.g. lastname_first initial_title.jpg.
3. Fill out ID tags to match entry information and attach to the upper left corner of the back of the painting before drop off.

Questions: Contact—Wendy Peterson, President, wpeteking@gmail.com, 651-247-4405

We will try to organize a list of volunteers to drop-off and pick-up paintings if you are not able to do so on the scheduled dates. But it is always best to reach out to another member directly.

Entry Form for the Lake Country Pastel Society 2023 Judged Exhibit

Name _____ Address _____

City _____ State _____ ZIP _____

Phone _____

Email _____

_____ I am available to help hang the exhibit Thursday, August 24th 2pm-4pm

_____ I am willing to hold and deliver pieces to or from the exhibit location

I AGREE TO ALL THE TERMS SET FORTH IN THE PROSPECTUS

Signed _____ Dated _____

Entry #1

Title _____

Price (Including 20% Donation to FPC) _____

Not for Sale _____

UnFramed Dimensions: Height _____ Width _____

Entry #2

Title _____

Price (Including 20% Donation to FPC) _____

Not for Sale _____

UnFramed Dimensions: Height _____ Width _____

Entry #3

Title _____

Price (Including 20% Donation to FPC) _____

Not for Sale _____

UnFramed Dimensions: Height _____ Width _____

ID TAGS for the back of your paintings

Artist _____

Title _____

Dimensions _____

Price _____

Phone _____

Artist _____

Title _____

Dimensions _____

Price _____

Phone _____

Artist _____

Title _____

Dimensions _____

Price _____

Phone _____

Challenge

June Challenge – BRIGHT!

Thank you to everyone who submitted a picture for our June Challenge as part of a memorial to my mom Dottie. You are all so incredibly talented and kind. I will be making a digital poster of the entries to display at her Celebration of Life event.

Wendy Peterson, LCPS President

The winners of our drawing (each person who entered was eligible) are Faith Ralston and Christina Garrasi. Each winner will receive a four-piece set of Unison Handmade Pastels, half-sticks – Red-Orange colors. The prizes will be mailed.

Here are the amazing entries.



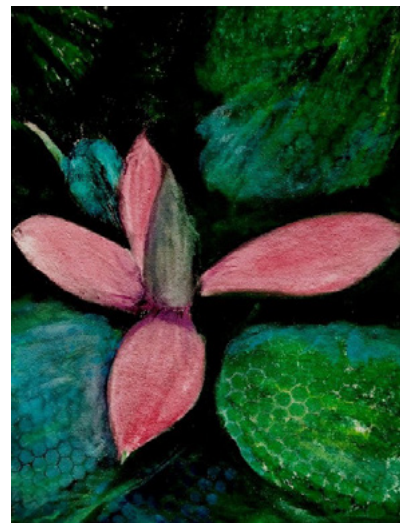
Antigua Arch
28 x 32
Faith Ralston



Christina Garrasi



Black Eyed Susan
Beryl Carland



Water Lily
Beryl Carland



Sunny
16 x 20
Connie Ludwig



Color!
Becky Jokela



Looking at You
Steve Budas



2023 Northern Light
Chris Walton



Beloved Roxy
9 x 12
Wendy Peterson



Seventh Wave
Susan Warner



Benediction
9 x 12
Fred Somers



Color Study 1 Pastel and Spectrafix
4 x 4
Rita Kirkman



Nancy Dahlof



Vase with Flowers
Beryl Carland

LCPS Fall Workshop

“My eye is attracted to the effect of light and energy - the moment that turns your head and makes you take a second look. Everything is a combination of abstract shapes that combine to form a representational image”.

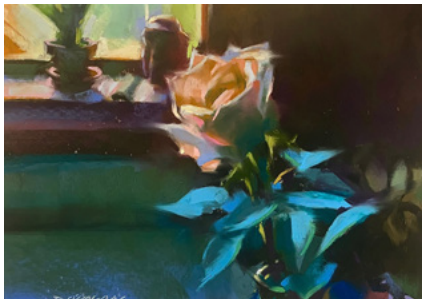
-Desmond O’Hagan

“CAPTURING LIGHT- Interpreting Values and Shapes” with Desmond O’Hagan.

October 9-11, 2023

The Lake Country Pastel Society is excited to host Desmond O’Hagan as our instructor for the fall workshop. O’Hagan is an award-winning artist who teaches workshops throughout the country.

“I believe it was the best, most inspiring workshop I have ever had the pleasure of participating.” –Austin Pastel Society



“His engaging personality and willingness to help makes him the ideal person for any group planning a workshop.” -- Pittsburgh Pastel Artist League

Workshop description

O’Hagan’s workshop is designed to help participants reach their next level in pastel painting, emphasizing composition and technique through a more painterly approach. Individuals will explore subjects in a new light, refining shapes and edges with minimal strokes. Desmond works with participants individually to critique and offer new directions in completing their paintings.

Bio

Denver-based Desmond O’Hagan has exhibited and won awards nationally and internationally. Among his accolades he is listed in Who’s Who in American Art, is a Master Pastelist with the Pastel Society of America and has achieved Eminent Pastelist status with IAPS. His work can be found in museums and private collections worldwide. His paintings have been the subject of feature articles in numerous magazines. The most recent article is in the 2023 PASTEL WORLD magazine: Click [HERE](#) to view.

Also check out his website at www.desmondohagan.com.

The workshop, which is NEARLY HALF FULL, will be held at the New Brighton Community Center, New Brighton, MN. The fee is \$425 for members (\$450 for non-members).



Registration forms are below.

Initial Registration Form

DESMOND O'HAGAN WORKSHOP — LAKE COUNTRY PASTEL SOCIETY — OCTOBER 9-11, 2023

Name: _____

Address: _____

Cell Phone: _____ Other: _____

E-mail: _____

Amount enclosed: _____ \$100 Down Payment or
_____ \$425 Full Payment (\$450 non-members)

Make check payable to LCPS and mail to: Becky Jokela, LCPS Workshop
37429 65th Avenue
Cannon Falls, MN 55009
bjokela@gmail.com



DESMOND O'HAGAN WORKSHOP — LAKE COUNTRY PASTEL SOCIETY — OCTOBER 9-11, 2023

Return this portion with balance by September 1, 2023

Name: _____

Address: _____

Cell Phone: _____ Other: _____

E-mail: _____

Amount enclosed: _____ \$325 due if initial payment was \$100 (\$350 non-members) or
_____ \$425 Full Payment (\$450 non-members)

Make check payable to LCPS and mail by 09/01/2023 to: Becky Jokela, LCPS Workshop
37429 65th Avenue
Cannon Falls, MN 55009
bjokela@gmail.com

Judged Exhibits Article: Part One

You all know that we have another upcoming show in August. The deadline is drawing near and the prospectus that was in our May newsletter has all the rules for entry. I wanted to write about entering shows. It is important to start sending your entries to small shows and work your way up. For beginning artists, receiving appreciation from people other than friends and family is a very encouraging part of making progress in your career. Entering an art show, is a wonderful means for you to gain validation and recognition for your hard work, no matter what your artistic level is.

Smaller shows are often judged, but not juried, like what we have coming up. Entering this show is limited to artists who have current membership in the Lake Country Pastel Society (LCPS), and we can exhibit all entries (within the guidelines) without the need to reduce the size of the exhibit through a jury process. To be successful, you must be visible. Make sure you have the discipline and perseverance to continue painting.

As members of LCPS we encourage you to enter and we are more than happy to share our thoughts and talent with you, since we all love the art form. Once you have entered a few non-juried shows, you can proceed to local and regional juried shows, and eventually work your way up to the most prestigious national juried shows. I will have more to say in the next newsletter about that progression. In the meantime, let's share what we know now about pastel art.

Steve Budas, Programs Chair

Titles Your Artwork With Purpose

Artists oftentimes title their pieces in a hurry, after having spent all their creativity on the piece. At this point in time, another step to completion is sometimes incomprehensible. Our mental energy may be spent, especially if we are getting the piece ready for an exhibit. Other tasks get in the way.

But there is evidence that suggests that titles matter to the viewer's engagement, either increasing or decreasing viewer engagement. Meaningful titles that enhance the deep meaning and emotion of the piece are more strongly correlated to engagement over functional titles (e.g. Mississippi River), untitled art (e.g. Untitled #1), or untranslated or unfamiliar titles (e.g. Sfumato, although I totally love this Italian word). In addition, fanciful titles produced increased engagement over the three categories of functional, untitled or unfamiliar titles, but not as much as meaningful titles.

Titling of pieces, especially if you are trying to think outside the box, can be painful. I find it extremely easy to use a functional title but that leads to subpar engagement. I get blocked when trying to think outside a generic description of the piece. Suggestions? Perhaps get together with a friend or fellow artist to throw out ideas. Perhaps engage on social media? Brainstorming ideas can lead to more ideas. Or set aside the piece and look at it with fresh eyes over time.

Increasing viewer engagement is a goal for most artists. Titling with purpose does matter. Titling is one more important step to completion.

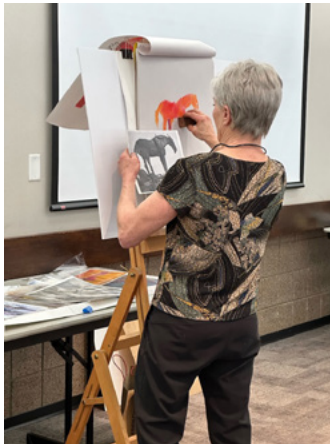
Cheryl LeClair-Sommer



Workshop - Dawn Emerson

Dawn Emerson's three day May workshop, "The Spirit of Innovation" was, as one student put it, "simply the best!". Not many people can be great artists and teachers, but she is both. It was wonderful to learn her innovative techniques and to have fun doing it. Her enthusiasm and playful attitude was contagious.

Dawn presented many approaches to painting, both additively and subtractively using PanPastels primarily, as well as stick pastels and mixed media.



Why PanPastels?

PanPastels are great for exploring new ways to use color, for layering and mark making. They may be used alone or in conjunction with stick pastels. They can be layered over many surfaces that stick pastels can't be applied to. "Dust sticks to everything, nothing sticks to dust." The soft blending tool used to apply PanPastels acts like a brush or palette knife and allows more ways to make marks and control pressure. They can be erased, scraped through with various tools or used with wet and dry media. PanPastels are non-toxic, light fast, there is no dust, no need for fixative, they are less opaque/more transparent, easy to layer and to mix colors.



Dawn loves to experiment and believes that drawing includes all kinds of mark making. Using odd tools gets you "out of yourself" and they are everywhere. Use your imagination! Erasers, popsicle sticks, stencils.... Draw freehand with a comb, paper clip, anything you can find. Use them for adding and subtracting. Scrape through layers of ink with a razor blade, create texture with netting, steel wool, tin foil, plastic wrap, crumpled paper, bubble wrap, stencils.



With PanPastels, almost anything can be used as an underpainting. Some techniques we explored were printmaking with water mixable oil, transfer techniques, light field monotypes (additive) and dark field monotypes (subtractive), “carving” techniques, stencils, frottage. And drawing with a brayer.

Everyone enjoyed the frottage technique, created by rubbing over an object placed underneath paper (Remember crayon or gravestone rubbings?) We went outside, collected objects from nature and using a charged brayer and ink, created textures and beautiful organic images. These could be incorporated into the background, middleground or foreground of our paintings.

Some take-aways from the three days were, in Dawn’s words, “Play to learn!” “You will learn more by making mistakes than by making masterpieces.” And “It’s not just about accuracy or representative images. Capture the essence, the energy.” “Less is more.”

And finally, “Drawing comes from within, it’s an extension of your body.” Watching Dawn paint was like watching someone dance. She made big, sweeping gestures and lyrical, expressive ‘marks’ using her whole body like a dancer.

Without a doubt, Dawn Emerson was an inspiration to us all. And the workshop was “simply the best!”

Becky Jokela
Workshop Chair

August 17-19 is the 3rd Annual PASTEL LIVE online event.

There will be three days of learning from 30 of the World’s Best Pastel Artists.

Tickets include access to various programming, depending on the ticket level.

<https://store.streamlinepublishing.com/products/pastel-live-2023?ref=LakeCountryPastelSociety> - Please use this link if you register, our group will benefit for any registrations that we refer to them!

Scenic painting

This process may be true for a lot of people, but when I do a painting, I reach a point where the painting dictates what to do next. At that point, I must let go of whatever it was I had in mind. Here is one example. I snapped this image (what you see is edited from the original photo) on one of my bicycle rides to Hastings, because I liked the zig zag lines that were naturally occurring in this scene, with the hill, trees, horizon, distant road and nearby field. (Note: I ignored the electric tower altogether.)

But after completing the painting (see the next image), The painting was telling me that it was “missing something.” I asked friends for some suggestions and added the following animals as part of the image.



The final painting ended up like this. The addition of the flying geese gave me the chance to enhance the zig zag pattern that was originally created! So here it is thus far! I admit, I now think the birds could have been painted higher in the sky and more centered than where they are now. Oh well!

Steve Budas – Program Chair

Becky Jokela

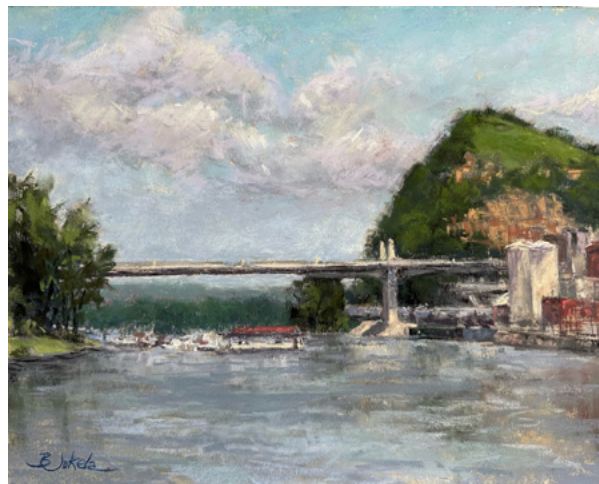
I just completed a wonderful, immersive two weeks as a participant in the Red Wing Arts Plein Air Fest, June 10-24. There was no shortage of places to explore and paint in this idyllic Mississippi River Town surrounded by bluffs, rolling hills and farms. Thirty-two artists from Minnesota and nine other states were involved. The goal was to create three finished and framed pieces for display in the final exhibit. I was honored to have been awarded Best Pastel for my painting “Summer Lookout”. The exhibit of nearly 100 paintings is beautiful, well worth a trip to Red Wing. It is at the Red Wing Arts Depot Gallery from June 24-August 20.



Summer Lookout
Becky Jokela



Old Memories
Becky Jokela



Crossing the River
Becky Jokela

Fred Somers

New pastels: "Fountains Rising" 14x18 1/2 pastel on Stonehenge paper



One of three pastels at the Minnesota Marine Art Museum (MMAM) for the Exhibit of Creating the Illusion of Light on May 13 - Sept 30, 2023 in Winona Minnesota



Turning to Joy
10 x 19 pastel
Collection of Peter McKinnon


CREATING THE ILLUSION OF LIGHT
CONTEMPORARY LANDSCAPE PAINTERS
KAMI MENDLIK & FRED SOMERS
On view May 13 - September 30, 2023

Shown together for the first time, Kami Mendlik and Fred Somers, two instrumental Minnesota painters who have devoted a lifetime to sharing the joy of landscape painting with others, orientate visitors to *The Poetry of Nature - Hudson River School Paintings from the New-York Historical Society*. In this one-of-a kind installation that is both a celebration of their relationship and their impact, select paintings point out the subtle, almost invisible techniques landscape painters have historically relied on to capture the landscape.

Support for these projects comes from the Carl & Verna Schmidt Foundation, the MMAM Board of Directors, Mr. Greg and Mrs. Terri Evans, Mrs. Elizabeth Burke and Mr. Kent Germander, Mr. George Parke III and Mrs. Sabina Bosshard, and the generosity from the sustaining contributions from foundations, corporations, individuals, members and volunteers.

This activity is made possible by the voters of Minnesota through a Minnesota State Arts Board Operating Support grant, thanks to a legislative appropriation from the arts & cultural heritage fund.

Kami Mendlik (b. 1973). Into the Silver Lining, 2022. Oil on panel.



MMAM MINNESOTA MARINE ART MUSEUM

Liz Pawlak

Some of my art will be at the Hennepin County Library St Anthony branch August 9 through September.



Lavender Fields
17 x 11



Summit Rising
9 x 13

Board of Directors

President

Wendy Peterson
651-247-4405

Vice President

OPEN

Treasurer

Susan Warner
832-663-1815

Secretary

Nancy Dahlof
952-544-8927

Program Chair

Steve Budas
952-221-6285

Exhibit Chair

OPEN

Workshops

Becky Jokela
507-263-5681

Public Relations

OPEN

Mentoring Program

Eileen France
717-572-1205

Membership Chair

Michelle Wegler
218-343-6887

Historian and Newsletter Chair

Dian Dewi
612-999-3106

Past co-Presidents

Christine Tierney
612-210-3377
Pat Duncan
612-644-6798

Lake Country Pastel Society 2023 Calendar

July 2023

1 — July Newsletter published
11 — 4-7PM ANNUAL PAINT-OUT
EVENT - Keller Lake Regional Park

August 2023

1-15 — August Challenge
17-19 — 3rd Annual PASTEL LIVE
online event.
24 — Drop Off Artwork for Members'
Judged Show. Hanging of the show is
2-4PM
26 — 2-5PM Opening Reception, Juror
Talk and Awards Presentation
27 — Submit Art, news, awards etc. for
July newsletter

September 2023

1 — September Newsletter published
12 — 7-9PM Member Meeting with
Guest Presenter – Kathy Drake - Still
Life Demonstration. New Brighton
Community Center

October 2023

2 — 11AM-2PM PICK UP ART WORK
FROM MEMBERS' JUDGED SHOW
9 - 11 — Workshop - Desmond O'Hagen
SPECIAL MEMBER MEETING - DESMOND
O-HAGEN DEMONSTRATION
27 — Submit Art, news, awards etc. for
July newsletter

November 2023

14 — 7-9PM MEMBER MEETING - PAINT
AROUND!!!! AND AUCTION (CHECK
THE MAY NEWSLETTER FOR VOLUNTEER
OPPORTUNITY)



**New Brighton Community Center
400 10th Street NW
New Brighton, MN 55112**

In case of bad weather

**LCPS will email members by noon
the day of the meeting and will con-
tact people who don't have email.**

**If you have questions, call Wendy
Peterson 651-247-4405.**

