



Dust in the Wind

January 2025

LCPS
Mission Statement

We seek to unite artists from beginner to professional who are interested in the pastel medium and to serve their needs by encouraging artistic growth and development through education and sharing. We also work to create public awareness of pastel as a unique and beautiful art form.

From the President	1
Upcoming events	4
Members meeting	6
Workshops	7
Articles	9
Member News	11
Calendar	13

From the President



A Great Idea, Well Executed

Our current show at St Paul's Monastery features work by several of the **FOUNDING MEMBERS** of the Lake Country Pastel Society. At the opening reception, two members who were present, **Cheryl LeClair Sommer and Barb Bjornson**, were asked to share a bit about what prompted them to create this wonderful organization 25 years ago.

At that time, there were few pastel artists in the Twin Cities area and they were for the most part strangers to one another. Their main reason for starting the group was to develop a support system for each other through opportunities to share ideas, learn new skills, paint together and find ways to get their work out into the world.

It was not easy to create a group from scratch, before the internet and cell phones!! Such incredible dedication to hundreds of future pastel artists, they didn't even yet know!

So again I'd like to express a heartfelt thank you to this group for giving us the gift of the LCPS group.

Welcome 2025 – LCPS has so much to offer! Please Renew Your Membership

It is time to renew your annual membership. Here are just a few of the benefits of being part of this group.

- Friendship and Support
- Education
- Exposure to other artists and art lovers
- Networking

As we head into 2025 the current board members are working hard to bring you great speakers, workshops, show venues and our newsletter.

Has LCPS had a positive impact on your life? If so, please consider joining our board.

Listed below are the board member positions along with a brief overview of responsibilities. Please take a moment to think about how you might be able to help ensure this group continues to thrive.

“Volunteering is the ultimate expression of community spirit” - Colin Powell

I wish you a very Happy New Year!

Wendy

All positions are designed to be held for a two year term with the option to extend for a second term. It is board members' responsibility to find their own replacement.

President - Wendy Peterson

Responsible for the general leadership and oversight of the group. Working closely with board members to set goals and execute plans for the year. Oversee bi-monthly zoom board meetings and attend as many group functions as possible throughout the year. Jumping in to help with any area as needed.

*Past presidents remain on the board for an additional two years in a consultant role.

Vice President - Open

Work with the President in the execution of duties - learning on the job to better prepare to take on the presidency position.

Secretary - Nancy Dahlof

Attend and record the minutes at our bi-monthly zoom board meetings. Prepare and share the official notes with the board members.

Treasurer - Susan Warner

Using a basic spreadsheet, track income and expenses throughout the year and provide reports prior to each board meeting for review. Coordinate year end tax activities. Write checks and obtain appropriate approvals for expenditures.

Membership - Michelle Wegler

Using a basic spreadsheet, track membership renewals and membership roster. Process payments and report to the treasurer. Send receipt of payment for check writers, deposit checks in LCPS bank account, provide proof of membership to new and renewed members. Share updated roster with other board members as needed.

Programs - Steve Budas

Plan and schedule bi-monthly member meetings including room reservation and scheduling guest speakers. Provide meeting information to be included in the bi-monthly newsletter. On day of meetings - set up and tear down of the facility as needed.

With a second board member, we hope to be able to offer some online meeting content for all members. Some knowledge of this type of exposure would be helpful.

Workshop - Becky Jokela and Gwen Solberg

Plan and schedule bi-annual workshops including room reservation and scheduling of the guest artist. Provide workshop and registration information to be included in the bi-monthly newsletter. Process registrations and present any financial information to the treasurer. Attend and facilitate the three-day workshops to support the instructor.

Exhibits Committee - Open (currently handled jointly by Wendy Peterson and Steve Budas)

Coordinate details for semi-annual shows. Secure the show venues and work with the on-site contact to schedule all appropriate dates. Provide workshop and registration information to be included in the bi-monthly newsletter. Track show entries, order print media including posters and show labels. On-site painting intake and hanging of the show, attend the Opening Reception and show tear-down and painting pick-up day.

Newsletter Committee - Dian Dewi

Using a basic design program, gather content and create the bi-monthly newsletter in a well-designed, easy to read format. Distribute to all members via email.

Mentoring - Eileen France

Offer one-on-one sessions with members on a variety of topics.

Public Relations and Social Media - Open

Working with board members, post upcoming events and information through appropriate channels including our website, Facebook and Instagram. Contact current and potential sponsors for donations of gift cards or products.

For more information:

These are summaries that give you an idea of the roles and responsibilities, but we have detailed job descriptions that will explain all aspects of each role. Most roles can be shared between multiple people. If you have interest in becoming part of the board, please request the full job description. The board will be happy to discuss options for role sharing.

Contact information for all board members can be found on the last page of the newsletter.



Upcoming Events

JANUARY 4, 2025, SATURDAY – PAINT-IN

New Brighton Community Center, 1 - 4 pm.



Join several of your fellow painters for companionship, feedback and support of your beautiful artwork, as we together, work on a current painting that we would like to finish. Last year, all nine people had a great time in this bright, sunny room. It's a chance to be inspired by others and to get tips or other ideas for painting with pastels. It also gets you out of the house for Mid-winter! Also, a great opportunity to meet and get to know other members of your pastel community. Come along and join us.

CURRENT EXHIBIT AT THE MONASTERY, NORTH ST. PAUL

Hey Folks, If you haven't seen our current exhibit at the Monastery, now is the time to go. We will be closing it down after January 17. One painting has already been sold, but it won't be gone until all artists pick up their paintings on Saturday, January 18 from 10 am to 2 pm.

We have over 45 paintings hanging in the beautiful hallway just inside the Monastery building. Comments we have gotten include: "Is this really done in pastel?" and "This is the best exhibit we have had to enjoy in over a year. It's nice to have this beautiful artwork in our building." You have to see it yourself to understand what they are talking about. It will also inspire you to create more beauty in the coming year with your own paintings. (postcard image)

--

STEVE BUDAS

LCPS Program Chair

Minneapolis, Minnesota

BLICK®

art materials

March 11, 2025 Tuesday – Allison Ecklund, How to Start Your Own Business
New Brighton Community Center 7 – 9 pm

Allison formed Eklund Law PC, her solo law practice, in 2007. She is former President, and now, Events Director for Outdoor Painters of Minnesota (OPM) and is the lead organizer of Plein Air Grand Marais, Plein Air Duluth, and other painting events throughout Minnesota and beyond. With her vast lawyer knowledge, she will explain how one is able to start their own business selling art, and all the intricacies involved with owning a business.



Allison Ecklund is a Twin Cities artist, arts advocate, musician and attorney. After graduating from St. Olaf College in Northfield, Minnesota with double majors in art and art history, she pursued a career in law without leaving art behind. She took up plein air landscape painting in 2007 and enjoys applying those techniques to painting horses and other moving figures from direct observation.

May 15, THURSDAY – Lorenzo Chavez Live Demo
New Brighton Community Center room 224, 7pm – 9pm

Lorenzo, our workshop artist, will be giving a live demo of his work and technique. Please note that this is Thursday, not our usual Tuesday meeting day.



STEVE BUDAS
LCPS Program Chair
Minneapolis, Minnesota

Members Meeting

Recap of the November 12 Presentation by Mandy Madsen

After her introduction, Mandy Madsen gave a brief description of her background and experience in the art of framing. She began her presentation by outlining the basic framing process. She noted that when she frames pastel works of art, she never turns the painting upside down in any of her steps involved. Mandy first described the mat and how they are mounted inside the frame itself. The frame must have enough space for the matting and backboard of the painting. The mat can be separated from the glass by spacers. Sometimes the painting is glued directly to the glass, which is called the French style of framing. This technique is used a lot in Museums to minimize the loss of pastel dust over the years. Otherwise, sometimes the bevel is reversed for a pastel painting, so that when dust does fall, it will be caught inside the mat itself. The frame core is placed up against the mat and then held in place by a shim. Not all artists want to use a mat for their paintings. In this case, the spacers are attached to the glass prior to inserting the painting.



It is advisable to do some work on the frame before you begin to place the matted painting into it. So Mandy always places her screw holes 1/3 of the way down from the top of the painting and drills them ahead of time. She will also measure the wire length ahead of time. Once the painting is secured in the frame, she will place the frame onto her brown backing paper, trace it, and cut the paper slightly larger than her sketched frame. Double stick tape is applied directly to the paper, inside the frame sketch lines. She uses acid-free tape. The frame is attached and the paper edges trimmed from the frame. Now the screws go in and the wire strung through the two hooks. There are three types of glass used, regular, museum glass (which is 95% no glare) and a third type, that is only 77% non-glare, but cheaper, just as effective. for the most part, and used by many artists.

Throughout the presentation she answered all questions, with some of the following comments:

- As a practice, she recommends using a mat, though it was noted that the trend today was for people to not place a mat around their large paintings
- The Matt and frame should contrast
- She never frames the painting upside down
- She does have a special glass cutter
- She resorts to Plexiglas once the frame sizes are 40" x 60" or larger

After the formal presentation she gave a demo at the back of the room on how to place the wire and wrap it onto the frame itself properly. Previously cut 8" x 10" double mat were available for anyone who wanted them. Sample mat, spacers, tools and frame corners were accessible to view and experiment with in the back of the room as well.

--

STEVE BUDAS

LCPS Program Chair

Minneapolis, Minnesota

LORENZO CHAVEZ WORKSHOP

May 14, 15 & 16, 2025

“It is the simple glimpses into nature that move me to create.”

~Lorenzo Chavez

The Lake Country Pastel Society is excited to host internationally known award-winning painter, Lorenzo Chavez for our Spring 2025 workshop! It will be an in-studio workshop on May 14-16 at the New Brighton Community Center, New Brighton, MN.



Chavez is a renowned fine artist specializing in pastel and oil landscapes. He is also a sought-after instructor who teaches workshops across the United States.

Born and raised in New Mexico, Lorenzo Chavez has been a professional artist for over 35 years. His first inspirations and foundations as a young artist were formed by the local landscape and the art history of the area. Lorenzo now makes his home in Parker, Colorado and uses his location as a base to travel and paint throughout the region and across the country.

His award-winning work is featured in prestigious exhibitions, galleries and publications, as well as private and corporate collections throughout the US and internationally. He has been a recipient of awards from notable groups as the Pastel Society of America, California Art Club, and the American Impressionist Society and is an active member of Rendezvous of Art, Signature member of The Plein Air Painters of America and the Pastel Society of America, the California Art Club Signature Member, American Impressionist Society, and the Pastel Society of Spain.

Lorenzo's workshop will focus on the fundamentals of landscape painting... shape, line, values, colors, edges, emotional involvement, and atmospheric and linear perspective. The importance of simplifying the landscape and composition will be emphasized. His workshops offer lots of individual attention with daily demos and an opportunity for relaxed and inspiring group discussions. His goal is to “awaken your artistic vision.”



Below is the registration form.

Becky Jokela and Gwen Solberg

LCPS Workshop Co-chairs [bjokela\(at\)gmail.com](mailto:bjokela(at)gmail.com)

Initial Registration Form

LORENZO CHAVEZ WORKSHOP – LAKE COUNTRY PASTEL SOCIETY – MAY 14, 15 & 16, 2025

Name: _____

Address: _____

Cell Phone: _____ Other: _____

E-mail: _____

Amount enclosed: _____ \$100 Down Payment OR
_____ \$465 Full Payment (\$505 non-members)

Make check payable to **LAKE COUNTRY PASTEL SOCIETY** or **LCPS** and mail to:

Gwen Solberg, LCPS Workshop
1033 Tamarack Lane
Lino Lakes, MN 55014



LORENZO CHAVEZ WORKSHOP – LAKE COUNTRY PASTEL SOCIETY – MAY 14, 15 & 16, 2025

*Return this portion with balance by **APRIL 10, 2025***

Name: _____

Address: _____

Cell Phone: _____ Other: _____

E-mail: _____

Amount enclosed: _____ \$365 due if initial payment was \$100 (\$405 non-members)

Make check payable to **LAKE COUNTRY PASTEL SOCIETY** or **LCPS** and mail by **04/10/2025** to:

Gwen Solberg, LCPS Workshop
1033 Tamarack Lane
Lino Lakes, MN 55014

MEMBERSHIP RENEWAL TIME

It's time to renew your membership with the Lake Country Pastel Society.

Membership runs from January 1-December 31. Renew before March 31 to avoid missing any benefits!

Membership fee is \$35/year.

Find the Membership form on the Contact section of <https://lakecountrypastelsociety.org/contact.php> to renew or join! Renew now!

There are MANY wonderful benefits to membership, here are just a few:

LCPS hosts artist workshops, 6 meeting/year, 6 fun filled newsletters, 6 art challenges, opportunities to exhibit.

MEMBER MEETINGS

Paint-in event, paint-out event and at least four meetings featuring amazing guest speakers, demonstrations, hands-on learning experiences, and a chance to enjoy the company of other pastel artists.

NEWSLETTER

Keep up to date through the bi-monthly newsletter filled with announcements, meeting recaps, articles, and member news. This newsletter is a fantastic opportunity for you to share what's happening in your art world with other members as well.

MEMBER ART GALLERY

Each member can display their work in our rotating gallery located on our group's website.

VOLUNTEER OPPORTUNITIES

We have openings for several board positions as well as help with committees and events.

MAKE CONNECTIONS

Our members enjoy time spent together sharing their love of pastels. Meetings are filled with laughter, idea-sharing, and support.

IAPS MEMBERSHIP

You are automatically a member of IAPS with your active LCPS membership and are able to enter their shows and exhibitions.

Membership Questions? Contact Michelle Wegler [michelle.wegler\(at\)gmail.com](mailto:michelle.wegler(at)gmail.com).

Tucson Pastel Society

TPS is having an International online Show. The time to enter is now at [ShowSubmit.com](https://www.showsubmit.com) starting today, until January 15th. You can enter up to 3 pieces for \$45. So, with that being said, I would encourage all or any of the LCPS members to enter their best work.....time to get the creative juices flowing. Remember it is an online show, so no shipping costs unless of course you sell a painting!

We are working with sponsors with an anticipated \$3000 worth of awards. This ad will have sponsor logos at the bottom as they respond.

The Juror of Acceptance is Nanci King-Mertz. The Juror of Awards is Liz Haywood-Sullivan

Looking forward to some of the members willing to participate!

Becky Neideffer

President, Tucson Pastel Society

bneidefferart@gmail.com




Tucson Pastel Society
Power of Pastel



Power of Pastel by Ellen Chubb

Annual International Show
February 3 - May 1, 2025 | Online
Entry Deadline: January 15, 2025
ShowSubmit.com



City Pastel Collective

There is a group of city artists who have formed a collective for increased potential for exhibiting their work. They call themselves the City Pastel Collective. Luckily for them, almost immediately they were invited to exhibit their work at the Northfield Arts Guild in downtown Northfield. The exhibit is up now and through the month of February, with an opening reception Friday evening, February 7, from 6 – 8 pm. They occupy the upper showroom, while the reception will also include the artists exhibiting in their lower gallery. The artists participating are Susan Warner, Varijita Singh, Nancy Punderson Parr, Steve Budas, Alitta Boechler and Patricia Sorenson.



Janice Johnson

The Grand Marais Art Colony has accepted my proposal for a self-guided residency in April 2025. Inspired by Lyn Asselta's workshop last fall, I will experiment with value and color to evoke various moods in my paintings.



Hiding Place

Rene Ellis

I have good news and tough news. I have not been able to be at meetings because I can no longer drive, and the newsletter is nice to see. I was diagnosed as having dementia.

The good thing is that I can still paint.

My plan is to paint and do any sort of art every day whether it is good or not. I would like to find some one that could pick me up at the Northern Warehouse. I'm really missing you all. I wish you all a merry Christmas!!

Linda Adams

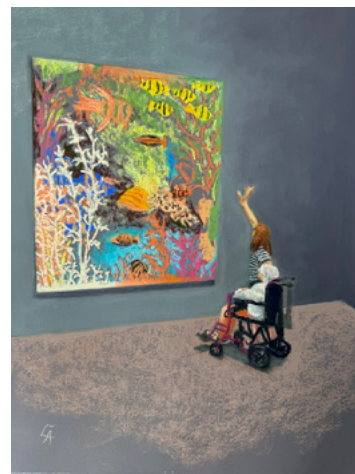
This is my painting that was juried into the [Arts North International exhibition at the Hopkins Center for the Arts](#). The opening reception is January 11, 2025 from 4-6 pm.

The painting is titled

“Art Speaks to All Ages”

It is soft pastel on sanded paper.

Short videos of the participating artists will be posted to their website.



I also have 6 paintings displayed at the Westonka Performing Arts Center thru March.

Lisa Stauffer

Come and join us for a fun class covering the painting principles and color and its properties in depth. Click on the title to go to the class info or find the class online at whitebeararts.org

I look forward to seeing you there!

[Artistic Essentials: Still Life in Pastel](#)

Paint simple still life set-ups in the versatile medium of pastel and learn to apply these lessons to all subject matter. Discuss design, composition, painting fundamentals, and the importance of accurate drawing. Benefit from demonstrations, personal assistance, group critiques, and have fun! Intermediate to advanced artists of other media are welcome, though demonstrations will be done in pastel.

Instructor: [Lisa Stauffer](#)

[Supply List](#)

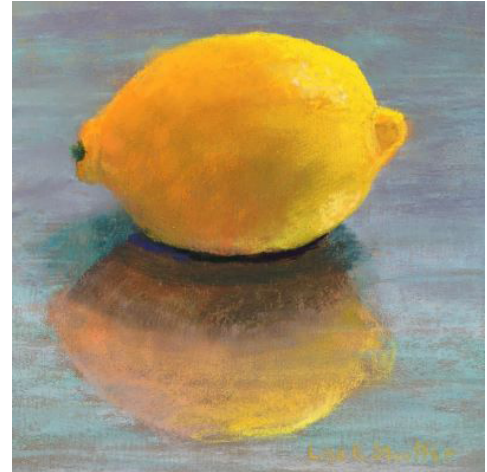
Friday-Sunday, Feb 14-16

9:30 AM-4:00 PM

ID: P1L8

\$237 Member/\$296 Non-Member

Adults, beginner and beyond



Wendy Peterson

I have two classes in White Bear Center of the Arts

[Pastel Painting Basics](#)

Learn the basic stages of a pastel painting. Discover how starting with a strong foundation makes for a more enjoyable and creative painting process. Learn to pick your palette to create color harmony, how to use underpainting as a roadmap, and the process of laying down marks, and applying pastel in stages.

2 Thursdays, Jan 23 & 30

9:30 AM-12:30 PM

ID: P2L5

\$81 Member/\$102 Non-Member

Adults, teens 12+, all levels

[Intro to Pastels](#)

In addition to their enduring beauty (Degas was a fan!), pastels are a great way to fit art into your busy lifestyle. They are portable and dry, which means minimal cleanup and no dry time, so you can start and stop at any time. Because you hold the sticks in your hand, there is more control than using a brush, and you can learn about color theory without needing to know how to mix paint colors. This class is to introduce you to the pastel medium and materials, then you will have an opportunity to apply some basic mark-making techniques.

Purchase a supply kit for \$20 or bring your own supplies from the supply list

Tuesday, Feb 4, 10:00 AM-12:00 PM

ID: P2L3

\$44 Member/\$55 Non-Member

Adults, teens 12+, all levels

Board of Directors

President

Wendy Peterson

Vice President

OPEN

Treasurer

Susan Warner

Secretary

Nancy Dahlof

Program Chair

Steve Budas

Exhibit Chair

OPEN

Workshops

Becky Jokela

Public Relations

OPEN

Mentoring Program

Eileen France

Membership Chair

Michelle Wegler

Historian and

Newsletter Chair

Dian Dewi

Past co-Presidents

Christine Tierney

Pat Duncan

Lake Country Pastel Society 2025 Calendar

January 2025

1- Newsletter

4- Member meeting - Paint in event at New Brighton Community Center

7- Board Member meeting 5.30PM-7PM - Zoom

18- Exhibition - Pick up artwork - 10.30AM-2.30PM - The St Paul Monastery

March 2025

1 - Newsletter

4 - Board Meeting - 5:30-7:00 - ZOOM

11 - Member Meeting - Allison Ecklund on "How to Start Your Own Art Business"

May 2025

1 - newsletter

6 - Board member - 5.30PM-7PM - Zoom

15 - Chavez Demo

July 2025

1 - Board member - 5.30PM-7PM - Zoom

8 - Paint Out.



New Brighton Community Center
400 10th Street NW
New Brighton, MN 55112

In case of bad weather

LCPS will email members by noon the day of the meeting and will contact people who don't have email.

If you have questions, contact Wendy Peterson

